

## SPM010P

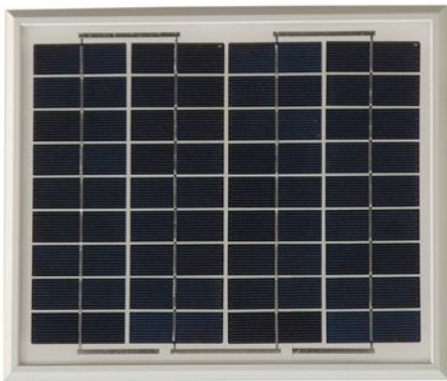
### FEATURE:

- IEC61215, TUV certification
- UL 1703 certification
- Using high efficiency 6" Multicrystalline cells.
- Using low iron tempered glass and an EVA pottant with PET back sheet to encapsulated cells.
- Anodized aluminum frame protected structural strength.
- 10 years limited warranty of 90% power output and 25 years limited warranty of 80% power output.



### High-efficiency, High-Quality Multicrystalline Photovoltaic Module

ASUN Energy manufactures clean, elegant and durable modules with advanced industry-leading performance for different electrical power requirements. It is designed and built to deliver highest efficiency and reliable power for on-grid residential and commercial systems worldwide.



ASUN 10Watt panels could applied in Electrification of villages in remote areas, power source for summer vacation homes, water quality and environmental data monitoring systems, Emergency communication systems, Microwave/radio repeater stations railroad signals, etc.



Asun Energy Co.,Ltd.  
No.1536 Yunli Road,Song Lin Town,  
Wu Jiang City,Jiang Su 215200  
Tel: 86-512-63132813  
Fax: 86-512-63132900  
[www.asunenergy.com.cn](http://www.asunenergy.com.cn)

ELECTRICAL CHARACTERISTICS			
	SPM010P	SPM08P	
Power at STC(P <sub>m</sub> )	10W	8W	
Maximum power voltage(V <sub>pm</sub> )	17.3V	17.1V	
Maximum power current(I <sub>pm</sub> )	0.59A	0.46A	
Open circuit voltage(V <sub>oc</sub> )	21.8V	21.0V	
Short circuit current(I <sub>sc</sub> )	0.64A	0.61A	
Tolerance	±5%	±5%	
Module efficiency	8.76%	7.1%	
Maximum system voltage	1000V DC		
Standard test conditions	Temperature 25°C, Irradiance 1000W/m <sup>2</sup> , AM=1.5		
Temperature coefficient	I <sub>sc</sub> :0.05%/K	V <sub>oc</sub> :-0.36%/K	P <sub>max</sub> :-0.46%/K

Specifications	
Cell	Multicrystalline silicon solar cell, (78mmx26mm)
No. of cell and connection	36 (4x9)
Dimension	368mm (14.5in) x310mm(12.2in)x18mm(0.7in)
Weight	1.6KG

AMBIENT CONDITIONS	
Operating Temperature	-40°C to +85°C
Storage Humidity	<90%

OUT PUT	
Type of output terminal	Junction box
Cable	Length 3000mm

### IV CURVES

