

## KL90W-36 M Series

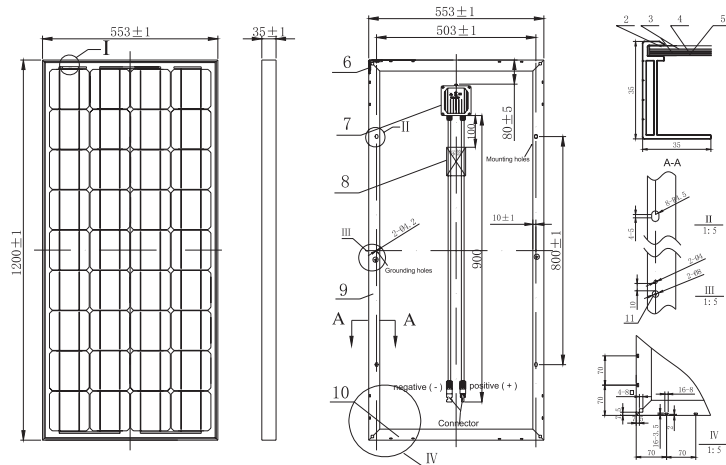


### SERIES:

KL85W-36M    KL90W-36M  
KL95W-36M    KL100W-36M

### Features

- High module conversion efficiency, through superior manufacturing technology
- Low tolerance of +/-3% (optional)
- Withstand extreme wind-pressure, snow loads and extreme temperatures Passed IEC 5400 Pa mechanical loading test
- Aluminum alloy plated with oxidation film improving corrosion resistance
- Anti-reflective highly transparent, low iron tempered glass



### Benefits

- 25-year liner performance warranty; 10-year warranty on materials and workmanship
- All the products are covered by the Product Quality Guarantee Insurance Policy issued by China Pacific Property Insurance Co., Ltd.
- ISO 9001:2008, ISO 14001:2004 certified factory, IEC61215, IEC61730 certified products

SPECIFICATIONS				
Module Type	KL85W-36 M	KL90W-36 M	KL95W-36 M	KL100W-36 M
Peak power Pm(W)	85Wp	90Wp	95Wp	100Wp
Open circuit voltage Voc(V)	22.0	22.6	23.2	23.2
Max. power voltage Vmp(V)	18.0	18.5	19.0	19.0
Max. power current Imp(A)	4.72	4.86	5.00	5.26
Short circuit current Isc(A)	5.10	5.25	5.40	5.68
Module Efficiency(%)	12.81	13.56	14.32	15.07
Operating Temperature(°C)	-40°C~+85°C			
Maximum system voltage	1000V (IEC) DC			
Maximum series fuse rating	10A			
Power tolerance	±3% (optional)			
Nominal operating cell temperature (NOCT)	45±2°C			
Temperature Coefficient of Pmax	-0.45 %/°C			
Temperature Coefficient of Voc	-0.34 %/°C			
Temperature Coefficient of Isc	0.050 %/°C			
STC :	Irradiance:1000W/m <sup>2</sup> , Cell temperature:25°C, AM:1.5			

Packaging Configuration
2pcs/ctn, 100pcs/pallet, 1400 pcs/40'ft Container

Mechanical Characteristics	
Cell Type	Mono-crystalline 125×125mm (5 inch)
No. of cells	36 (4×9)
Dimensions	1200×553×35mm
Weight	10kg
Front Glass	3.2mm, High Transmission, Low Iron, Tempered Glass
Frame	Anodized Aluminium Alloy
Junction Box	IP65 Rated

