

KL190W-72M series



SERIES:

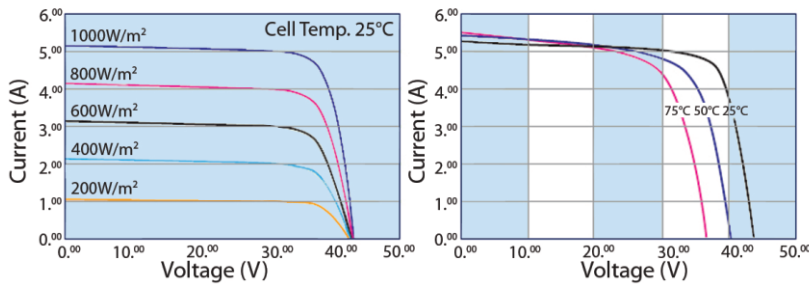
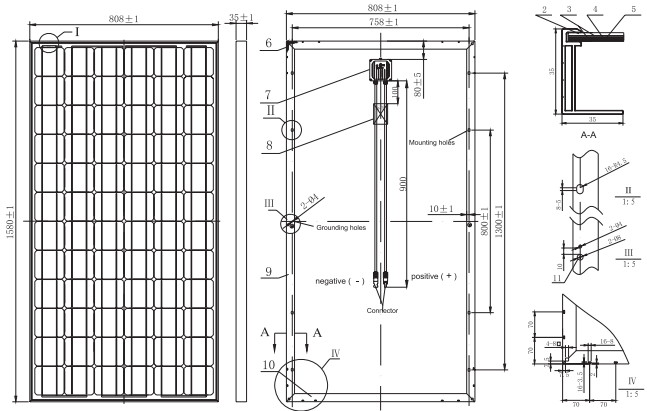
KL170W-72M KL175W-72M
 KL180W-72M KL185W-72M
 KL190W-72M KL195W-72M
 KL200W-72M KL205W-72M

Features

- High module conversion efficiency, through superior manufacturing technology
- Low tolerance of +/-3% (optional)
- Withstand extreme wind-pressure, snow loads and extreme temperatures Passed IEC 5400 Pa mechanical loading test
- Aluminum alloy plated with oxidation film improving corrosion resistance
- Anti-reflective highly transparent, low iron tempered glass

Benefits

- 25-year liner performance warranty; 10-year warranty on materials and workmanship
- All the products are covered by the Product Quality Guarantee Insurance Policy issued by China Pacific Property Insurance Co., Ltd.
- ISO 9001:2008, ISO 14001:2004 certified factory, IEC61215, IEC61730 certified Products



Packaging Configuration

2pcs/ctn, 50 pcs/pallet, 728 pcs/40'ft Container

Mechanical Characteristics

Cell Type	Mono-crystalline 125×125mm (5 inch)
No. of cells	72 (6×12)
Dimensions	1580×808×35mm
Weight	10kg
Front Glass	3.2mm, High Transmission, Low Iron, Tempered Glass
Frame	Anodized Aluminium Alloy
Junction Box	IP65 Rated
Output Cables	TüV 1×4.0mm / UL12AWG, Length:900mm

SPECIFICATIONS

Module Type	KL170W-72 M	KL175W-72 M	KL180W-72 M	KL185W-72 M	KL190W-72 M	KL195W-72 M	KL200W-72 M	KL205W-72 M
Peak power Pm(W)	170Wp	175Wp	180Wp	185Wp	190Wp	195Wp	200Wp	205Wp
Open circuit voltage Voc(V)	43.3	43.3	43.9	43.9	44.5	44.5	44.5	44.9
Max. power voltage Vmp(V)	35.5	35.5	36.0	36.0	36.5	36.5	36.5	36.8
Max. power current Imp(A)	4.79	4.93	5.00	5.14	5.21	5.34	5.48	5.57
Short circuit current Isc(A)	5.08	5.23	5.30	5.45	5.52	5.77	5.92	5.90
Module Efficiency(%)	13.32	13.71	14.10	14.49	14.88	15.27	15.67	16.06
Operating Temperature(°C)	-40°C~+85°C							
Maximum system voltage	1000V (IEC) DC							
Maximum series fuse rating	10A							
Power tolerance	±3% (optional)							
Nominal operating cell temperature (NOCT)	45±2°C							
Temperature Coefficient of Pmax	-0.45 %/°C							
Temperature Coefficient of Voc	-0.34 %/°C							
Temperature Coefficient of Isc	0.050 %/°C							

STC : Irradiance:1000W/m², Cell temperature:25°C, AM:1.5