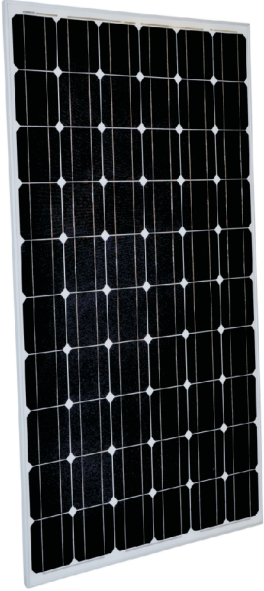


KL235W-60M series



SERIES:

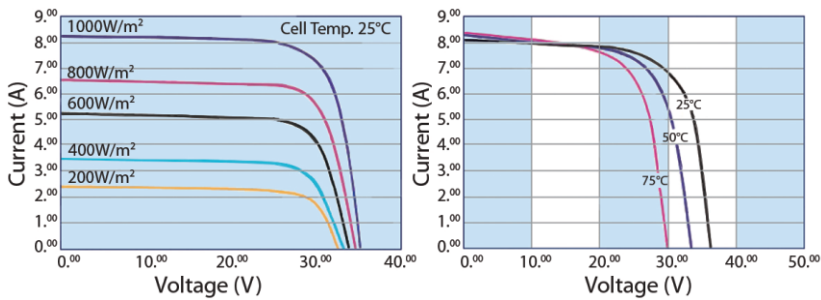
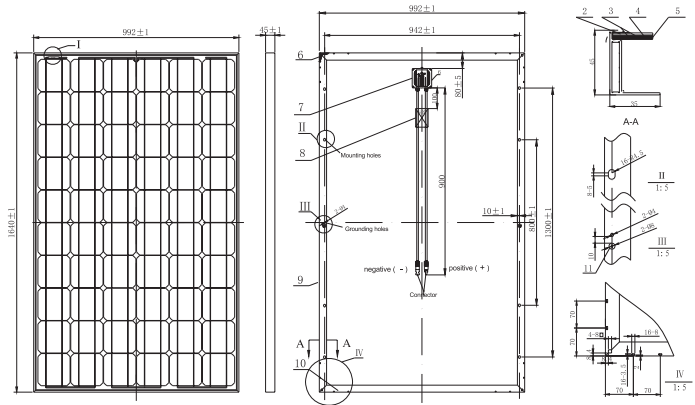
KL215W-60M KL220W-60M
KL225W-60M KL230W-60M
KL235W-60M KL240W-60M
KL245W-60M KL250W-60M
KL255W-60M KL260W-60M

Features

- High module conversion efficiency, through superior manufacturing technology
- Low tolerance of +/-3% (optional)
- Withstand extreme wind-pressure, snow loads and extreme temperatures Passed IEC 5400 Pa mechanical loading test
- Aluminum alloy plated with oxidation film improving corrosion resistance
- Anti-reflective highly transparent, low iron tempered glass

Benefits

- 25-year liner performance warranty; 10-year warranty on materials and workmanship
- All the products are covered by the Product Quality Guarantee Insurance Policy issued by China Pacific Property Insurance Co.,Ltd.
- ISO 9001:2008, ISO 14001:2004 certified factory, IEC61215, IEC61730 certified Products



Packaging Configuration

2pcs/ctn, 44 pcs/pallet, 572 pcs/40'ft Container

Mechanical Characteristics

Cell Type	Mono-crystalline 156x156mm (6 inch)
No. of cells	60 (6x10)
Dimensions	1640x992x45mm
Weight	19.5kg
Front Glass	3.2mm, High Transmission, Low Iron, Tempered Glass
Frame	Anodized Aluminum Alloy
Junction Box	IP65 Rated
Output Cables	TUV 1x4.0mm / UL12AWG, Length:900mm

SPECIFICATIONS

Module Type	KL215W-60M	KL220W-60M	KL225W-60M	KL230W-60M	KL235W-60M	KL240W-60M	KL245W-60M	KL250W-60M	KL255W-60M	KL260W-60M
Peak power Pm(W)	215Wp	220Wp	225Wp	230Wp	235Wp	240Wp	245Wp	250Wp	255Wp	260Wp
Open circuit voltage Voc(V)	36.2	36.2	36.8	36.8	37.4	37.4	37.4	38.1	38.1	38.1
Max. power voltage Vmp(V)	29.2	29.2	29.7	29.7	30.2	30.2	30.2	30.7	30.7	30.7
Max. power current Imp(A)	7.36	7.53	7.58	7.74	7.78	7.94	8.11	8.14	8.31	8.47
Short circuit current Isc(A)	7.95	8.11	8.18	8.35	8.4	8.58	8.76	8.80	8.79	9.14
Module Efficiency(%)	13.22	13.52	13.83	14.14	14.44	14.75	15.06	15.37	15.67	15.98
Operating Temperature(°C)	-40°C~+85°C									
Maximum system voltage	1000V (IEC) DC									
Maximum series fuse rating	15A									
Power tolerance	±3% (optional)									
Nominal operating cell temperature (NOCT)	45±2°C									
Temperature Coefficient of Pmax	-0.45 %/°C									
Temperature Coefficient of Voc	-0.34 %/°C									
Temperature Coefficient of Isc	0.050 %/°C									

STC : Irradiance:1000W/m², Cell temperature:25°C, AM:1.5