

KL230W-60P series



SERIES:

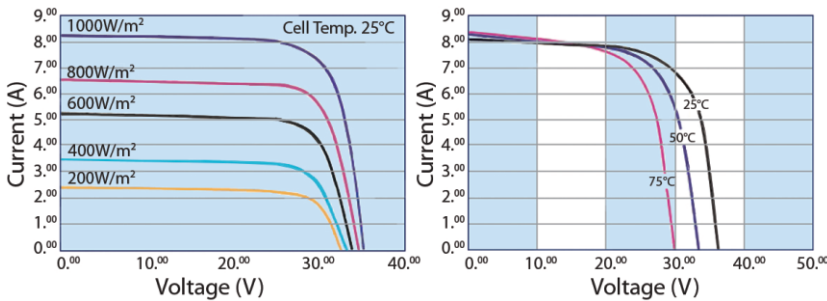
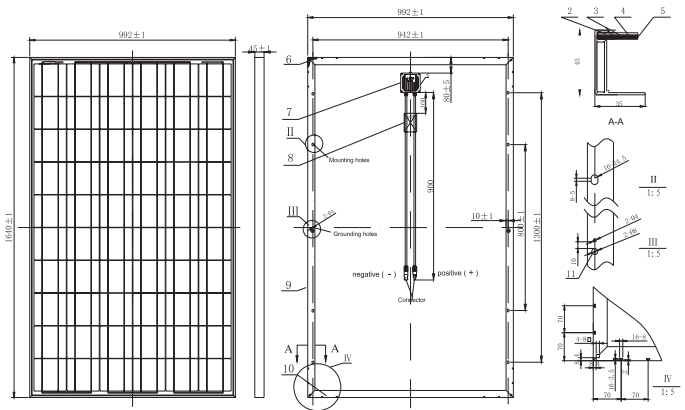
KL210W-60P KL215W-60P
 KL220W-60P KL225W-60P
 KL230W-60P KL235W-60P
 KL240W-60P KL245W-60P
 KL250W-60P KL255W-60P

Benefits

- 25-year liner performance warranty; 10-year warranty on materials and workmanship
- All the products are covered by the Product Quality Guarantee Insurance Policy issued by China Pacific Property Insurance Co., Ltd.
- ISO 9001:2008, ISO 14001:2004 certified factory, IEC61215, IEC61730 certified Products

Features

- High module conversion efficiency, through superior manufacturing technology
- Low tolerance of +/-3% (optional)
- Withstand extreme wind-pressure, snow loads and extreme temperatures Passed IEC 5400 Pa mechanical loading test
- Aluminum alloy plated with oxidation film improving corrosion resistance
- Anti-reflective highly transparent, low iron tempered glass



Packaging Configuration

2pcs/ctn, 44 pcs/pallet, 572 pcs/40'ft Container

Mechanical Characteristics

Cell Type	Poly-crystalline 156×156mm (6 inch)
No. of cells	60 (6×10)
Dimensions	1640×992×45mm
Weight	19.5kg
Front Glass	3.2mm, High Transmission, Low Iron, Tempered Glass
Frame	Anodized Aluminum Alloy
Junction Box	IP65 Rated
Output Cables	TüV 1×4.0mm / UL12AWG, Length:900mm

SPECIFICATIONS

Module Type	KL210W-60P	KL215W-60P	KL220W-60P	KL225W-60P	KL230W-60P	KL235W-60P	KL240W-60P	KL245W-60P	KL250W-60P	KL255W-60P
Peak power Pm(W)	210Wp	215Wp	220Wp	225Wp	230Wp	235Wp	240Wp	245Wp	250Wp	255Wp
Open circuit voltage Voc(V)	36.0	36.0	36.0	36.6	36.6	37.2	37.2	37.2	37.8	37.8
Max. power voltage Vmp(V)	29.0	29.0	29.0	29.5	29.5	30.0	30.0	30.0	30.5	30.5
Max. power current Imp(A)	7.24	7.41	7.59	7.63	7.80	7.83	8.00	8.17	8.20	8.36
Short circuit current Isc(A)	7.82	8.01	8.19	8.24	8.42	8.46	8.65	8.74	8.85	9.02
Module Efficiency(%)	12.91	13.22	13.52	13.83	14.14	14.44	14.75	15.06	15.37	15.67
Operating Temperature(°C)	-40°C~+85°C									
Maximum system voltage	1000V (IEC) DC									
Maximum series fuse rating	15A									
Power tolerance	±3% (optional)									
Nominal operating cell temperature (NOCT)	45±2°C									
Temperature Coefficient of Pmax	-0.45 %/°C									
Temperature Coefficient of Voc	-0.34 %/°C									
Temperature Coefficient of Isc	0.050 %/°C									

STC : Irradiance:1000W/m², Cell temperature:25°C, AM:1.5