

KL280W-72P series



SERIES:

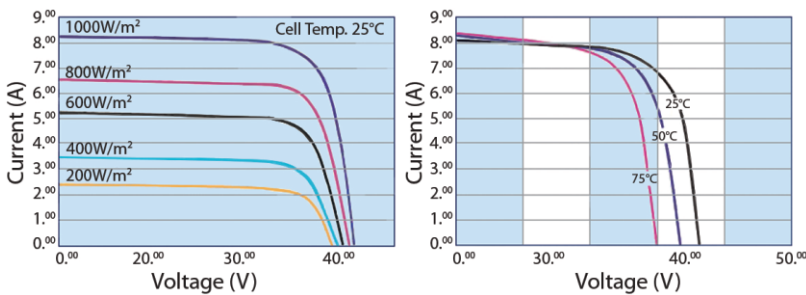
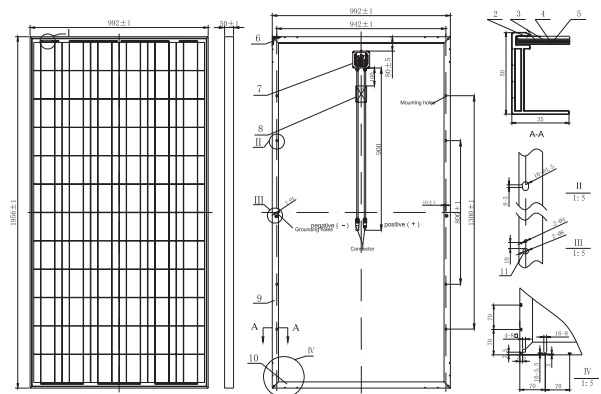
KL255W-72P KL260W-72P
KL265W-72P KL270W-72P
KL275W-72P KL280W-72P
KL285W-72P KL290W-72P
KL295W-72P KL300W-72P
KL305W-72P

Features

- High module conversion efficiency, through superior manufacturing technology
- Low tolerance of +/-3% (optional)
- Withstand extreme wind-pressure, snow loads and extreme temperatures Passed IEC 5400 Pa mechanical loading test
- Aluminum alloy plated with oxidation film improving corrosion resistance
- Anti-reflective highly transparent, low iron tempered glass

Benefits

- 25-year liner performance warranty; 10-year warranty on materials and workmanship
- All the products are covered by the Product Quality Guarantee Insurance Policy issued by China Pacific Property Insurance Co.,Ltd.
- ISO 9001:2008, ISO 14001:2004 certified factory, IEC61215, IEC61730 certified Products



Packaging Configuration

2pcs/ctn, 38 pcs/pallet, 418 pcs/40'ft Container

Mechanical Characteristics

Cell Type	Poly-crystalline 156×156mm (6 inch)
No.of cells	72 (6×12)
Dimensions	1956×992×50mm
Weight	22.5kg
Front Glass	3.2mm, High Transmission, Low Iron, Tempered Glass
Frame	Anodized Aluminium Alloy
Junction Box	IP65 Rated
Output Cables	TüV 1×4.0mm / UL12AWG, Length:900mm

SPECIFICATIONS

Module Type	KL255W-72P	KL260W-72P	KL265W-72P	KL270W-72P	KL275W-72P	KL280W-72P	KL285W-72P	KL290W-72P	KL295W-72P	KL300W-72P	KL305W-72P
Peak power Pm(W)	255Wp	260Wp	265Wp	270Wp	275Wp	280Wp	285Wp	290Wp	295Wp	300Wp	305Wp
Open circuit voltage Voc(V)	43.4	43.4	44.0	44.0	44.0	44.6	44.6	44.6	45.3	45.3	45.3
Max. power voltage Vmp(V)	35.0	35.0	35.5	35.5	35.5	36.0	36.0	36.0	36.5	36.5	36.5
Max. power current Imp(A)	7.29	7.43	7.46	7.61	7.75	7.78	7.92	8.05	8.08	8.22	8.36
Short circuit current Isc(A)	7.87	7.95	8.06	8.14	8.30	8.40	8.55	8.61	8.72	8.79	8.94
Module Efficiency(%)	13.14	13.40	13.66	13.92	14.17	14.43	14.69	14.95	15.20	15.46	15.72
Operating Temperature(°C)	-40°C~+85°C										
Maximum system voltage	1000V (IEC) DC										
Maximum series fuse rating	15A										
Power tolerance	±3% (optional)										
Nominal operating cell temperature (NOCT)	45±2°C										
Temperature Coefficient of Pmax	-0.45 %/°C										
Temperature Coefficient of Voc	-0.34 %/°C										
Temperature Coefficient of Isc	0.050 %/°C										

STC : Irradiance:1000W/m², Cell temperature:25°C, AM:1.5