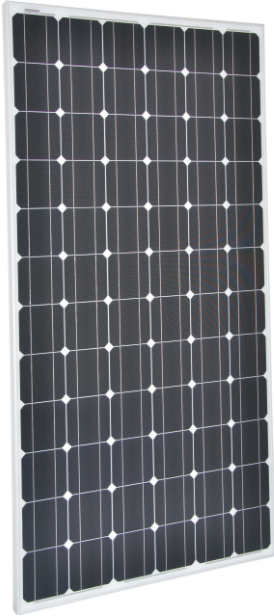


KL285W-72M series



SERIES:

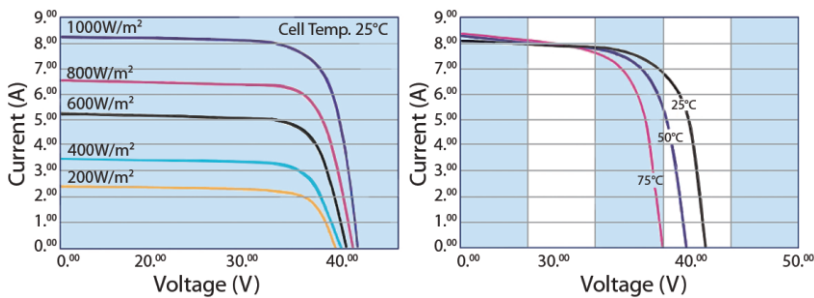
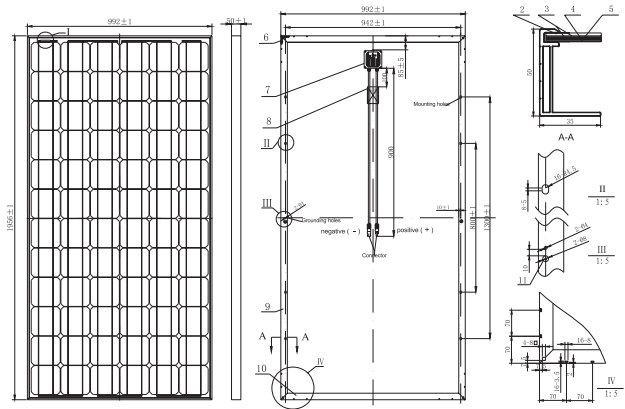
KL260W-72M	KL265W-72M
KL270W-72M	KL275W-72M
KL280W-72M	KL285W-72M
KL290W-72M	KL295W-72M
KL300W-72M	KL305W-72M
KL310W-72M	

Features

- High module conversion efficiency, through superior manufacturing technology
- Low tolerance of +/-3% (optional)
- Withstand extreme wind-pressure, snow loads and extreme temperatures Passed IEC 5400 Pa mechanical loading test
- Aluminum alloy plated with oxidation film improving corrosion resistance
- Anti-reflective highly transparent, low iron tempered glass

Benefits

- 25-year liner performance warranty; 10-year warranty on materials and workmanship
- All the products are covered by the Product Quality Guarantee Insurance Policy issued by China Pacific Property Insurance Co.,Ltd.
- ISO 9001:2008, ISO 14001:2004 certified factory, IEC61215, IEC61730 certified Products



Packaging Configuration

2pcs/ctn, 38 pcs/pallet, 418 pcs/40'ft Container

Mechanical Characteristics

Cell Type	Mono-crystalline 156×156mm (6 inch)
No.of cells	72 (6×12)
Dimensions	1956×992×50mm
Weight	22.5kg
Front Glass	3.2mm, High Transmission, Low Iron, Tempered Glass
Frame	Anodized Aluminium Alloy
Junction Box	IP65 Rated
Output Cables	TüV 1×4.0mm / UL12AWG, Length:900mm

SPECIFICATIONS

Module Type	KL260W-72M	KL265W-72M	KL270W-72M	KL275W-72M	KL280W-72M	KL285W-72M	KL290W-72M	KL295W-72M	KL300W-72M	KL305W-72M	KL310W-72M
Peak power Pm(W)	260Wp	265Wp	270Wp	275Wp	280Wp	285Wp	290Wp	295Wp	300Wp	305Wp	310Wp
Open circuit voltage Voc(V)	43.6	44.3	44.3	44.3	44.9	44.9	44.9	45.5	45.5	45.5	46.1
Max. power voltage Vmp(V)	35.2	35.7	35.7	35.7	36.2	36.2	36.2	36.7	36.7	36.7	37.2
Max. power current Imp(A)	7.38	7.42	7.56	7.70	7.73	7.87	8.01	8.04	8.17	8.31	8.33
Short circuit current Isc(A)	7.95	8.02	8.16	8.31	8.34	8.50	8.65	8.68	8.83	8.98	9.00
Module Efficiency(%)	13.40	13.66	13.92	14.17	14.43	14.69	14.95	15.20	15.46	15.72	15.98
Operating Temperature(°C)	-40°C~+85°C										
Maximum system voltage	1000V (IEC) DC										
Maximum series fuse rating	15A										
Power tolerance	±3% (optional)										
Nominal operating cell temperature (NOCT)	45±2°C										
Temperature Coefficient of Pmax	-0.45 %/°C										
Temperature Coefficient of Voc	-0.34 %/°C										
Temperature Coefficient of Isc	0.050 %/°C										

STC :

Irradiance:1000W/m², Cell temperature:25°C, AM:1.5