

Mechanical and Packing Configuration

Mono Solar Cell (mm)	125*125
Number of Cell (pcs)	6*12
Dimensions (mm)	1580*808*40
Front Glass Thickness (mm)	3.2
Weight (kg)	15
Packing Configuration	Wood
Quantity(pcs)/Pallet	27
20ft Loading Capacity(pcs)	365
40ft Loading Capacity(pcs)	810

Electrical Characteristics

Type Model	NE180-36M	NE185-36M	NE190-36M	NE195-36M
Peak Power Watt-Pmax (WP)	180	185	190	195
Cell Efficiency (%)	16.96	17.50	17.75	18.23
Maximum Power Voltage-Vmp (V)	36.30	36.30	36.30	36.30
Maximum Power Current-Imp (A)	4.95	5.09	5.09	5.37
Open Circuit Voltage-Voc (V)	44.60	44.60	44.60	44.60
Short Circuit Current-Isc (A)	5.61	5.80	5.80	6.06
Power Output Tolerance (%)	+/-3			
Maximum System Voltage (VDC)	1000			
Operating Temperature (°C)	-40~+85			
Surface Maximum Load Capacity (Pa)	2400			
Allowable Hail Load (m/s,g)	23, 7.53			

STC: Air Mass AM1.5, Irradiance 1000W/m², Cell Temperature 25°C

Temperature Ratings

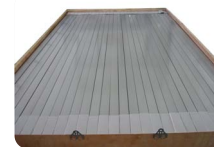
Nominal Operating Cell Temperature (°C)	47±2
Temperature Coefficients of Isc (%/°C)	0.042
Temperature Coefficients of Voc (%/°C)	-0.336
Temperature Coefficients of Pm (%/°C)	-0.47



High Quality Controller

Warranty

5 years manufacturing warranty
 10 years warranty, 90% power output
 25 years warranty, 80% power output



Excellent Products

NESOL LIMITED

www.ne-sol.com

Room211,2F,Block505,Zhenxing Road Futian District, Shenzhen, China

Tel: +86 (0)755 8325 3685 Fax: +86 (0)755 8320 2410 Email: director@ne-sol.com