

UPV SOLAR

U5 185/180/175/170 Module

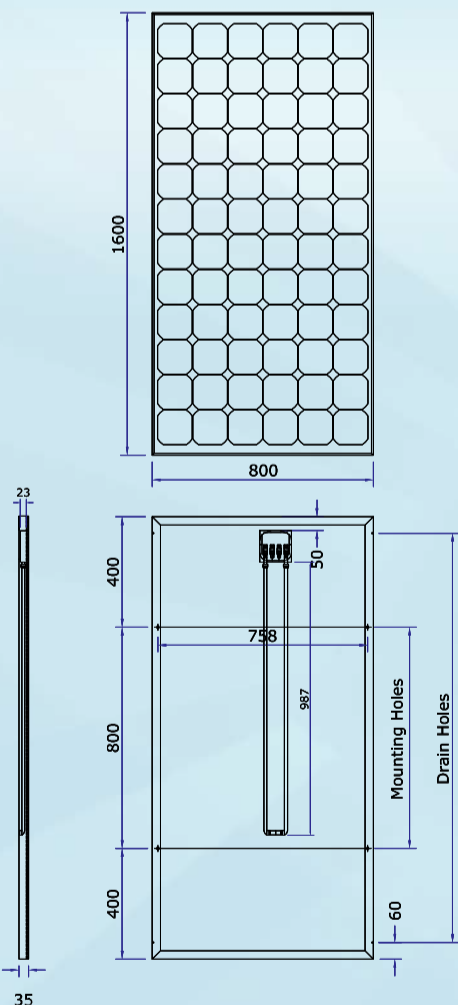


FEATURES

- Each solar cell in a module is selected for optimum performance in low intensity
- Solar cell used in the module is selected for maximum Energy delivery.
- The cells are encapsulated with EVA and PVF back sheet sourced from European manufacturers.
- Specially designed aluminum profile is adopted for the frame
- Appropriate mounting and drain holes on the frame ensure stability during the panel's lifetime in most climate regions
- Bypass diodes minimize power drop during partial shading.
- Cells and modules are produced in ISO 9001:2000 quality system certified plant.

www.upvsolar.in

Solar Module U5 185/180/175/170



Solar Module U5 185 / 180 / 175 / 170

Electrical Parameters

Solar Module	U5 185	U5 180	U5 175	U5 170
Maximum power rating Pmax [Wp]	185	180	175	170
Rated current Imp [A]	5.12	5	4.9	4.77
Rated voltage Vmpp [V]	36.1	36	35.71	35.65
Short circuit current I [A]	5.88	5.76	5.6	5.42
Open circuit voltage Voc [V]	43.98	43.96	43.75	43.5
Cell Efficiency	17.30%	16.80%	16.40%	15.90%
Module Efficiency	14.45%	14.06%	13.67%	13.28%
Tolerance	±5%	±5%	±5%	±5%
Module Outer Dimension	1600 * 800 * 35			
Weight in Kg	15.44			
Cell Specifications	125 mm Psq Mono Cells			
Warranty - Limited Peak Power	1 To 10 Years - 90% 11 To 20 Years - 80%			

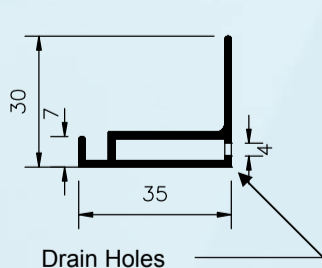
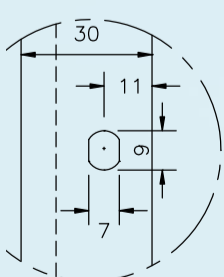
Guaranty	Limited Product Guarantee - 1 Year
Number of cells	72
Diode	Bye-pass diode(for every 24cells)

Thermal parameters

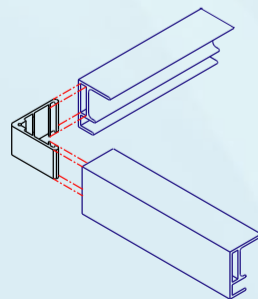
NOCT [°C]	45±2
Temp. Coefficient: short-circuit current [A]	+0.065%/°C
Temp. Coefficient: open-circuit voltage [V]	-2.22mV/°C/CELL

- Wp (Watt peak) = Peak Power
Air mass AM = 1.5
Irradiance E = 1000W/m²
Cell temperature Tc = 25°C
- Normal operating Cell Temperature at:
Irradiance E = 800W/m²
Cell temperature Tu = 20°C
Wind speed Vw = 1 m/s
- Diagonal lifting of module plane.
- Per IEC 61215 Test requirements.

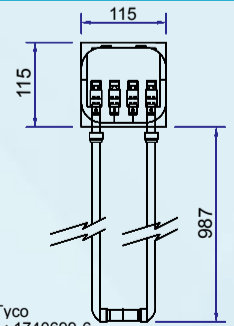
MOUNTING HOLES



ALUMINUM FRAME DETAILS

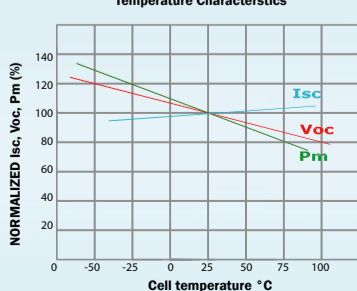


JB - 3

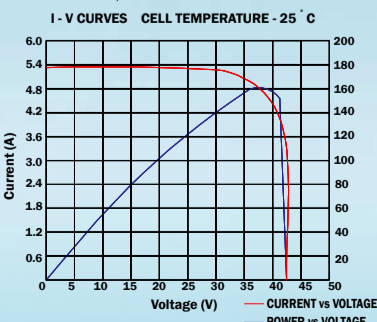


Make: Tyco
Part No.: 1740699-6

NORMALIZED Isc, Voc, Pm Vs module Temperature Characteristics



GRAPH-CURRENT, POWER vs VOLTAGE CHARACTERISTICS



UPV SOLAR

Udhaya Energy Photovoltaics Pvt Limited

1/279z, Mudalipalayam, Arasur (P.O),

Coimbatore 641 407 Tamil Nadu, INDIA

Tel : +91 422 2361170, +91 98944 99910

Fax : +91 422 2361180, +91 422 2560992

Email : info@upvsolar.com Website : www.upvsolar.in