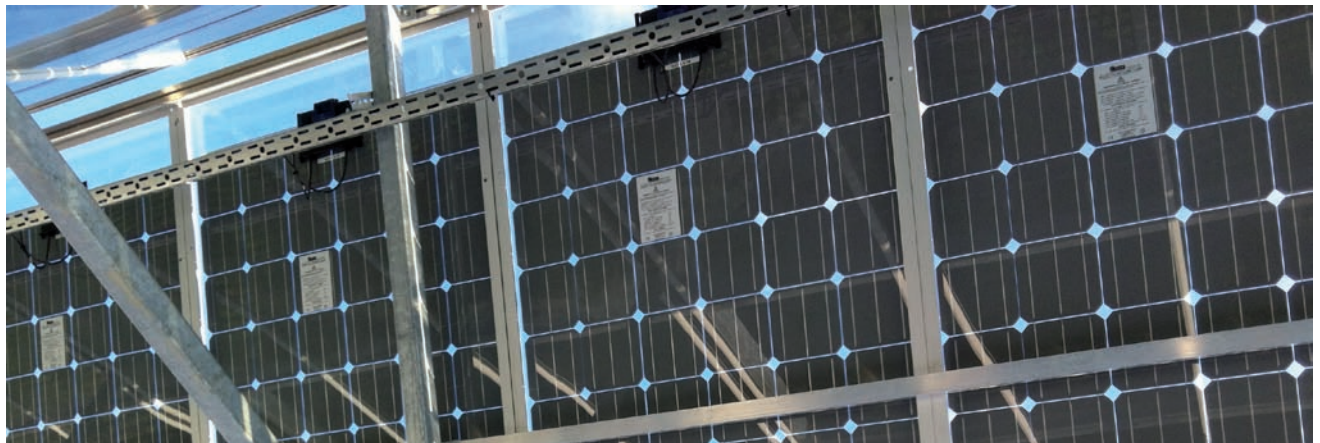




PVP-GE-MODULE

Doubleglassmodule with frame 60 cells, Poly- und Monocrystalline



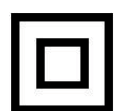
- Alternative solution to glas-foil modules: doubleglassmodule with frame
- Produced in Austria with modern production equipment
- Improved protection of cells against dynamic loads: neutral zone
- Very low weight by using tempered 2mm thin glass.
- excellent fire resistance class because of no backsheet
- Superior stability in alpine snow and wind loads.
- Extremely durable due to special glass composite system
- Quality certificate: IEC 61215 and IEC 61730
- positive power tolerance: up to +3%
- 10 years performance guarantee 90%
- 25 years performance guarantee 80%
- 10 years product warranty

**RESILIENT SURFACE
UP TO 1,2 TONNES/MODULE !!**

Overview Doubleglassmodule 60 cells with frame	
Max Power Pmpp [Wp] Mono	250 / 255 / 260
Max Power Pmpp [Wp] Poly	240 / 245 / 250
L x W x H [mm]	1629 x 989 x 40,5
Weight [kg]	21,5



- Qualified, IEC 61215
- Safety tested, IEC 61730
- Periodic inspection



WE CATCH THE SUN FOR YOU

PVP-GExxxP/M with frame

60 cells, Poly- und Monocrystalline



Electrical data monocrystalline		STC*			800W/m ² NOCT**		
maximum power (P _{mpp})	[Wp]	250	255	260	181,1	183,9	187,5
voltage at P _{mpp} (V _{mpp})	[V]	30,4	30,9	31,5	27,4	27,8	28,0
current at P _{mpp} (I _{mpp})	[A]	8,2	8,2	8,3	6,6	6,6	6,7
open circuit voltage (V _{oc})	[V]	38,3	38,4	38,5	34,5	34,6	34,7
short circuit current (I _{sc})	[A]	8,8	8,8	8,9	7,1	7,1	7,2
module efficiency	[%]	15,5	15,8	16,1			

Electrical data polycrystalline		STC*			800W/m ² NOCT**		
maximum power (P _{mpp})	[Wp]	240	245	250	173,1	176,7	180,3
voltage at P _{mpp} (V _{mpp})	[V]	31,0	31,4	31,4	26,0	26,2	26,2
current at P _{mpp} (I _{mpp})	[A]	7,7	7,8	8,0	6,7	6,8	6,9
open circuit voltage (V _{oc})	[V]	37,4	37,6	37,9	33,8	34,0	34,2
short circuit current (I _{sc})	[A]	8,3	8,4	8,6	6,2	6,3	6,4
module efficiency	[%]	14,9	15,2	15,5			

* Standard-test-conditions (STC) 1.000W/m²; AM 1,5; 25°C

** 800 W/m²; AM 1,5; normal operating cell temperature (NOCT)

Minor reduction in efficiency under partial load conditions: at 200W/m² 95% of the STC efficiency (1000W/m²) is achieved

thermal characteristics / temperature coefficient

	TK P	TK Voc	TK I _{sc}	NOCT
Mono	-0,42 %/K	-0,32 %/K	0,047 %/K	48°C +/-2°C
Poly	-0,43 %/K	-0,32 %/K	0,049 %/K	48°C +/-2°C

additional data

Plus sorting	-0% bis +3%
max. mechanical load	8000 N/m ²
max. system voltage	1000V
safety class	II
max. reverse current	15A
junction box	Huber Suhner HA3
bypass diodes	3 Typ Schottky
protection class junction box	IP67
cable length/cross section	1000mm / 4mm ²
connectors	Radox Solar
operating temperature	-40°C ~ +85°C
cells	60pcs* 156x156 Poly / Mono
frontglass , backglass	2,1mm / 2,1mm
frame	anodized aluminium

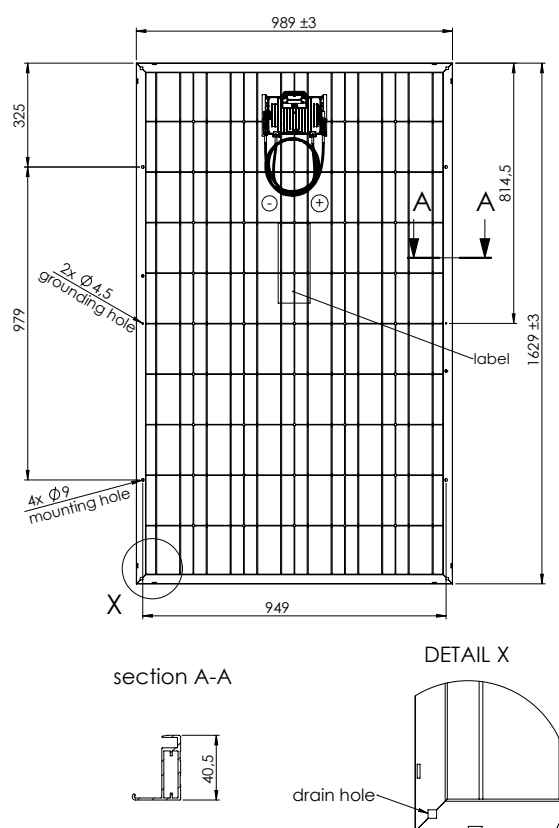
measurement tolerance +/-3%

* On request also available in 48 and 60 cells.

This datasheet is not legally binding. Actual specifications and / or product features may vary. PV Products reserves the right to make specifications changes without notice. Caution: Read the safety and installation instructions before using the product. The currently valid warranty/ guarantee declaration and the general delivery terms and conditions of the PV Products GmbH are part of this datasheet. Further details can be found on our website.

This data sheet complies with the requirements of EN 50380

technical drawing



ISO 9001:2008 No.12332/0
 ISO 14001:2004 No.01799/0
 BS OHSAS 18001:2007 No.00782/0