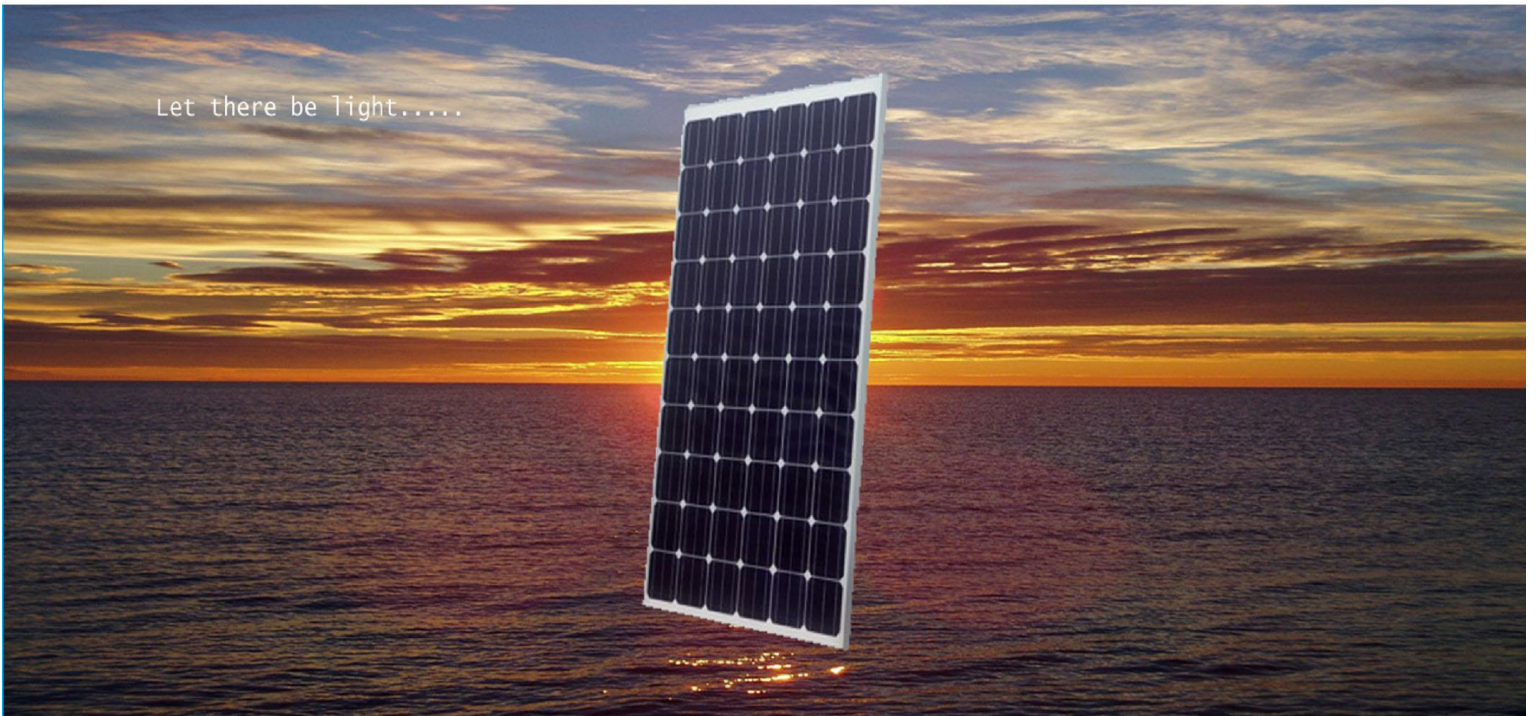


Let there be light....



# SolarVolt Power

## *Unleash the Power*

### **SVP240W-UE Ultra-Efficient**

#### **Designed From the Ground Up**

Our hybridized lamination process is what makes our combined efficiencies possible.

#### **Industry's Longest Warranty**

Full Lifetime Warranty, with the ability to transfer to future owners.

Both power output (warrantied 90% or higher) and frame construction.

Once you purchase SVP modules, you'll never need to buy a replacement.

#### **Industry's Lowest Temperature Coefficient**

50% lower than any module currently on the market today. (i.e. Power (P)  $-0.19\% / K$ )

The customer gets more of what they paid for.

SolarVolt Power is a micro-manufacturer of high quality, ultra high efficient solar modules. We are not now, nor will we ever be a large volume manufacturer, because we take more care in every aspect of our modules build process than any other company. Each and every unit is hand tested throughout its production, making for the quickest final test, hours before shipping to our customers. With our industry leading lifetime warranty, our customers know for a fact, that these will be the last units they will ever need to purchase for their customers. All units meet or exceed the following criteria:

IEC 61215 Ed.2, IEC 61730, CE, TUV and UL1703



## Model – SVP240W-UE Ultra-High Efficient Solar Module

### Electrical Data

(STC)\*

Max.Power (Pmax)	240 Watts
Efficiency ( $\eta$ )	18.2%
Rated Voltage (Vmp)	30.06V
Rated Current (Imp)	7.99A
Open Circuit Voltage (Voc)	37.60V
Short Circuit Current (Isc)	8.22A
Maximum System Voltage	600V (UL)
Maximum System Voltage	1000V (IEC)
Maximum Reverse Current	16A

\*(STC) @ 25° C 1000 w/m<sup>2</sup> AM 1.50

### Temperature Coefficient

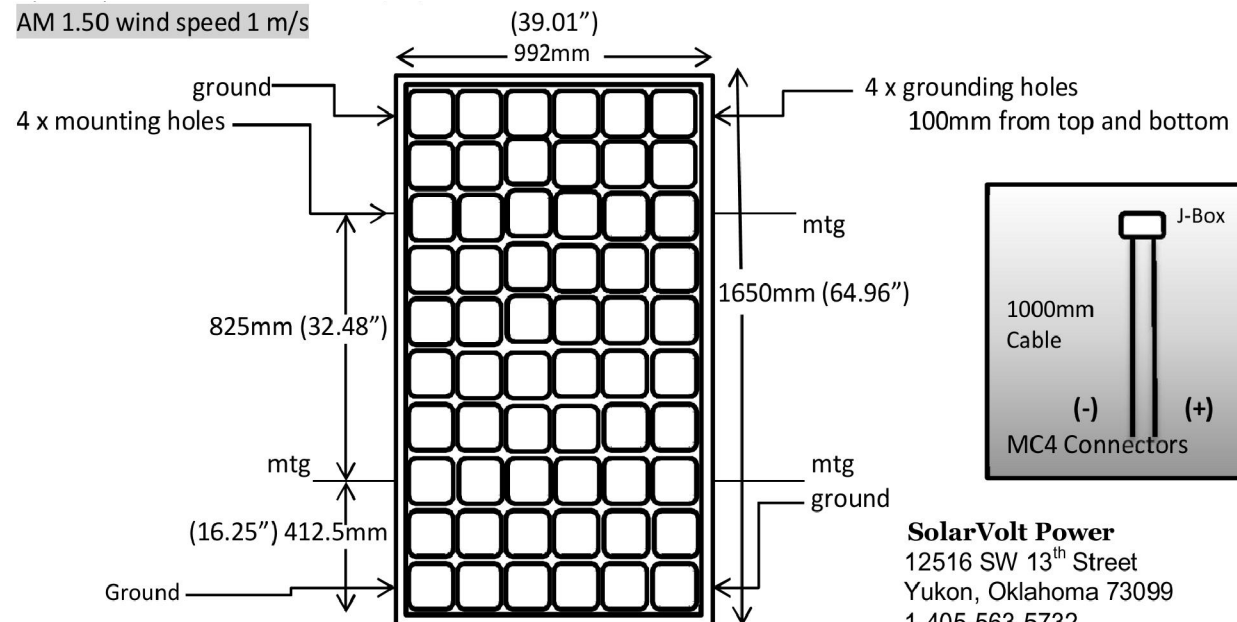
Power (P) -0.19% / K
Voltage Voc - .23% / K
Current (Isc) +.0026% / K

(NOCT)\*

Nominal Power (Pmax)	220W
Rated Voltage (Vmp)	27.65V
Rated Current (Imp)	7.95A
Open Circuit Voltage (Voc)	28.44V
Short Circuit Current (Isc)	8.18A

\*(NOCT) @ ambient 20° C 800 W/m,

AM 1.50 wind speed 1 m/s



SolarVolt Power® is proud to be a "Zero Debt" Company  
All Rights Reserved © 2012

### Technical Data

Number of Cells	60 (6x10)
Solar Cells Type	Monocrystalline
Solar Cells Size	156x156mm (6x6")
Module Dimensions	1650x992x45mm
Module Dimensions	65x39-1/16x1-3/4"
Weight (kg/lbs)	19 / 41.9
Front Cover	3.2mm Tempered Glass
Junction Box	IP67
Module Frame	Anodized Aluminum
Diodes (3) -	10A Encapsulated with solar cells
Cables -	4mm (IEC)/12AWG(UL), 1000mm
Connectors -	MC4 or compatible
Standard Packaging	27 (modules per pallet)

### Tested Operating Conditions

Temperature	-40c – +85c
Max. Load	550 kg/m <sup>2</sup> (5400 Pa), front, (e.g. snow) w/specified mounting configurations 245 kg/m <sup>2</sup> (2400 Pa) front and back (e.g. wind)
Impact Resistance Hail:	25mm @ 23 m/s

### SolarVolt Power

12516 SW 13<sup>th</sup> Street  
Yukon, Oklahoma 73099  
1-405-563-5732

[solarvoltpower@sbcglobal.net](mailto:solarvoltpower@sbcglobal.net)  
[www.solarvoltpower.net](http://www.solarvoltpower.net)