

## STS-6M- (160-200) P-48 POLY CRYSTALLINE SOLAR MODULES 多晶硅太阳能电池

### PRODUCT OVERVIEW 产品简介

- STS Solar's modules are optimally manufactured and adjusted to meet the needs of the current market; scientifically designed module dimension makes the installation simple and easy.
- 产品符合市场需求，尺寸设计科学合理、安装简便
- Our continuous efforts in quality assurance system and certifications the international authentication institutions of STS Solar's products demonstrate our commitment to product quality and customer requirements.
- 产品性能稳定、质量可靠，已获得国内外权威机构检测认证

### MODULE CHARACTERISTICS 产品特点

- High efficiency crystalline silicon solar cells.
- 高效晶硅太阳能电池片
- High transmission low iron tempered glass, strong mechanical resistance.
- 高透光低铁钢化玻璃
- Standard waterproof junction box, with bypass diode.
- 标准防水接线盒（带二极管）。
- High endurance to different atrocious weather.
- 高耐候性
- Custom designed modules according to clients' requirement.
- 根据客户需求量身定制



### MECHANICAL PARAMETERS 物理性能

Cell(mm)	Poly 156×156
电池片(mm)	多晶 156×156
Weight(kg)	15
重量(kg)	15
Dimensions(LxWxH)(mm)	1326×990×40
尺寸(LxWxH)(mm)	1326×990×40
Cable Length(mm)	≥900
线缆长度(mm)	≥900
Cable cross section size(mm <sup>2</sup> )	4
线缆截面大小	4
No. of cells and connections	48 (8×6)
电池片数量	48 (8×6)
No. of diodes	3
二极管数量	3
Packing configuration	25pcs/carton
包装	25pcs/carton

### WORKING CONDITIONS 工作条件

Maximum System Voltage	DC 1000V
峰值电压	DC 1000V
Operating Temp.	-40℃~+85℃
工作温度	-40℃~+85℃
Maximum Series Fuse (A)	12
最大保险系数(A)	12
Static loading	≥2400Pa
抗压	≥2400Pa
Grounding conductivity	≤0.1Ω
地表导电率	≤0.1Ω
NOCT	45±2℃
电池额定工作温度	45±2℃
Application Class	Class A
应用等级	A 级
Insulation Resistance	≥100MΩ
绝缘电阻	≥100MΩ

### GUARANTEE 质量保证

10-year limited product warranty.

十年产品质保

Limited performance warranty: 10 years at 90% of the minimal rated power output, 25 years at 80% of the minimal rated power out

功率保证：输出功率 10 年内不低于额定功率的 90%，25 年内不低于额定功率的 80%

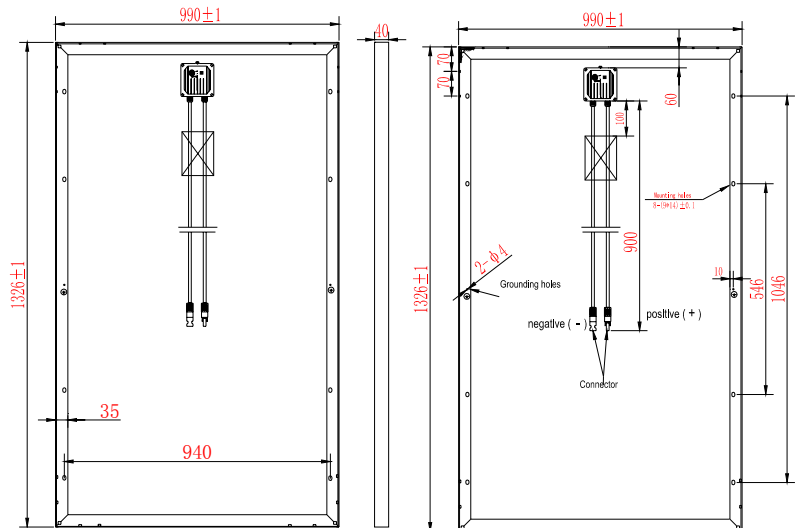
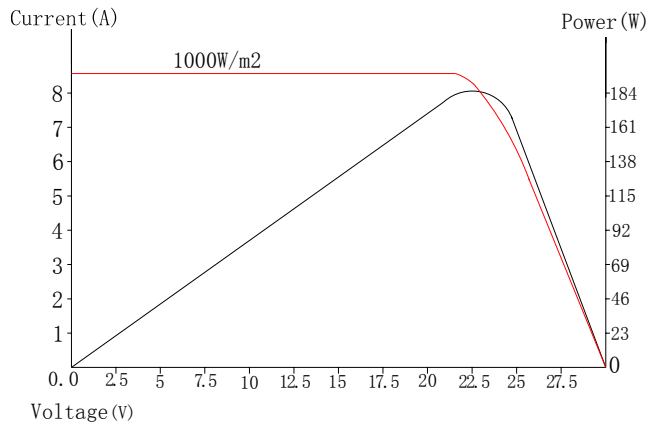
## STS-6M- (160-200) P-48

### POLY CRYSTALLINE SOLAR MODULES 多晶硅太阳能电池

#### ELECTRICAL PARAMETERS 电性能参数

TYPE 型号	STS-6M-160 P-48	STS-6M-165 P-48	STS-6M-170 P-48	STS-6M-175 P-48	STS-6M-180 P-48	STS-6M-185 P-48	STS-6M-190 P-48	STS-6M-195 P-48	STS-6M-200 P-48
Pmax(w) 功率	160	165	170	175	180	185	190	195	200
(Voc/V)开路电压	28.3	28.7	29.1	29.4	29.5	29.7	30.1	30.2	30.3
(Vmp/V)峰值电压	21.5	21.9	22.2	22.5	22.9	23.3	23.6	23.9	24.2
(Isc/A)短路电流	7.91	8.01	8.11	8.21	8.35	8.45	8.52	8.64	8.76
(Imp/A)峰值电流	7.45	7.54	7.67	7.78	7.87	7.94	8.06	8.16	8.27
Power Tolerance 公差	±3%								
$\alpha$ Isc $\alpha$ 温度系数	+0.04%/°C								
$\beta$ Voc $\beta$ 温度系数	-0.30%/°C								
$\gamma$ Pmp $\gamma$ 温度系数	-0.44%/°C								
STC 标准测试条件	AM1.5,1000W/m <sup>2</sup> ·25°C								

#### I-V CURVE 曲线图



Zhejiang Jingshang New Energy Technology Inc.

浙江晶尚新能源科技有限公司

Add: Nanxun Industrial Park, Huzhou, Zhejiang, 313009 China

地址: 浙江省湖州市南浔工业园区

Tel: +86 572 3872111 Fax: +86 572 3872098

E-mail: sales@sts-pv.com Web: <http://www.sts-pv.com>