

Data sheet

Type of module Glass/foil module **PST XXX GT, framed**

Dimensions W: 997 mm \pm 3 mm x H: 1.345 mm \pm 3 mm

Thickness 39 mm \pm 1 mm (framed)

Weight app. **17.5 kg** (including frame)

Assembly Front: **4.0mm** toughened safety glass extra white, structured, EVA encapsulation of solar cells
Rear: PET foil, white
Frame: aluminium, silver eloxed

Arrangement 48 pseudo square multicrystalline solar cells 156 x 156 mm series connection of 6 strings with 8 cells each
gap string/string: 3 mm, gap cell/cell: 3 mm

Electrical data

Model No.	Voc (V)	Isc (A)	Pmp (W)	Vmp (V)	Imp (A)	Eff
PST 210 2GP48	30.88	9.23	210	23.95	8.77	15.66%
PST 205 2GP48	30.66	9.04	205	23.87	8.59	15.29%
PST 200 2GP48	30.44	8.84	200	23.79	8.41	14.91%

Tolerances + / - 3 %

Note The electrical data applies to standard test condition (STC)
Irradiance at module level of 1000W/m² with spectrum AM 1.5
and cell temperature of 25°C

Cell temperature coefficients power -0.42%/K
open-circuit voltage -0.31%/K
short-circuit current +0.05%/K

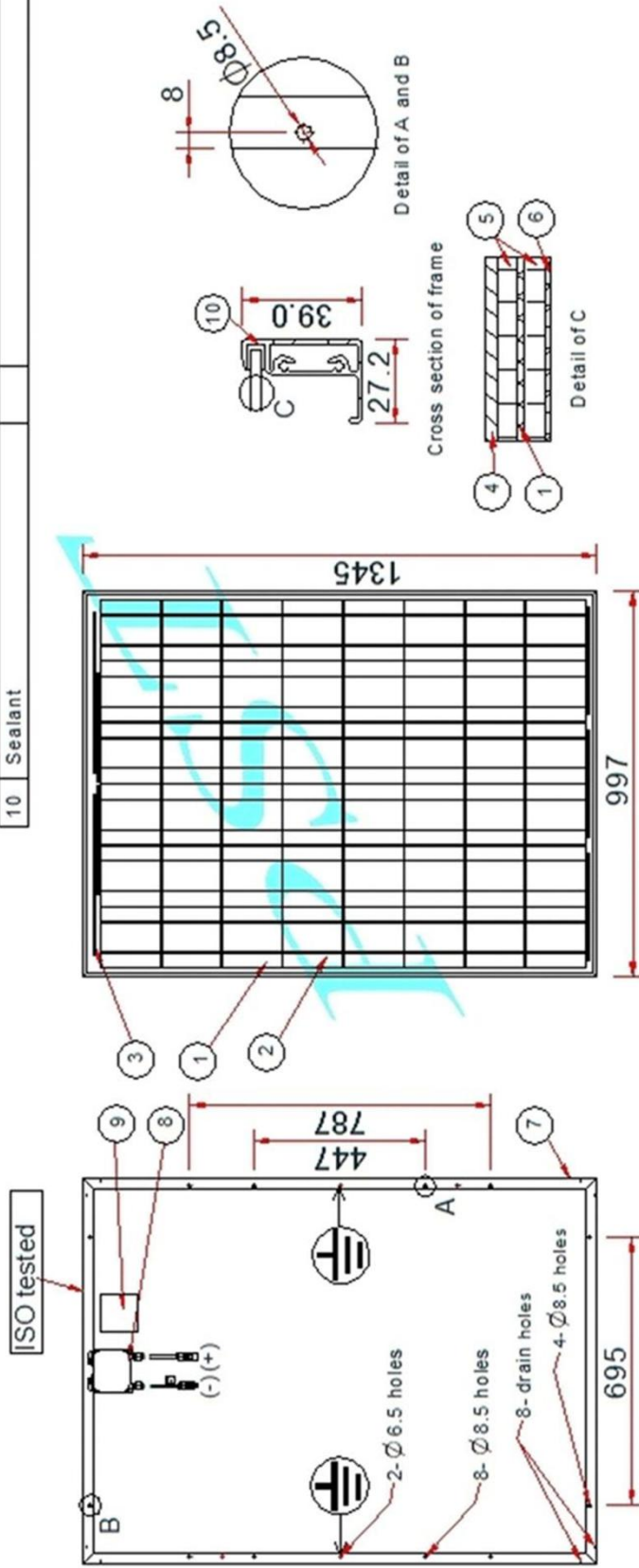
Limits Max. System voltage 1000 V DC

Electr. interface Connection box with 3 bypass diodes
4 mm² solar cable
Cable length: 100cm each
Assembled with Tyco connector
coded for plus and minus connection

Warranty 10 years 90%, 25 years 80% of output power
Standard test condition (temperature of the cells: 25°C, insulation: 1,000 W/m² and spectrum AM: 1.5).

Qualification Tüv-Rheinland IEC61215, IEC61730 and CE certified.

No.	Name	Qty	Notes
1	Solar Cell	48	
2	Interconnection ribbon		Cu base ribbon with flux
3	Edge ribbon		Cu base ribbon with flux
4	Glass	1	White toughened safety glass
5	Encapsulation		EVA
6	Backsheet		PET
7	Frame	1set	Extrusion profile with anodized
8	Junction box	1	With cable and connector
9	Label	1	
10	Sealant		



No.	Modif	Date	Appr.	Name
				PST xxx GP/GM

Appr.	Check.	Charge	Date	Scale
Tommm	Honda	Honda	2013/9/2	1:15

No.	Modif	Date	Appr.	Name
				PST
				0296.168 xxx

confidential