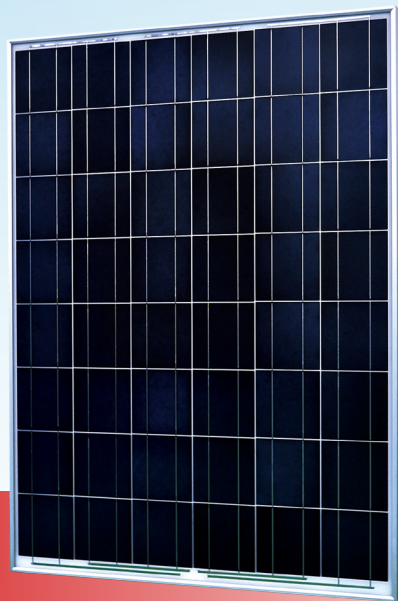




Solartech
Energy Corp.

185W-205W

Maximize solar return
with Solartech
High Performance Modules



ASC-6P-48 Series
Multi-Crystalline Photovoltaic Modules

Maximize peak output with pre-sorted high quality 6" multi-crystalline cells

Ensure 5400pa snow loads and 2400pa wind loads with high transparent tempered glass and robust anodized aluminum frame

Commit protection in the severest weather conditions with certified EVA, Back sheet foil, and Junction box

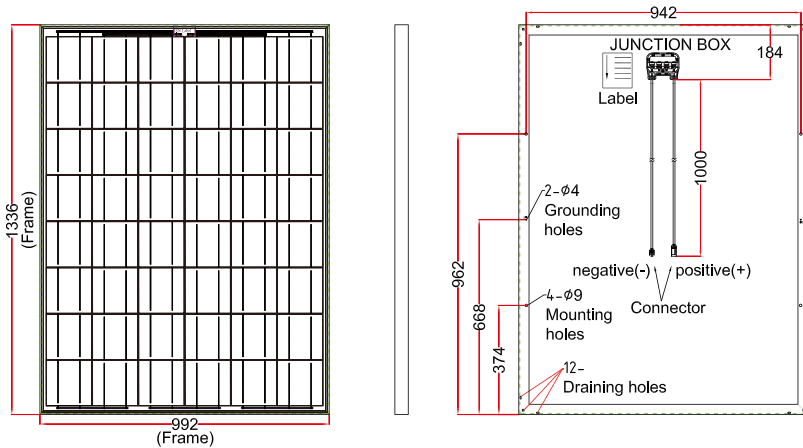
10-year limited product warranty, 25-year limited power output warranty (90% for 10 years, 80% for 25 years)



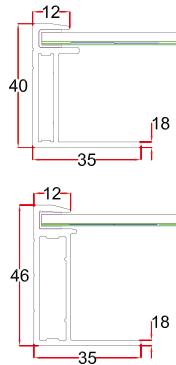
ASC-6P-48 Series 185W-205W

Multi-Crystalline Photovoltaic Modules

Mechanical Data

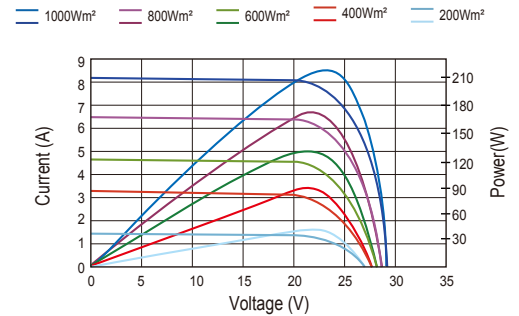


Dimension: 1336mm x 992mm x 40mm (46mm)
 Cells: 48 polycrystalline 156x156mm cells
 Connection: Junction box IP65 with 3 bypass diodes
 Cable: 4mm²x1.0mm with Tyco or MC4 compatible connectors
 Frame: Anodized aluminum
 Weight: 40mm : 15.5 kg / 34.14 lbs
 46mm : 16 kg / 35.24 lbs



IV Curve

IV and Pmax Curves with different radiation levels at 25°C



Temperature Coefficient

Temp. Coeff. of Isc = 0.065%/K
 Temp. Coeff. of Voc = -0.35%/K
 Temp. Coeff. of Pmax = -0.477%/K

Maximum Operation

Operational Temperature: -40°C to +85°C
 (-40°F to +185°F)
 Maximum System voltage(ETL): 600V DC
 Maximum Reverse Current: 15A
 Maximum Load: Snow loads 5400pa(IEC) or 550kg/m2
 Wind loads 2400pa

Electrical Characteristics @ STC*

Module Number	ASC-6P-48-185	ASC-6P-48-190	ASC-6P-48-195	ASC-6P-48-200	ASC-6P-48-205
Nominal Power Pmax[Wp]	185	190	195	200	205
Power Tolerance **	+/-3%	+/-3%	+/-3%	+/-3%	+/-3%
Nominal Voltage Vmax[V]	23.04	23.54	24.07	24.60	25.12
Nominal Current Imax[A]	8.03	8.07	8.10	8.13	8.16
Open Circuit Voc[V]	29.49	29.73	29.92	30.12	30.36
Short Circuit Isc[A]	8.53	8.57	8.60	8.63	8.66
Efficiency Eff[%]	13.96	14.34	14.71	15.09	15.47

*STC: Standard Test Conditions, measurement at radiation strength 1,000 W/m², spectral distribution AM 1.5, temperature 25°C, in accordance with EN 60904-3

**Power tolerance can be adjusted by requests

NOCT: Nominal Operating Cell Temperature, 45.8 +/- 2°C, measurement at radiation strength 800 W/m², AM 1.5, Air temperature 20°C, wind speed 1m/s
 Specifications are subject to change without notice

Warranty

10 year limited product workmanship warranty

25 year limited power output warranty: 90% minimum rated power for 10 years. 80% minimum rated power for 25 years

Solartech Energy Corp.

Linko Office
 No. 51, Dinghu 1st St. 4th Industrial Park, Gueishan, Taoyuan 333, Taiwan
 Tel: +886-3-3188288 Fax: +886-3-3188266 E-mail: sales@solartech-energy.com

Hsinchu Fab
 No. 16, Guangfu N. Rd., Hsinchu Industrial Park, Hukou, Hsinchu 303, Taiwan
 Tel: +886-3-5276888 Fax: +886-3-5246866