



- MSM250-72P MSM255-72P MSM260-72P
- MSM265-72P MSM270-72P MSM275-72P MSM280-72P
- MSM285-72P MSM290-72P MSM295-72P MSM300-72P

Electrical Specifications

*STC : Irradiance 1000W/m², AM1.5 spectrum, module temperature 25°C

Model type	250-72P	255-72P	260-72P	265-72P	270-72P	275-72P	280-72P	285-72P	290-72P	295-72P	300-72P
Peak power (Pmax)	250W	255W	260W	265W	270W	275W	280W	285W	290W	295W	300W
Cell Efficiency	14.8%	15.0%	15.4%	15.6%	15.9%	16.2%	16.5%	16.8%	17.2%	17.4%	17.7%
Maximum power voltage (Vmp)	35.0V	35.0V	35.0V	35.5V	35.5V	35.5V	36.0V	36.0V	36.0V	36.5V	36.5V
Maximum power current (Imp)	7.15A	7.29A	7.43A	7.48A	7.61A	7.75A	7.78A	7.92A	8.08A	8.1A	8.22A
Open circuit voltage (Voc)	43.4V	43.4V	43.4V	44.0V	44.0V	44.0V	44.6V	44.6V	44.9V	45.3V	45.3V
Short circuit current (Isc)	7.71A	7.87A	7.95A	8.06A	8.14A	8.30A	8.40A	8.55A	8.61A	8.72A	8.79A
Power Tolerance	±3%										
Maximum system voltage	1000VDC										
Series fuse rating (A)	15										
Number of bypass diode	6										

Temperature Coefficients

- Current Temperature Coefficient α(Isc) 0.030%/°C
- Voltage Temperature Coefficient β(Voc) -0.32%/°C
- Power Temperature Coefficient γ(Pmax) -0.42%/°C

Mechanical Characteristics

- Dimensions : 1957 x992 x 50mm
 (77.05x39.06x1.97 inch)
- Weight: 22.5 kg (49.6 lbs)
- Solar Cells: 72 cells in series(6x 12)
- Construction: High-transmission low-iron tempered glass , EVA, TPT
- Frame: Anodized aluminum is mainly for improving corrosion resistance. Color: silver

Output(Optional)

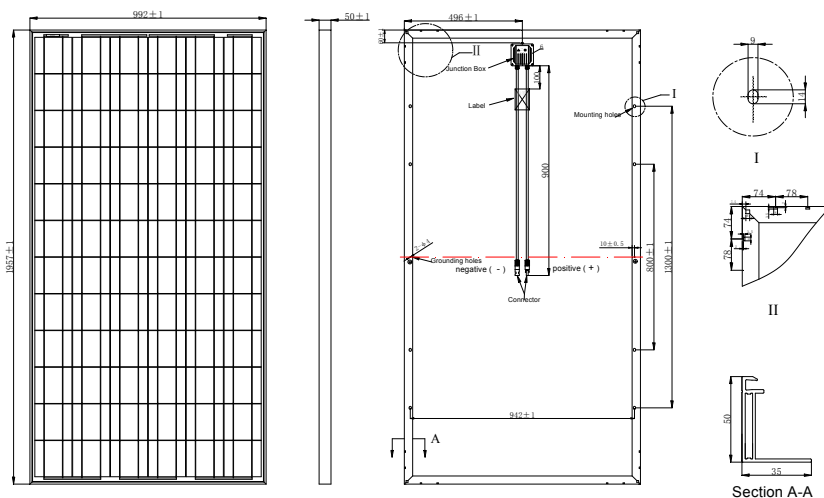
- Cable LAPP(4 mm2)
- Lengths 900mm(-) and 900(+)
- Connector MC Plug Type IV

Module Warranty:

- 25-year limited warranty of 80% power output;
- 10-year limited warranty of 90% power output;
- 5-year limited warranty of materials and workmanship.

Note: This publication summarizes product warranty and Specifications which are subject to change without notice

Module Diagram



Electrical Performance

