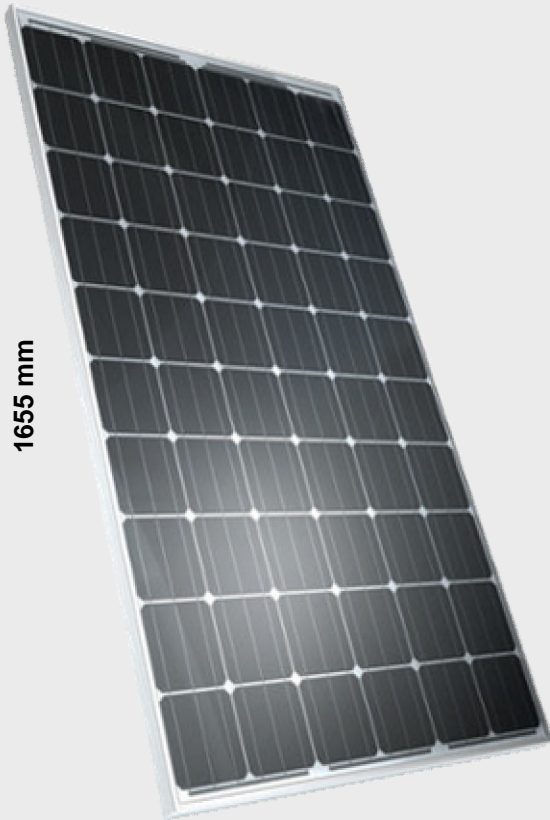


989 mm

1655 mm



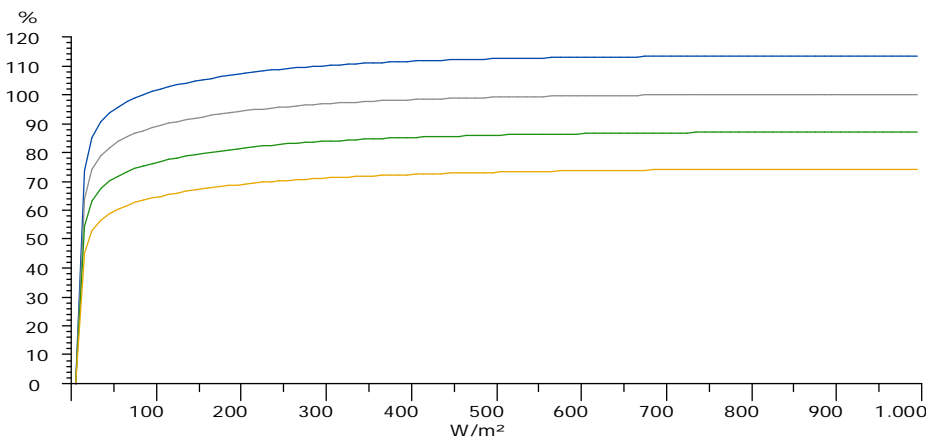
DCH 3BB High-Performance Panel

High Yields due to high-efficient 3-Busbar-Technology. The 3-Busbar-Technology guarantees higher conversion efficiency of the cells and an excellent low insulation utilization. The photovoltaic effect is used more effectively.

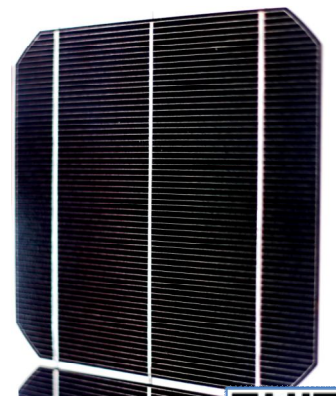
- ◆ Use of pre-selected cells only
- ◆ Narrow output tolerance
- ◆ Plus-sorted modules delivered!
- ◆ Wide temperature range
- ◆ High resistance to mechanical loads
- ◆ UV / Ozone resistant
- ◆ Flash-Daten for each module provided
- ◆ Easy and fast installation
- ◆ Self-supporting aluminium frame
- ◆ System voltage up to 1000V

10 Years Product Warranty
10 Years Limited Performance Warranty
for 90% of nominal power
25 Years Limited Performance Warranty
for 80% of nominal Power

DCH-Group.de DCH250M3BB



— rel. Wirkungsgrad 0 °C — rel. Wirkungsgrad 25 °C
— rel. Wirkungsgrad 50 °C — rel. Wirkungsgrad 75 °C

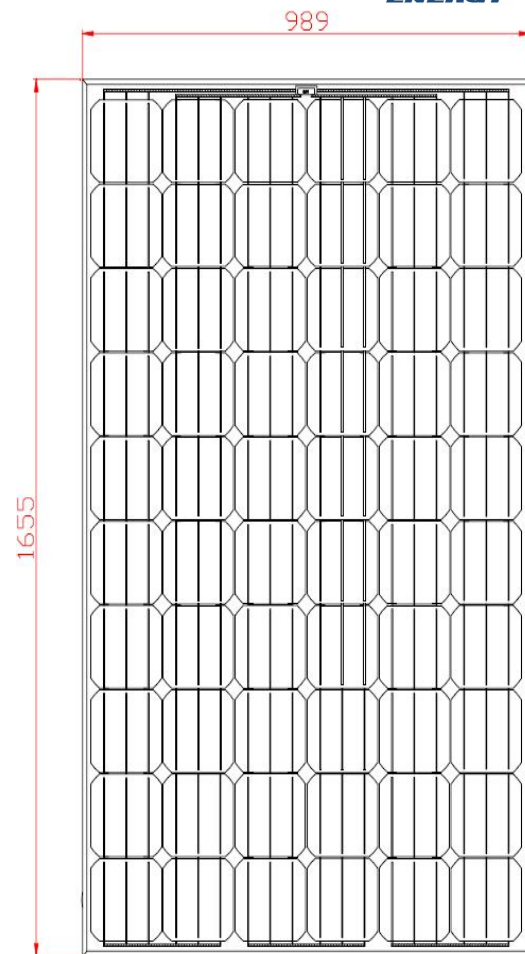


Ihr Solar und LED Experte!
Your solar und LED expert!

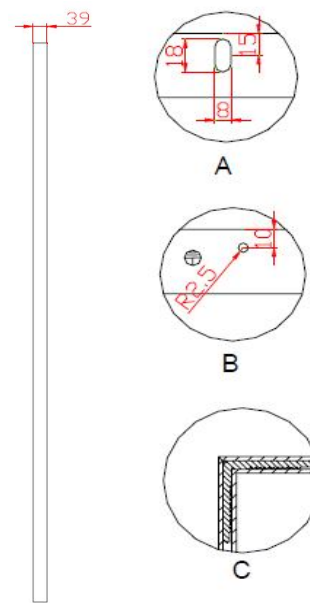
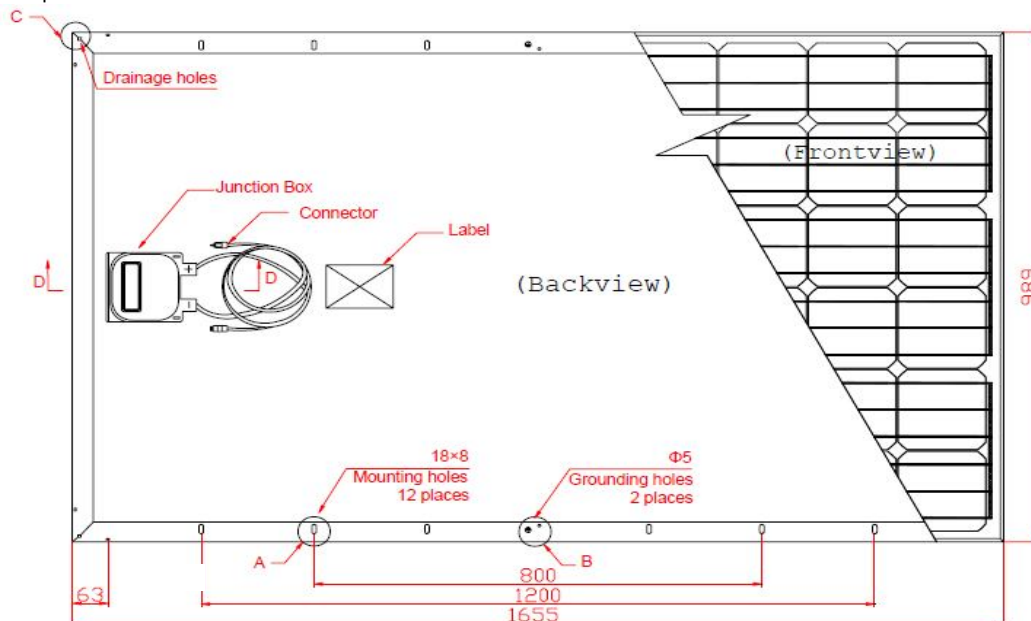
DCH250M-3BB



Nominal Power	250 Wp
Voltage at max. power U_{mp}	31,00 V
Current at max. power I_{mp}	8,17 A
Open circuit voltage U_{oc}	38,00V
Short circuit current I_{sc}	8,73 A
Nominal power tolerance	0~+3%
Temperature Coefficient I_{sc}	4,6 mA/K
Temperature Coefficient U_{sc}	-127,0 mV/K
Efficiency	15,5%
Number of Bypass-Diodes	3 pcs.
Junction Box	Protection type: IP65 with spring-cage term
Solar cells per module	60
Solar cell type	Mono-crystalline with 3 BB
	156 x 156 mm ²
Connection	Junction-Box with 6 bypass-diodes
	4 mm ² PV wire with MC4 – connector
	ca. 900 mm each
Max. system voltage	1000 VDC
Operating temperature range	-40 ~ +85°C
Dimensions (tolerance +/- 1 mm)	1,655 mm x 989 mm
Frame Height (tolerance +/- 1 mm)	39 mm
Weight	ca. 19,6 kg
Laminat/Glas	3,2 mm ESG extra-white
Colouring	Back side: white
Hail test:	Maximum diameter of 25mm with an impact speed of 23 m/s
Max. pressure allowed:	Max. 5400 N/m ²



Data applies to Standard Test Conditions (STC): Insolation 1000W/m² with an AM of 1,5 and a cell temperature of 25°C



DCH-Energy GmbH
57080 Siegen

Fon: 0271 – 38 78 10-0
Fax: 0271 – 38 78 10-22

E-Mail: info@dch-group.de
Internet: www.dch-group.de

