

Photovoltaic Module

Monocrystalline

GS-300M



Quality and Safety

- *Rigorous quality control meeting the highest international standards
- *High-transmissivity low-iron tempered glass, strong aluminium frame Using UV-resistant silicon
- *Safety Class II,conformity to CE

Features

- *Aesthetic appearance with excellent efficiency based on innovative photovoltaic technologies
- *High quality,strong aluminium frame,passing mechanical load testing 5400 Pa and wind pressure 2400Pa

Warranties

- *10 years limited product warranty
- *15 years at90% of the minimal rated power output
- *25 years at80% of the minimal rated power output

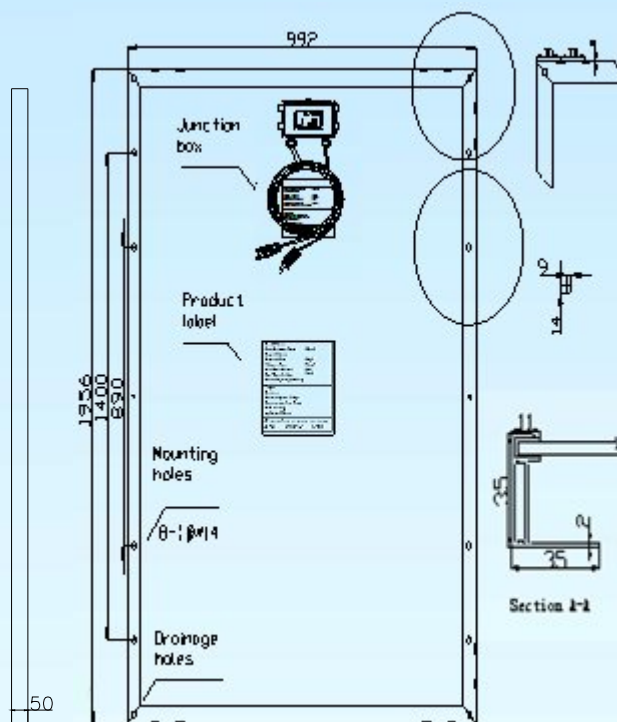
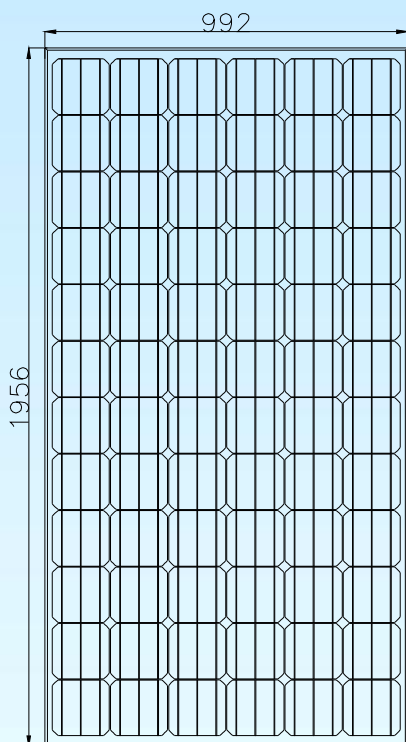
Certificates



Electrical Characteristics

Model	GS-280M	GS-290M	GS-300M	GS-310M	GS-320M
Maximum Power at STC (P _{max})	280W	290W	300W	310W	320W
Optimum Operating Voltage (V _{mp})	36.62V	36.77V	37.13V	37.52V	37.61
Optimum Operating Current (I _{mp})	7.65A	7.9A	8.08A	8.27A	8.51
Open-Circuit Voltage (V _{oc})	45.93V	45.74V	46.11V	47.46V	47.65
Short-Circuit Current (I _{sc})	8.34A	8.59A	8.64A	8.7A	9.07
Solar Cell Efficiency (%)	16.6	17.2	17.78	18.4	18.8
Solar Module Efficiency (%)	14.43	14.95	15.46	15.98	16.49
Operating Temperature	-40to85°C				
Maximum System Voltage	DC1000				
Maximum Series Fuse Rating	15A				
Power Tolerance	+/-3%				
STC:Irradiance 1000W/m ² ,Modules Temperature 25°C,AM=1.5					

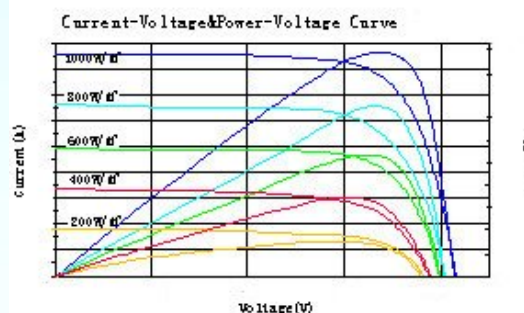
Engineering Drawings



Mechanical Characteristics

Solar cell	Mono-Crystalline 156*156mm
No. of cells	72(6×12)
Dimensions	1956mm*992mm*50mm
Weight	24kg
Front glass	3.2mm tempered glass
Frame	Anodized aluminium alloy
Junction box	PV-LH0808
Connector	Plug and socket
Output cables	PV 2.5mm ² , 0.9m
1*20'	/
1*40'	/
1*40'HQ	/

IV-Curves



Temperature Coefficient

Nominal Operating Cell Temperature (NOCT)	47°C ± 2°C
Temperature Coefficient of P _{max}	-0.47%/K
Temperature Coefficient of V _{OC}	-0.351%/K
Temperature Coefficient of I _{SC}	+0.035%/K