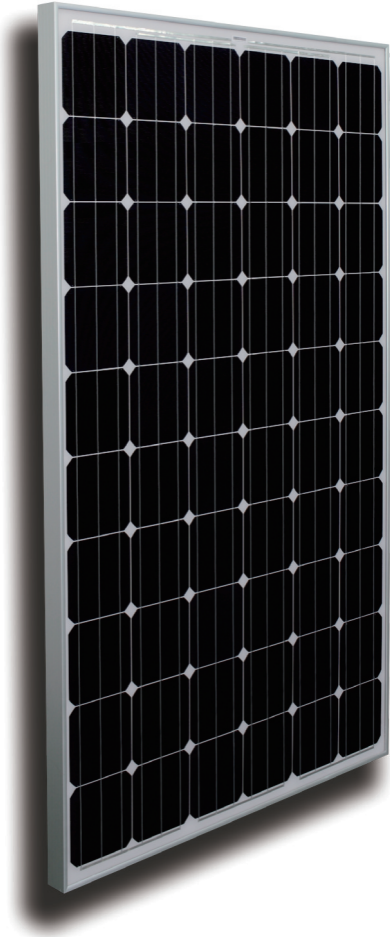


# JHX - xxxS60

Peak Power **235|240|245|250|255** wp



Guaranteed 0-5wp plus output tolerance ensures high return on investment



High module efficiency (up to 15.7%) through superior manufacturing technology



Module can bear snow loads up to 5400Pa and wind loads up to 2400Pa



Certified by the most reputable labs according to IEC:61215;IEC:61730-1/2 standards



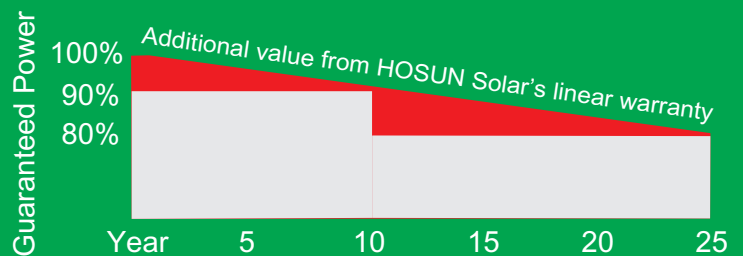
Manufactured and certified according to International Quality and Environment Management System (ISO9001,ISO14001,ISO18000)



linear performance warranty

10 years product warranty

25 years power warranty



**Superior Frame Design**  
Specially designed drainage holes and rigid construction prevent frames from deforming. Screwless frame design for a long term durability.



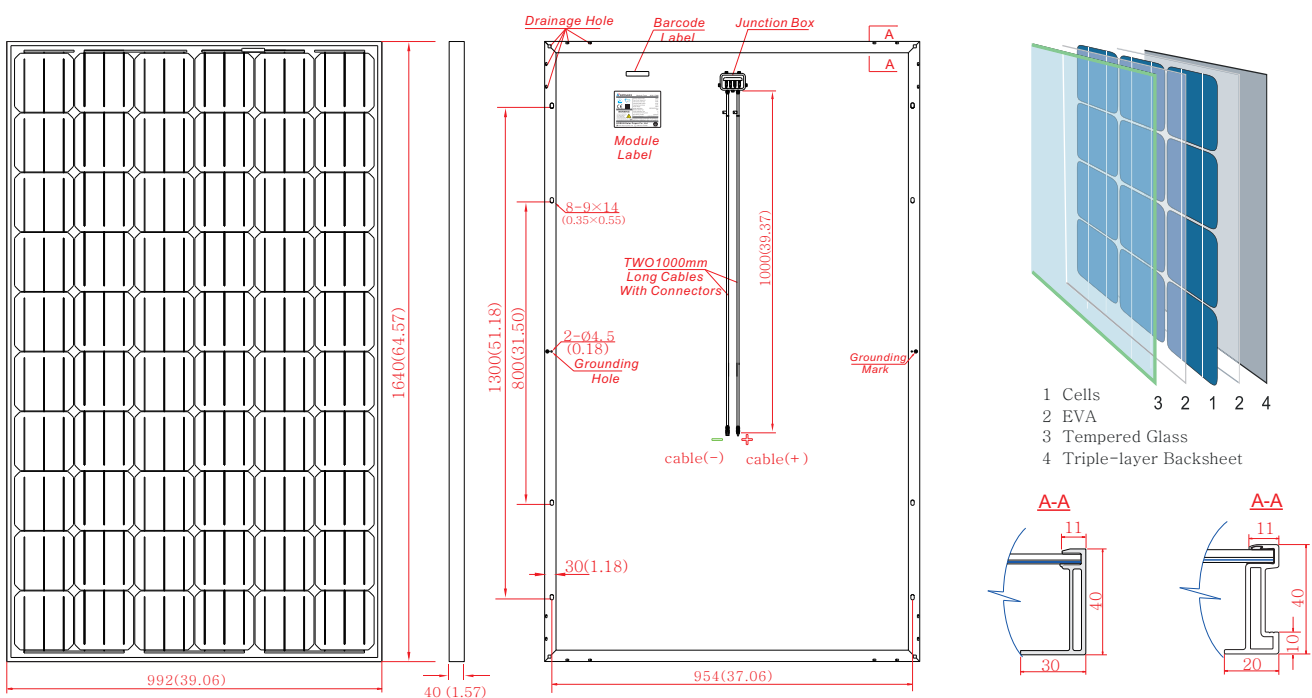
The new aluminum alloy (without mounting hole) is quicker in installment and better in protecting module, thus saving the mounting expense. It can help to avoid cracks on solar cells caused during the installment.

## ELECTRICAL CHARACTERISTICS

Module Type	JHX-235S60	JHX-240S60	JHX-245S60	JHX-250S60	JHX-255S60
Maximum Power at STC (Pmax)	235W	240W	245W	250W	255W
Maximum Power Voltage (Vmp)	30.37V	30.58V	30.75V	30.98V	31.18V
Maximum Power Current (Imp)	7.74A	7.85A	7.97A	8.07A	8.18A
Open Circuit Voltage (Voc)	37.19V	37.49V	37.74V	37.92V	38.08V
Short Circuit Current (Isc)	8.49A	8.54A	8.58A	8.62A	8.68A
Maximum System Voltage	DC 1000V(TÜV) / DC 600V(UL)				
Operating Temperature	-40°C to +85°C				
Maximum Series Fuse Rating	15A				
Application Class	Class A				

STC: Irradiation 1000W/m<sup>2</sup>, Module Temperature 25°C, AM=1.5 ; Power Measurement Tolerance:±3%

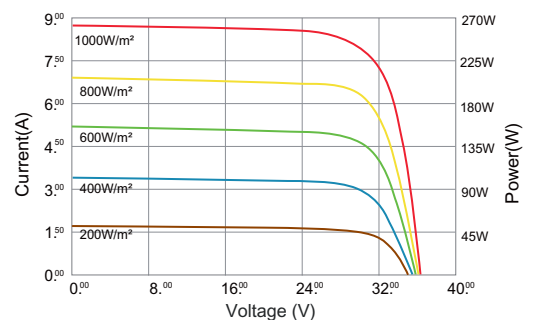
## PHYSICAL CHARACTERISTICS



## MECHANICAL DATA

Dimension	1640×992×40mm(64.57×39.06×1.57)
Cell Type	Mono Crystalline Silicon, 156mm × 156mm
Number of Cells	60 cells in series(10×6)
Weight	20.0kg±0.5kg
Front Glass	High Transparency Solar Glass 3.2mm
Frame	Anodized Aluminium Alloy
Junction Box	TÜV: IP65 rated / IP67 rated, 3/6 Diodes
Cable	Photovoltaic Technology 4.0mm <sup>2</sup> , 1000mm,
Connector	MC-4 / DJ2011-4(SHIHE) Compatible

Current-Voltage & Power-Voltage Curve  
JHX-250S60 (cell temperature: 25°C)



## TEMPERATURE RATINGS

Nominal Operating Cell Temperature(NOCT):	47°C(±2°C)
Temperature Coefficient of Pmax	-0.48%/°C
Temperature Coefficient of Voc	-0.34%/°C
Temperature Coefficient of Isc	0.05%/°C

NOCT: Irradiation 800W/m<sup>2</sup>, ambient temperature 20°C, wind speed 1m/s

## PACKING CONFIGURATION

Container	20GP	40GP	40HC
Pieces per pallet	48/52	48/52	50/54
Pallets per container	6	14	14
Pieces per container	288/312	672/728	700/756