

JHX - XXXS72

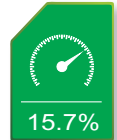
Peak Power **285|290|295|300|305** wp



Guaranteed 0-5wp plus output tolerance ensures high return on investment



High module efficiency (up to 15.7%) through superior manufacturing technology



Module can bear snow loads up to 5400Pa and wind loads up to 2400Pa



Certified by the most reputable labs according to IEC:61215;IEC:61730-1/2 standards



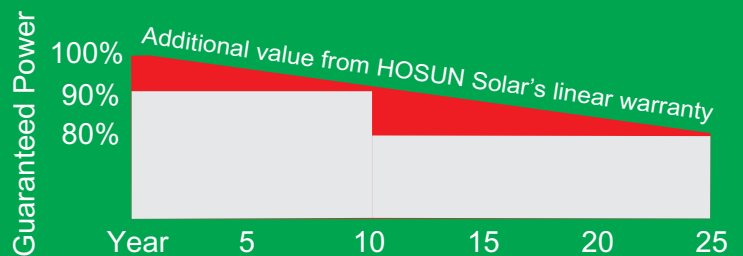
Manufactured and certified according to International Quality and Environment Management System (ISO9001,ISO14001,ISO18000)



linear performance warranty

10 years product warranty

25 years power warranty



Superior Frame Design
Specially designed drainage holes and rigid construction prevent frames from deforming. Screwless frame design for a long term durability.



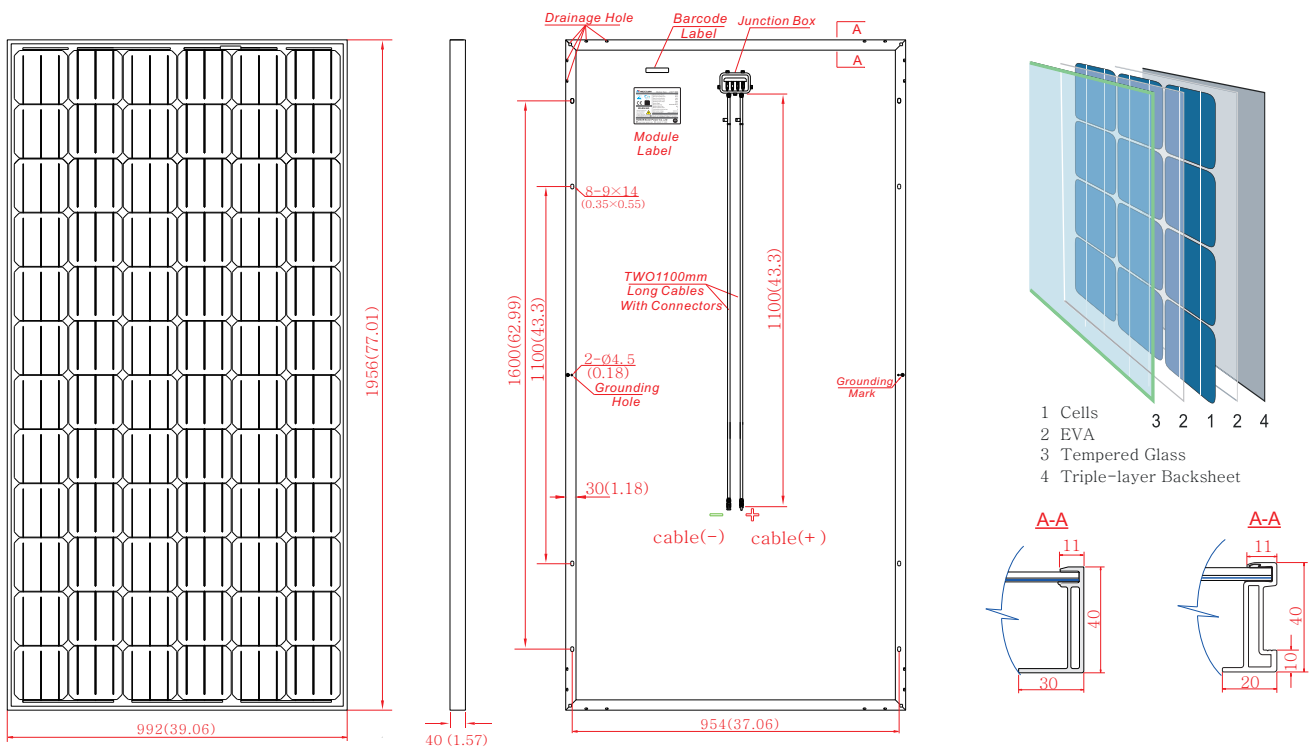
The new aluminum alloy (without mounting hole) is quicker in installment and better in protecting module, thus saving the mounting expense. It can help to avoid cracks on solar cells caused during the installment.

ELECTRICAL CHARACTERISTICS

Module Type	JHX-285S72	JHX-290S72	JHX-295S72	JHX-300S72	JHX-305S72
Maximum Power at STC (Pmax)	285W	290W	295W	300W	305W
Maximum Power Voltage (Vmp)	36.45V	36.71V	36.97V	37.23V	37.52V
Maximum Power Current (Imp)	7.82A	7.90A	7.98A	8.06A	8.13A
Open Circuit Voltage (Voc)	45.42V	45.72V	45.92V	46.10V	46.28V
Short Circuit Current (Isc)	8.56A	8.60A	8.64A	8.68A	8.72A
Maximum System Voltage	DC 1000V(TÜV) / DC 600V(UL)				
Operating Temperature	-40°C to +85°C				
Maximum Series Fuse Rating	15A				
Application Class	Class A				

STC: Irradiation 1000W/m², Module Temperature 25°C, AM=1.5 ; Power Measurement Tolerance:±3%

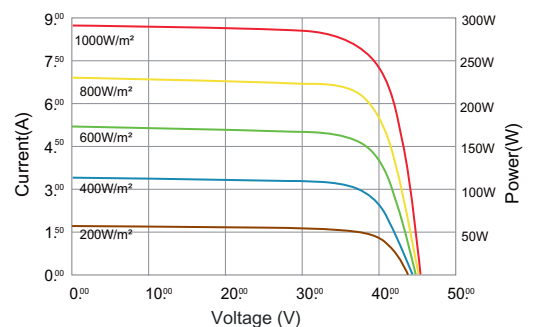
PHYSICAL CHARACTERISTICS



MECHANICAL DATA

Dimension	1956×992×40mm(77.01×39.06×1.57)
Cell Type	Mono Crystalline Silicon, 156mm × 156mm
Number of Cells	72 cells in series(12×6)
Weight	26.0kg±0.5kg
Front Glass	High Transparency Solar Glass4.0mm
Frame	Anodized Aluminium Alloy
Junction Box	TÜV: IP65 rated / IP67 rated,3/6 Diodes
Cable	Photovoltaic Technology 4.0mm ² ,1100mm,
Connector	MC-4 / DJ2011-4(SHIHE) Compatible

Current-Voltage & Power-Voltage Curve
JHX-290S72 (cell temperature:25°C)



TEMPERATURE RATINGS

Nominal Operating Cell Temperature(NOCT):	47°C(±2°C)
Temperature Coefficient of Pmax	-0.48%/°C
Temperature Coefficient of Voc	-0.34%/°C
Temperature Coefficient of Isc	0.05%/°C

NOCT:Irradiation 800W/m²,ambient temperature 20°C,wind speed 1m/s

PACKING CONFIGURATION

Container	20GP	40GP	40HC
Pieces per pallet	48/52	48/52	52/56
Pallets per container	5	11	11
Pieces per container	240/260	528/572	550/616