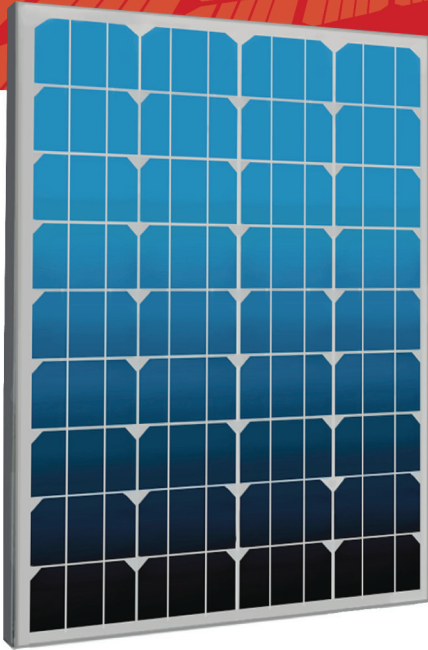


# GMA 36c-M Series 80-100W



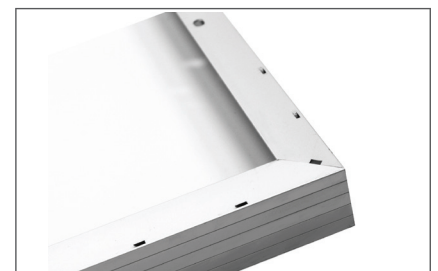
## POWERFUL PERFORMANCE FOR A CLEANER PLANET

- ◆ MANUFACTURED IN MONTREAL, CANADA
- ◆ 25 YEAR LINEAR POWER WARRANTY
- ◆ 12 YEAR WORKMANSHIP WARRANTY
- ◆ OUTSTANDING LOW LIGHT PERFORMANCE
- ◆ MC4 CONNECTORS
- ◆ POSITIVE TOLERANCE +0/3%

**GMASOLAR** introduces the new generation of solar modules. Providing more power by utilizing high efficiency solar cells. Ideal for off grid systems thanks to their robust design proving reliability and high quality performance in isolated areas.

**GMASOLAR** Reliability. All our solar modules are manufacture according to UL and IEC standards. Each module goes to a strict quality verification on through an EL testing process The EL tester works like a X-ray scanner that immediately exposes every possible hidden defect in the solar panel. This way you get a crystal clear picture of the good operation of the solar panel.

**GMASOLAR** Flexibility. Our solar modules are designed to offer worry free used in the harshest climates. Our frame allows installation in multiple configurations, making an easy, safe and faster installation in harshest climates. The water drain holes prevent frame breakage due to freezing temperatures.



**GMA 36c-M Series**  
**GMA80, GMA85, GMA90, GMA100**



**ELECTRICAL DATA**

Mechanical Data	GMA 80M	GMA 85M	GMA 90M	GMA 100M
Nominal Peak Power (Wp)	80 W	85 W	90 W	100 W
Nominal Voltage (Vmp)	17.2V DC	17.4V DC	17.2V DC	17.2V DC
Nominal Current (Imp)	4.65 A	4.89 A	5.23 A	5.81 A
Open Circuit Voltage (Voc)	21.6V DC	21.60V DC	21.6V DC	21.6V DC
Short Circuit Current (Isc)	5.14 A	5.42 A	5.87 A	6.61 A
Operating Temperature degC	-40 to + 85			
Maximum System Voltage	600 VDC (UL) 1000 VDC (IEC)			
STC: 1000 W/m <sup>2</sup> , 25°C, AM= 1.5				

**TEMPERATURE COEFFICIENTS**

**MECHANICAL DATA**

NOCT	45+/-2°C	Solar Cell	36 Monocrystalline 156mm x 156 mm
Voltage Temperature Coefficient (Voc)	-0.36%	Front Glass	3.2 Tempered
Current Temperature Coefficient (Isc)	+0.033%	Junction Box	Certified Junction Box
Power Temperature Coefficient (Pmpp)	+0.44%	Output Cables	1000 mm length with connectors
Minimum Power Tolerance	-0%~/+3%	Frame	Anodized Aluminum
NOCT: Nominal Operating Cell Temperature -40°C to + 95°		Weight	8kg
		Dimensions	890mm x 665mm x35 mm

**WARRANTY & CERTIFICATIONS**

Warranty 12 Year Workmanship, 12 Year 90%, 25 Year 80% Power Warranty

Certification UL 1730, IEC 61215, IEC 61730, CE, cETLus

Note: The specifications are subject to change without notice

