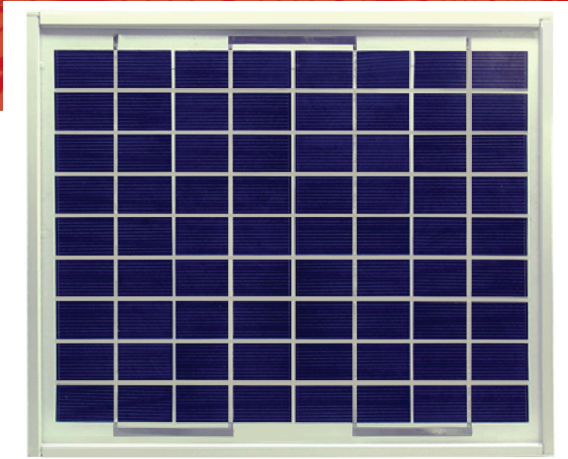


GMA 36-P Series 5-30W



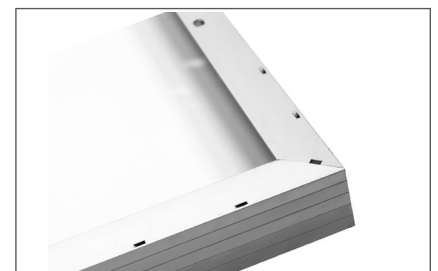
POWERFUL PERFORMANCE FOR A CLEANER PLANET

- ◆ MANUFACTURED IN MONTREAL, CANADA
- ◆ 25 YEAR LINEAR POWER WARRANTY
- ◆ 12 YEAR WORKMANSHIP WARRANTY
- ◆ OUTSTANDING LOW LIGHT PERFORMANCE
- ◆ MC4 CONNECTORS
- ◆ POSITIVE TOLERANCE +0/5%

GMASOLAR introduces the new generation of solar modules. Providing more power by utilizing high efficiency solar cells. Their outstanding performance on energy yield helps our customers to maximize returns on investment specially on grid tie applications.

GMASOLAR Reliability. All our solar modules are manufacture according to UL and IEC standards. Each module goes to a strict quality verification on through an EL testing process The EL tester works like a X-ray scanner that immediately exposes every possible hidden defect in the solar panel. This way you get a crystal clear picture of the good operation of the solar panel.

GMASOLAR Flexibility. Our solar modules are designed to offer worry free used in the harshest climates. For example, the strong and robust 45mm frame allows installation in multiple configurations, making an easy, safe and faster installation in harshest climates. The water drain holes prevent frame breakage due to freezing temperatures.



GMA-36-P Series
GMA5P, GMA10P, GMA20P, GMA30P



CHARACTERISTIC DATA

Solar cells per module	36
Type of solar cell	Poly-crystalline solar cells
Connections	Junction box

ELECTRICAL PARAMETERS

Mechanical Data		GMA 30-36	GMA 20-36	GMA 10-36	GMA 5-36
Power (max.)	Pp (Watts)	30W	20W	10W	5W
Voltage at maximum power point	Vp (Volts)	17.2V	17.2V	17.0V	16.8V
Current at maximum power point	Ip (Amps)	1.74A	1.16A	0.59A	0.3A
Open-circuit voltage	Voc (Volts)	21.6V	21.6V	21.4V	21.0V
Short-circuit current	Isc (Amps)	1.94A	1.29A	0.65A	0.34A

DIMENSIONS AND WEIGHTS

Length	mm (in)	775mm	550mm	335mm	290mm
		(30.5")	(21.6")	(13.1")	(11.4")
Width	mm (in)	345mm	345mm	280mm	280mm
		(13.5")	(13.5")	(11.0")	(11.0")
Weight	kg (lbs)	3.1 kg	2.5 kg	1.20 kg	1.05 kg
		(6.2 lbs)	(5.0 lbs)	(3.3 lbs)	(2.3 lbs)
Area	m ² (ft ²)	0.26 m ²	0.18 m ²	0.09 m ²	0.08 m ²
		(2.7ft ²)	(1.9 ft ²)	(0.9ft ²)	(0.9ft ²)

CELL TEMPERATURE COEFFICIENTS

Power	Tc(Pp)	-0.64W /°C
Open-circuit voltage	Tc(Voc)	-0.08V /°C
Short circuit current	Tc(Isc)	+0.0027 /°C

LIMITS

Maximum system voltage	100V DC
Operating module temperature	-40 to +90°C
Wind resistance	Wind speed 192km/h

WARRANTY & CERTIFICATIONS

Warranty	12 Year Workmanship, 12 Year 90%, 25 Year 80% Power Warranty
Certifications	IEC 61215, IEC 61730, CE

Note: The specifications are subject to change without notice

