

# GMA 36-P Series 120-150W



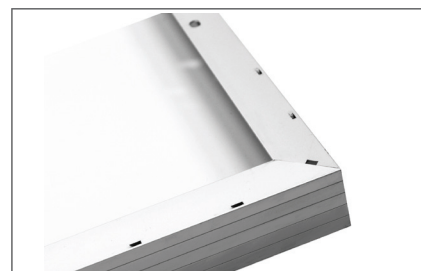
## POWERFUL PERFORMANCE FOR A CLEANER PLANET

- ◆ MANUFACTURED IN MONTREAL, CANADA
- ◆ 25 YEAR LINEAR POWER WARRANTY
- ◆ 12 YEAR WORKMANSHIP WARRANTY
- ◆ OUTSTANDING LOW LIGHT PERFORMANCE
- ◆ MC4 CONNECTORS
- ◆ POSITIVE TOLERANCE +0/3%

**GMASOLAR** introduces the new generation of solar modules. Providing more power by utilizing high efficiency solar cells. Ideal for off grid systems thanks to their robust design proving reliability and high quality performance in isolated areas.

**GMASOLAR** Reliability. All our solar modules are manufacture according to UL and IEC standards. Each module goes to a strict quality verification on through an EL testing process The EL tester works like a X-ray scanner that immediately exposes every possible hidden defect in the solar panel. This way you get a crystal clear picture of the good operation of the solar panel.

**GMASOLAR** Flexibility. Our solar modules are designed to offer worry free used in the harshest climates. Our frame allows installation in multiple configurations, making an easy, safe and faster installation in harshest climates. The water drain holes prevent frame breakage due to freezing temperatures.



**GMA 36-P Series**  
**GMA120P, GMA130P, GMA135P,**  
**GMA140P, GMA145P, GMA150P**



**ELECTRICAL DATA**

Module Type		GMA 120-36	GMA 130-36	GMA 135-36	GMA 140-36	GMA 145-36	GMA 150-36
Power (max.)	Pp (Watts)	120W	130W	135W	140W	145W	150W
Voltage at maximum power point	Vp (Volts)	17.4V	17.6V	17.2 V	18.2V	17.2V	18.4V
Current at maximum power point	Ip (Amps)	6.90A	7.39A	7.84 A	7.69A	8.43A	8.15A
Open-circuit voltage	Voc (Volts)	22.0V	22.0V	21.6 V	22.4V	21.6V	22.6V
Short-circuit current	Isc (Amps)	8.03A	8.21A	8.22 A	8.22A	8.51A	8.87A
Operating Temperature degC		-40 to +85					
Maximum System Voltage		600 VDC (UL) 1000 VDC (IEC)					
STC: 1000 W/m2 , 25°C, AM= 1.5							

**TEMPERATURE COEFFICIENTS**

NOCT	45+/-2°C
Voltage Temperature Coefficient (Voc)	-0.36%
Current Temperature Coefficient (Isc)	+0.033%
Power Temperature Coefficient (Pmpp)	+0.48%
Minimum Power Tolerance	-0/+3%
NOCT: Normal Operating cell Temp.	

**MECHANICAL DATA**

Solar Cell	Polycrystalline 156 mm x 156 mm
Front Glass	3.2 Tempered
Junction Box	Certified Junction Box
Output Cables	1000 mm length with connectors
Frame	Anodized Aluminum
Weight	12kg
Dimensions	1483mm x 665mm x 35 mm

**WARRANTY & CERTIFICATIONS**

Warranty 12 Year Workmanship, 12 Year 90%, 25 Year 80% Power Warranty

Certifications UL 1730, IEC 61215, IEC 61730, CE, cETLus

Note: The specifications are subject to change without notice

