

series 240-260W



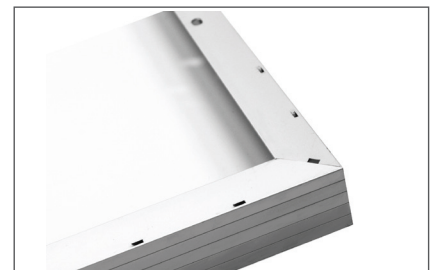
POWERFUL PERFORMANCE FOR A CLEANER PLANET

- ◆ MANUFACTURED IN MONTREAL, CANADA
- ◆ 25 YEAR LINEAR POWER WARRANTY
- ◆ 12 YEAR WORKMANSHIP WARRANTY
- ◆ OUTSTANDING LOW LIGHT PERFORMANCE
- ◆ MC4 CONNECTORS
- ◆ POSITIVE TOLERANCE +0/5%

GMASOLAR introduces the new generation of solar modules. Providing more power by utilizing high efficiency solar cells. Their outstanding performance on energy yield helps our customers to maximize returns on investment specially on grid tie applications.

GMASOLAR Reliability. All our solar modules are manufacture according to UL and IEC standards. Each module goes to a strict quality verification on through an EL testing process The EL tester works like a X-ray scanner that immediately exposes every possible hidden defect in the solar panel. This way you get a crystal clear picture of the good operation of the solar panel.

GMASOLAR Flexibility. Our solar modules are designed to offer worry free used in the harshest climates. For example, the strong and robust 45mm frame allows installation in multiple configurations, making an easy, safe and faster installation in harshest climates. The water drain holes prevent frame breakage due to freezing temperatures.



GMA 60-P Series
GMA240, GMA245, GMA250, GMA255, GMA260



ELECTRICAL DATA

Module Type	GMA 240-60	GMA 245-60	GMA 250-60	GMA 255-60	GMA 260-60
Nominal Peak Power (Wp)	240 W	245 W	250 W	255 W	260 W
Nominal Voltage (Vmp)	30.1 V	30.3 V	30.5 V	30.7 V	30.9 V
Nominal Current (Imp)	8.00 A	8.09 A	8.20 A	8.31 A	8.42 A
Open Circuit Voltage (Voc)	37.4 V	37.5 V	37.6 V	37.7 V	37.8 V
Short Circuit Current (Isc)	8.67 A	8.71 A	8.87 A	8.99 A	9.03 A
Module Efficiency (%)	14.60%	15.00%	15.40%	15.70%	16.00%
Maximum System Voltage	600 VDC (UL) 1000 VDC (IEC)				
STC: 1000 W/m ² , 25°C, AM= 1.5					

TEMPERATURE COEFFICIENTS

NOCT	45+/-2°C
Voltage Temperature Coefficient (Voc)	-0.36%
Current Temperature Coefficient (Isc)	+0.033%
Power Temperature Coefficient (Pmpp)	+0.48%
Minimum Power Tolerance	-0/+5%

NOCT: Normal Operating cell Temp.

MECHANICAL DATA

Solar Cell	Polycrystalline 156 mm x 156 mm
Front Glass	3.2 Tempered
Junction Box	Certified Junction Box
Output Cables	1000 mm length with connectors
Frame	Anodized Aluminum
Weight	20kg
Dimensions	1640 mm x 992 x 35 mm

WARRANTY & CERTIFICATIONS

Warranty 12 Year Workmanship, 12 Year 90%, 25 Year 80% Power Warranty
 Certifications UL 1730, IEC 61215, IEC 61730, CE, cETLus

Note: The specifications are subject to change without notice

