



SOLAR



BEM 255Wp

-  25 year linear performance warranty
-  100 % electroluminescence inspection
-  Guaranteed positive power tolerance
-  Maximum 5400 Pa snow load
-  IP67 junction box available, long-term weather endurance
-  Innovative solution: anti-reflective coating for high sunlight absorption
-  Potential Induced Degradation FREE
-  High quality components
-  packing system to avoid micro cracks

IRRADIANCE DEPENDENCE				
[W/m ²]	1000	800	600	400
Isc	0%	-19,6%	-39,5%	-59,2%
Voc	0%	-1,38%	-3,05%	-5,90%

STC 1000 W/m², 25 °C, AM 1,5

ELECTRICAL CHARACTERISTICS

Maximum power [Pmax]	255
Cells	Monocrystalline Si
Size	156 x 156 mm
Nr of cells	60
Short circuit current [Isc]	8,9
Open circuit voltage [Voc]	38,1
Maximum power current [Imax]	8,38
Maximum power voltage [Vmax]	30,45
Module efficiency	15,70 %
Maximum system voltage	1000 V DC
Tolerance	0 +4,99
Temperature coefficient current TcI	+0,03 %/°C
Temperature coefficient voltage TcV	-0,32 %/°C
Power temperature coefficient TcP	-0,39 %/°C
NOCT(800 W/m ² , 20°C, AM 1.5, 1m/s)	43 °C

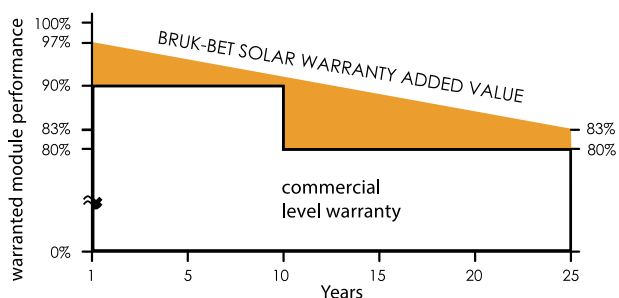
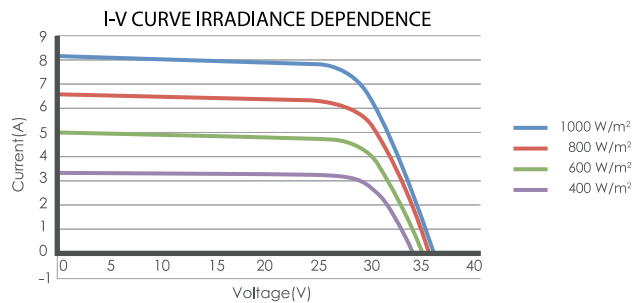
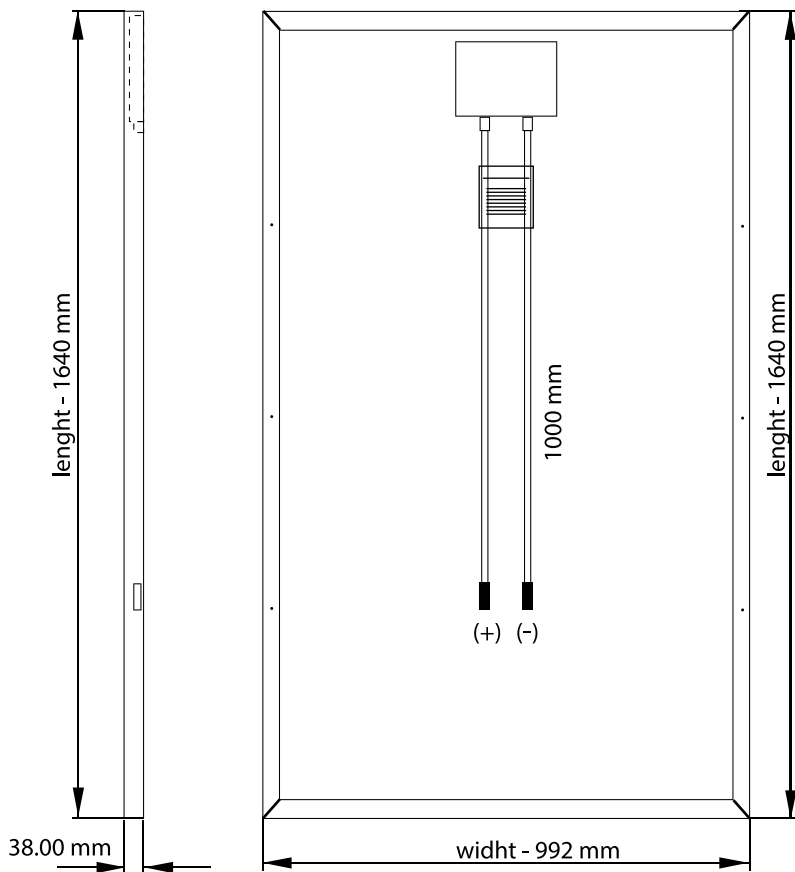
QUALIFICATION TEST PARAMETERS

Maximum load	IEC 5400 Pa
Application class	A

PHYSICAL CHARACTERISTICS

Length	1640 mm
Width	992 mm
Thickness	38 mm
Weight	18 kg
Junction box	IP 65





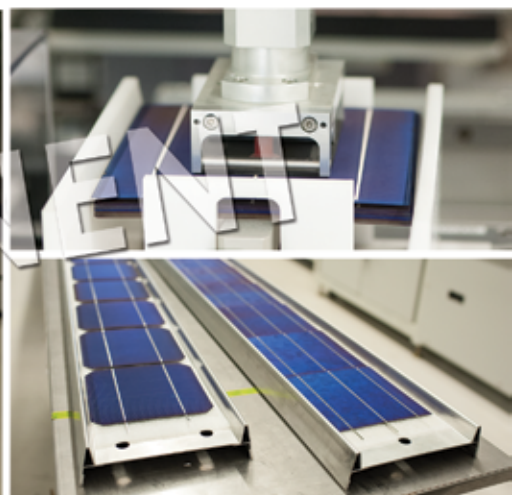
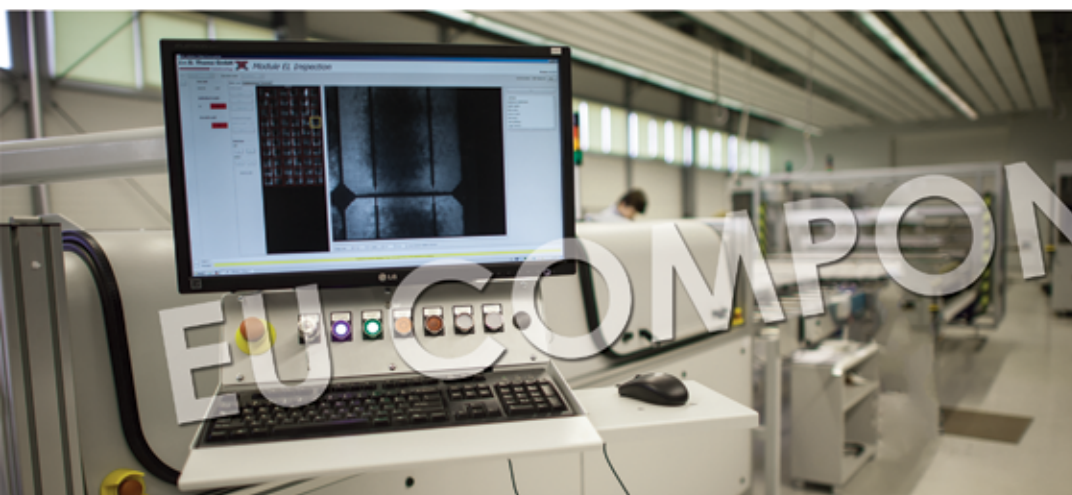
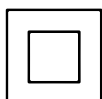
AVAILABLE COLORS

TERRACOTTA

WHITE

TRANSPARENT

BLACK



Bruk-Bet Sp. z o.o. Headquarters:
 Nieciecza 199,33-240 Żabno
 tel. + 48 14 637 77 77
 fax + 48 14 637 77 78

Photovoltaic Module Manufacturing Plant:
 ul. Mrożna 8, 33-102 Tarnów
 tel. +48 14 632 08 20
 fax +48 14 632 08 21

www.solar.bruk-bet.pl, e-mail: solar@bruk-bet.pl