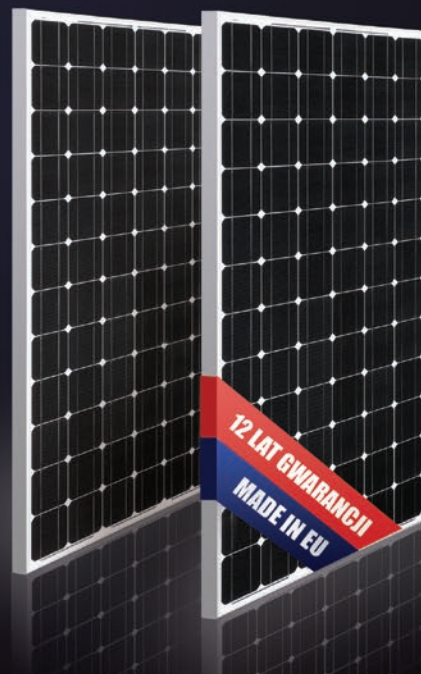



BRUK-BET[®] SOLAR

BEM 315Wp



-  25 year linear performance warranty
-  100 % electroluminescence inspection
-  Guaranteed positive power tolerance
-  Maximum 5400 Pa snow load
-  IP67 junction box available, long-term weather endurance
-  Innovative solution: anti-reflective coating for high sunlight absorption
-  Potential Induced Degradation FREE
-  High quality components
-  packing system to avoid micro cracks

IRRADIANCE DEPENDENCE

[W/m ²]	1000	800	600	400
Isc	0%	-19,6%	-39,5%	-59,2%
Voc	0%	-1,38%	-3,05%	-5,90%

STC 1000 W/m², 25 °C, AM 1,5

ELECTRICAL CHARACTERISTICS

Maximum power [Pmax]	315
Cells	Monocrystalline Si
Size	156 x 156 mm
Nr of cells	72
Short circuit current [Isc]	9,15
Open circuit voltage [Voc]	45,85
Maximum power current [Imax]	8,60
Maximum power voltage [Vmax]	36, 65
Module efficiency	16, 2 %
Maximum system voltage	1000 V DC
Tolerance	0 +4,99
Temperature coefficient current TcI	+0,03 %/°C
Temperature coefficient voltage TcV	-0,32 %/°C
Power temperature coefficient TcP	-0,39 %/°C
NOCT(800 W/m ² , 20°C, AM 1.5, 1m/s)	43 °C

QUALIFICATION TEST PARAMETERS

Maximum load	IEC 5400 Pa
Application class	A

PHYSICAL CHARACTERISTICS

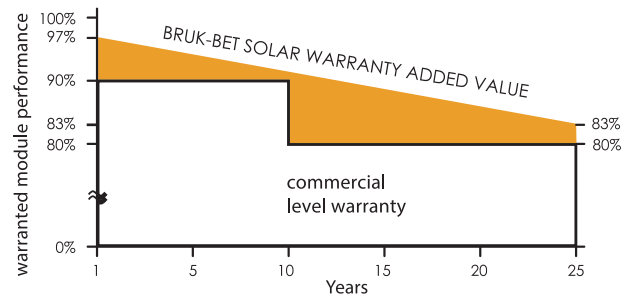
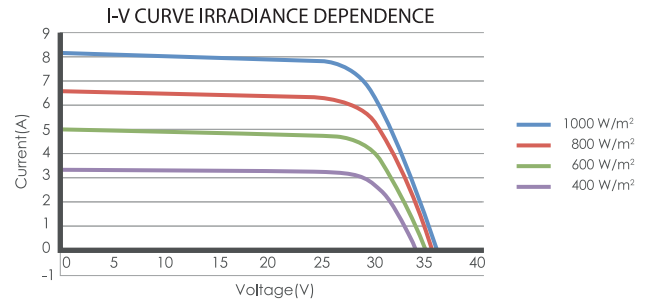
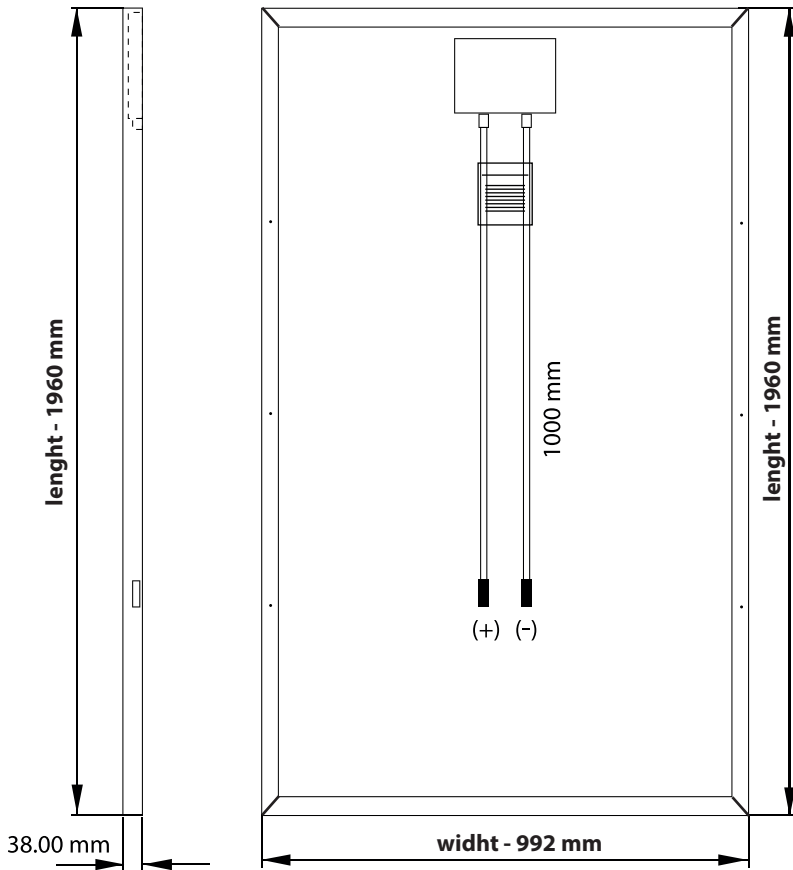
Length	1960 mm
Width	992 mm
Thickness	38 mm
Weight	22 kg
Junction box	IP 65




Salt water mist
resistance certificate


Ammonia
resistance certificate


Fire resistance certificate



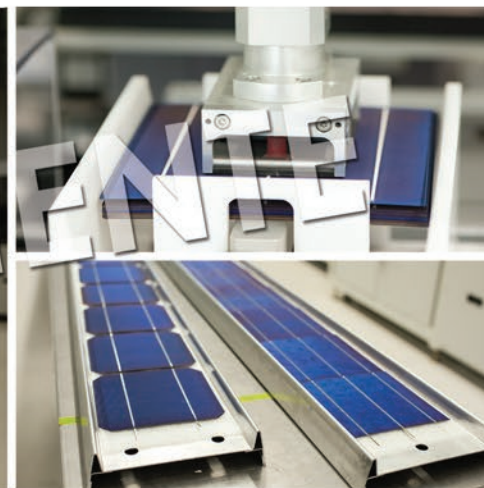
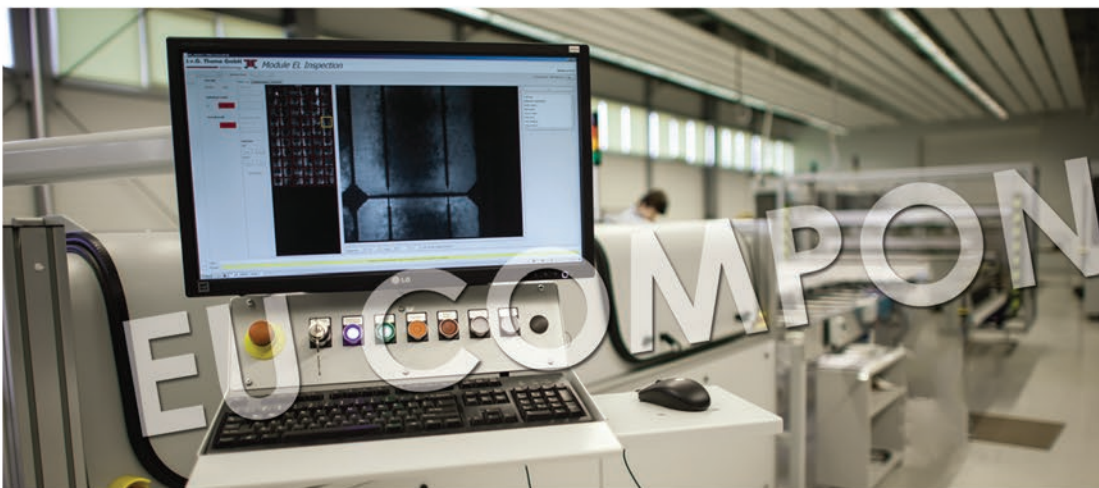
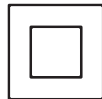
AVAILABLE COLORS

TERRACOTTA

WHITE

TRANSPARENT

BLACK



Bruk-Bet Sp. z o.o. Headquarters:
 Nieciecza 199,33-240 Żabno
 tel. + 48 14 637 77 77
 fax + 48 14 637 77 78

Photovoltaic Module Manufacturing Plant:
 ul. Mroźna 8, 33-102 Tarnów
 tel. +48 14 632 08 20
 fax +48 14 632 08 21

www.solar.bruk-bet.pl, e-mail: solar@bruk-bet.pl