



TENKA[®] solar

PHOTOVOLTAIC SYSTEMS

Mono CRYSTALLINE MODULE 280-310 Watt

KEY FEATURES



Our solar cells offer high conversion efficiency to ensure the highest quality

Our high performing modules have an industry low tolerance of +5% (optional)

The modules can withstand high wind-pressure, snow loads and extreme temperatures

Passed IEC 5400 Pa mechanical loading test

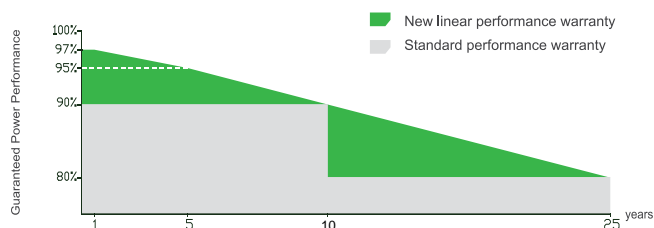
QUALITY & SAFETY

Industry leading power output warranty

(10 years/90%, 25 years/80%)

10-year warranty on materials & workmanship (optional)

Premium Performance Warranty



* Based on customer requirements and contract terms

ISO9001:2008-ISO14001:2004-OHSAS18001 certified factory
IEC61215-IEC61730 certified products



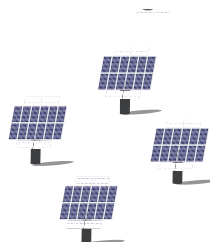
APPLICATIONS



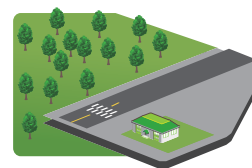
On-grid residential roof-tops



On-grid commercial/
industrial roof-tops

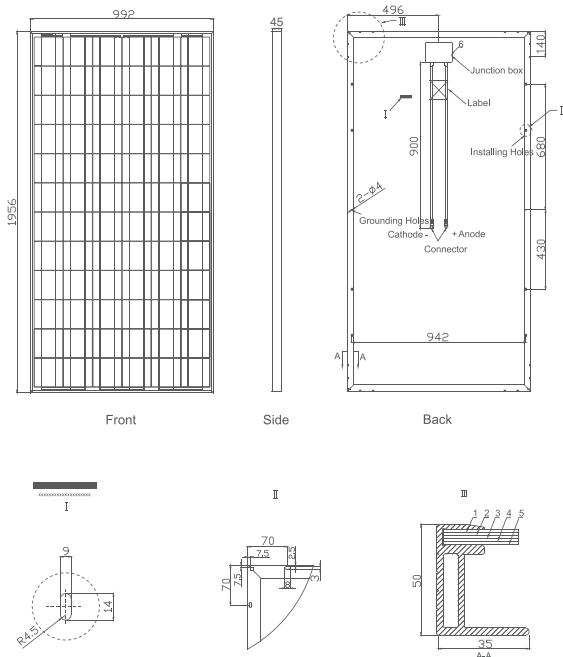


Solar power plants



Off-grid systems

Engineering Drawings



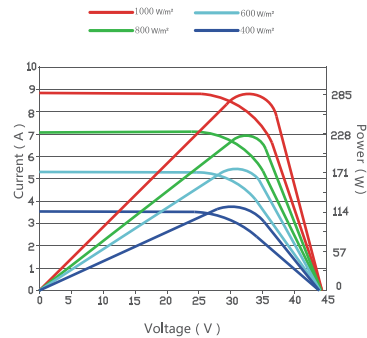
Packaging Configuration

(Two boxes = One pallet)

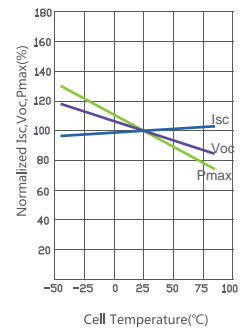
23pcs/box, 46pcs/pallet, 506pcs/40'HQ Container

Electrical Performance & Temperature Dependence

Current-Voltage & Power-Voltage Curves (285W)



Temperature Dependence of Isc, Voc, Pmax



Mechanical Characteristics

Cell Type	Mono-crystalline 156×156mm (6 inch)
No. of cells	72 (6×12)
Dimensions	1956×992×45mm (77.01×39.06×1.77 inch)
Weight	27.0 kg (59.5 lbs.)
Front Glass	3.2mm, High Transmission, Low Iron, Tempered Glass
Frame	Anodized Aluminium Alloy
Junction Box	IP65 Rated
Output Cables	TÜV 1×4.0mm² / UL 12AWG, Length:900mm

SPECIFICATIONS

Module Type	TKA280W-72M	TKA290W-72M	TKA295W-72M	TKA300W-72M	TKA305W-72M	TKA310W-72M
Maximum Power at STC(Pmax)	280Wp	290Wp	295Wp	300Wp	305Wp	310Wp
Maximum Power Voltage (Vmp)	36.2V	36.2V	36.5V	36.5V	36.7V	37.2V
Maximum Power Current (Imp)	7.73A	8.01A	8.04A	8.22A	8.31A	8.33A
Open-circuit Voltage (Voc)	43.4V	43.4V	43.8V	43.8V	45.5V	46.1V
Short-circuit Current (Isc)	8.34A	8.65A	8.84A	9.04A	8.98A	9.00A
Module Efficiency(%)	14.43%	14.95%	15.20%	15.46%	15.72%	15.98%
Operating Temperature(°C)	-40°C ~ +85°C					
Maximum system voltage	1000V (IEC) DC					
Maximum series fuse rating	15A					
Power tolerance	+5% (optional)					
Temperature coefficients of Pmax	-0.45%/°C					
Temperature coefficients of Voc	-0.27%/°C					
Temperature coefficients of Isc	0.05%/°C					
Nominal operating cell temperature (NOCT)	45±2°C					

STC: Irradiance 1000W/m²



Module Temperature 25°C



AM=1.5

* Power measurement tolerance: + 5%