



KEY FEATURES



Our solar cells offer high conversion efficiency to ensure the highest quality

Our high performing modules have an industry low tolerance of +5%

The modules can withstand high wind-pressure, snow loads and extreme temperatures

Passed IEC 5400 Pa mechanical loading test

QUALITY & SAFETY

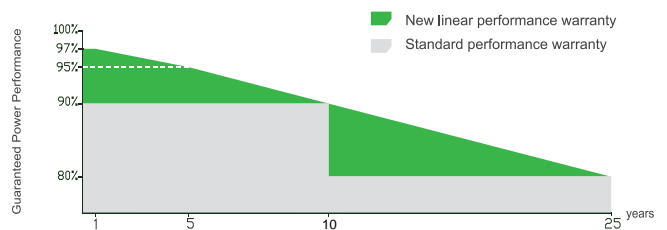
Industry leading power output warranty
(10 years/90%, 25 years/80%)

10-year warranty on product materials and processing technology

ISO 9001:2008 (Quality Management System) certified factory

IEC61215、IEC61730 certified products

Premium Performance Warranty



* Based on customer requirements and contract terms

ISO9001:2008、ISO14001:2004、OHSAS18001 certified factory
IEC61215、IEC61730 certified products



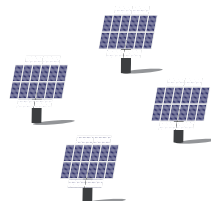
APPLICATIONS



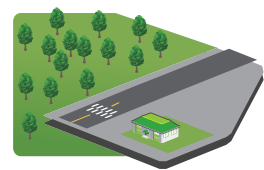
On-grid residential roof-tops



On-grid commercial/
industrial roof-tops

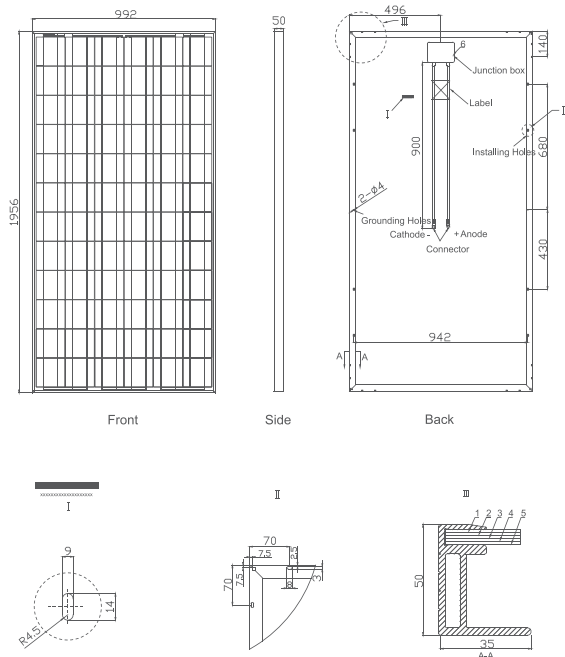


Solar power plants



Off-grid systems

Engineering Drawings



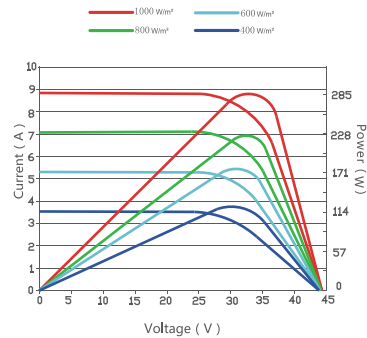
Packaging Configuration

(Two boxes = One pallet)

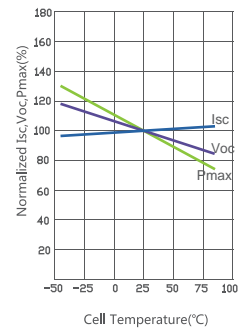
23pcs/box,46pcs/pallet,506Fpcs/40'HQ'Container

Electrical Performance & Temperature Dependence

Current-Voltage & Power-Voltage Curves (285W)



Temperature Dependence of Isc, Voc, Pmax



Mechanical Characteristics

Cell Type Poly-crystalline 156×156mm (6 inch)

No.of cells 72 (6×12)

Dimensions 1956×992×45mm (77.01×39.06×1.77 inch)

Weight 27.0 kg (59.5 lbs.)

Front Glass 3.2mm, High Transmission, Low Iron, Tempered Glass

Frame Anodized Aluminium Alloy

Junction Box IP65 Rated

Output Cables TÜV 1×4.0mm²/ UL 12AWG , Length:900mm

SPECIFICATIONS

Module Type	TKA260W-72P	TKA265W-72P	TKA270W-72P	TKA275W-72P
Maximum Power at STC(Pmax)	260Wp	265Wp	270Wp	275Wp
Maximum Power Voltage (Vmp)	35.0V	35.5V	35.5V	35.5V
Maximum Power Current (Imp)	7.43A	7.46A	7.61A	7.75A
Open-circuit Voltage (Voc)	43.4V	44.0V	44.0V	44.0V
Short-circuit Current (Isc)	7.95A	8.06A	8.14A	8.30A
Module Efficiency(%)	13.40%	13.66%	13.92%	14.17%
Operating Temperature(°C)	-40°C ~ +85°C			
Maximum system voltage	1000V (IEC) DC			
Maximum series fuse rating	15A			
Power tolerance	+5% (optional)			
Temperature coefficients of Pmax	-0.45%/°C			
Temperature coefficients of Voc	-0.27%/°C			
Temperature coefficients of Isc	0.05%/°C			
Nominal operating cell temperature (NOCT)	45±2°C			

STC: Irradiance 1000W/m²



Module Temperature 25°C



AM=1.5

* Power measurement tolerance: +5%