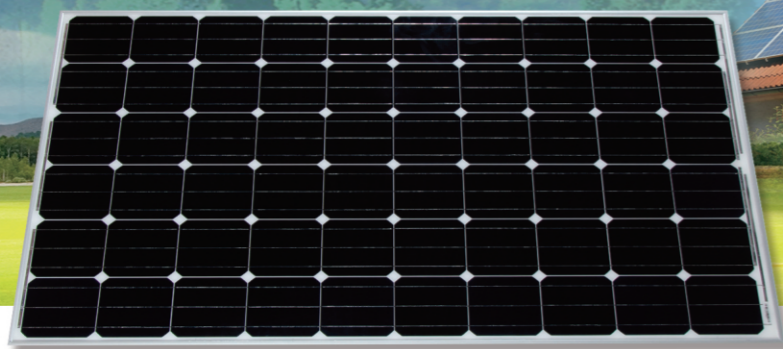


# 单晶太阳能电池组件--60片串

## Mono Crystalline Solar Module --6inch\*60



**Cell efficiency**  
电池片转化率 > 17.6%

**10 Year**  
Material & workmanship warranty  
10年的材料与工艺保修

**25 Year**  
Linear power output warranty  
25年的线性质保

**2 EL**  
EL Double Inspection  
2次EL测试

**PA**  
Good temperature coefficient enables  
higher output in high temperature regions  
低辐射度高性能保证

**PA**  
Certified to bear 2,400Pa wind load and  
5,400Pa snow load  
5400帕雪压载荷, 2400帕风压载荷

**TUV / CE / PID**

- IEC / EN 61215:2005 • IEC 61730-1:2004 / EN 61730-1:2007
- IEC 61730-2:2004 / EN 61730-2:2007 • The fire test (MST 23 of IEC 61730-2)

Electrical characteristics at Standard Test Conditions (STC) 性能参数				
Model	SA260-60M	SA255-60M	SA250-60M	SA245-60M
Max Power - Pmpp (W) 最大功率 (W)	260	255	250	245
Positive power tolerance (%) 公差 (%)	±3%	±3%	±3%	±3%
Open Circuit Voltage - Voc (V) 开路电压 (V)	38.2	37.8	37.4	37.2
Short Circuit Current - Isc (A) 短路电流 (A)	9.0	8.9	8.8	8.7
Max Power Voltage-Vmpp (V) 最大工作电压 (V)	31.8	31.5	31.2	31
Max Power Current - Imp (A) 最大工作电流 (A)	8.2	8.1	8	7.9
Module Efficiency 组件转化效率	15.6	15.3	15.0	14.7

Electrical data relates to standard test conditions (STC): irradiance 1000 W/m<sup>2</sup>; AM 1.5; cell temperature 25°C measuring uncertainty of power is within ±3%.  
Certified in accordance with IEC61215, IEC61730-1/2

### Electrical Characteristics at Normal Operating Cell Temperature (NOCT) 电性能参数

Model				
Max Power - Pmpp (W) 峰值功率 (W)	190	187	183	179
Max Power Voltage - Vmpp (V) 最大工作电压 (V)	29.3	29.0	28.8	28.6
Max Power Current - Imp (A) 最大工作电流 (A)	6.5	6.4	6.4	6.3
Open Circuit Voltage - Voc (V) 开路电压 (V)	35.7	35.4	35.1	34.9
Short Circuit Current - Isc (A) 闭路电流 (A)	6.9	6.9	6.8	6.7

Electrical data relates to normal operating cell temperature (NOCT): irradiance 800 W/m<sup>2</sup>; wind speed 1 m/s; cell temperature 45 °C; ambient temperature 20 °C measuring uncertainty of power is within ±3%

### Temperature Characteristics 温度系数

Operating Temperature 组件温度工作范围	-40°C~+90°C
Storage Temperature 组件存储温度范围	-40°C~+90°C
Temp.coefficient Voc 开路电压温度系数	0.35%±0.02°C
Temp.coefficient Isc 短路电流温度系数	+0.04%±0.0015°C
Temp.coefficient Power 功率温度系数	-0.5%±0.05°C
Nominal operating cell temperature 电池片额定工作温度	47°C±2°C

### Maximum Ratings 最大额定值

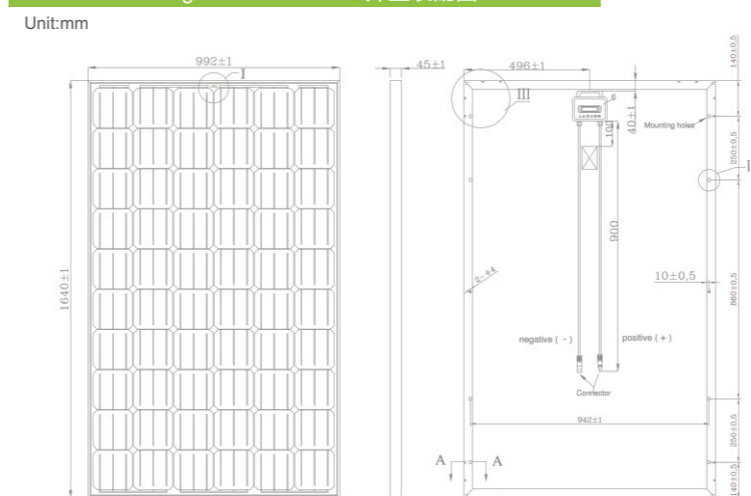
Maximum system voltage (V) 最大系统电压	1000V
Series fuse rating (A) 保险丝最大熔断值	15A
Reverse current overload (A) 反向电流过载	25A

### Mechanical Characteristics 机械性能参数

Cell Type 电池片种类	Mono Crystalline Cell 单晶电池片 156*156mm
Cell Shape 形状	Rectangular 倒角正方形
No.of Cell 电池片数量	60 (6*10)
Dimensions 外形尺寸	1640×992×35mm (Length/长*Width/宽*Depth/高)
Weight 重量	18kg
Frame 边框	Anodized aluminum profile 铝合金型材

Front glass 玻璃	Low iron tempered glass/3.2 mm 低铁超白钢化玻璃
Cell Encapsulation 电池片封装	EVA (Ethylene-Vinyl-Acetate) EVA胶膜
Back Sheet 背板	TPE Composite film TPE复合薄膜
Junction Box 接线盒	Rated current 额定电流 ≥ 12A, IP ≥ 65, TUV
Cable 线	Length 900 mm, 1 × 4 mm <sup>2</sup>
Connector 连接器	MC 4

### Module Drawing With Measures 外型装配图



### Packaging 包装信息

Container 20' /20尺柜	350pcs
Container 40' /40尺柜	676pcs
Container 40'HC /40尺高柜	780pcs

