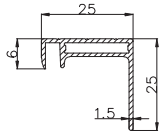


# 160 Watt

## MONO CRYSTALLINE MODULE 72x(156mmx90mm)

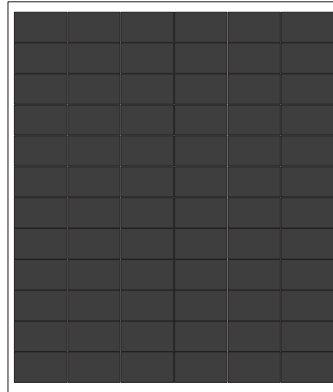
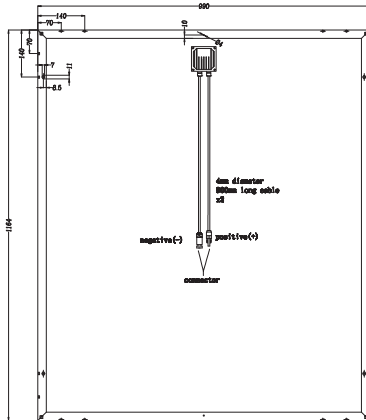
www.risenenergy.com  
THE POWER OF RISING VALUE



### Electrical Characteristics

Model	Pm(Wp)	Tolerance	Vm(V)	Im(A)	Voc(V)	Isc(A)
SYP160M	160W	+3%	35.2	4.55	43.9	5.06

Valued at STC (AM 1.5, 1000W/m<sup>2</sup>, 25°C)



### Specifications

- Number of mono crystalline solar cell 72pcsx(156mmX90mm)
- Aluminum frame, dimension 990x1164x25mm
- Weight 12.9kg
- Temperature coefficient of VOC( $\beta$ ) = -0.39%/°C
- Temperature coefficient of ISC( $\alpha$ ) = +0.033%/°C
- Temperature coefficient of Pmax = -0.44%/°C
- Bypass diodes to reduce loss in partial shadow
- IP65
- CE Standard
- Performance test data for each module