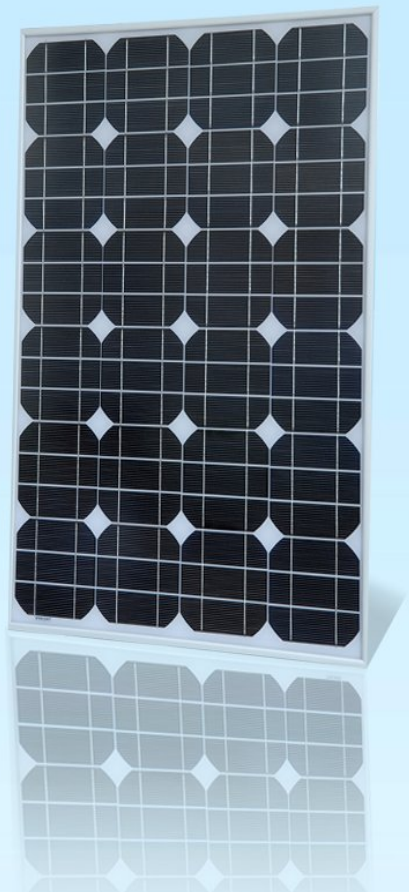


Photovoltaic Module Monocrystalline

GS-60M



Quality and Safety

- *Rigorous quality control meeting the highest international standards
- *High-transmissivity low-iron tempered glass, strong aluminium frame Using UV-resistant silicon
- *Safety Class II,conformity to CE

Features

- *Aesthetic appearance with excellent efficiency based on innovative photovoltaic technologies
- *High quality,strong aluminium frame,passing mechanical load testing 5400 Pa and wind pressure 2400Pa

Warranties

- *10 years limited product warranty
- *15 years at90% of the minimal rated power output
- *25 years at80% of the minimal rated power output

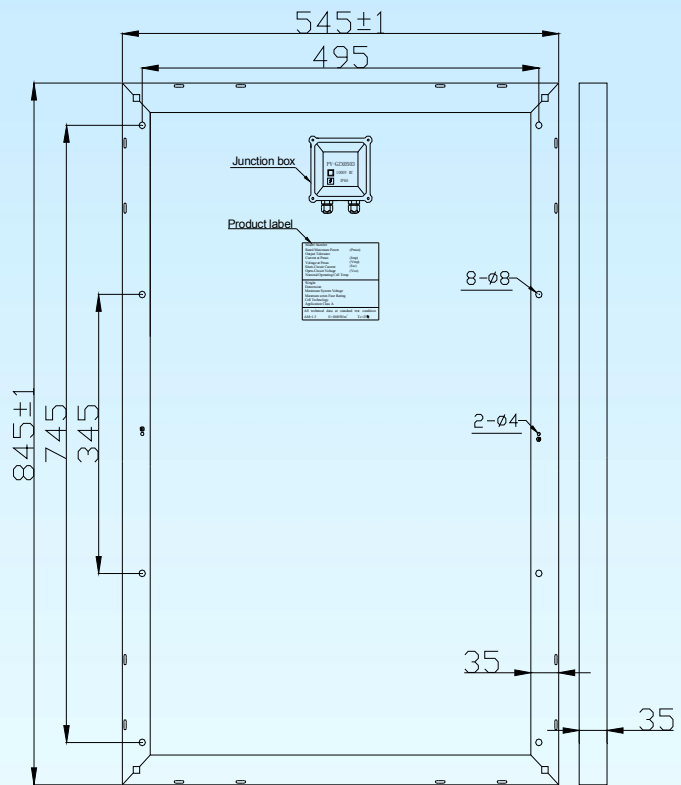
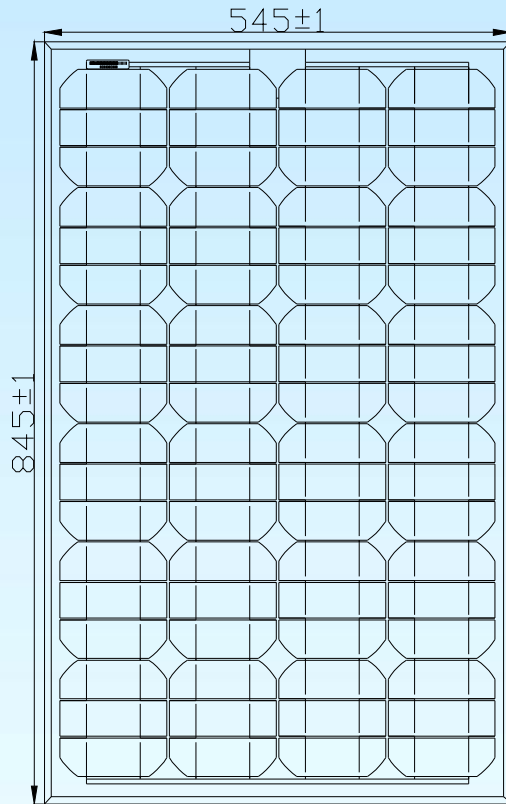
Certificates



Electrical Characteristics

| Model | GS-55M | GS-60M | GS-65M |
|---|----------|--------|--------|
| Maximum Power at STC (P _{max}) | 55W | 60W | 65W |
| Optimum Operating Voltage (V _{mp}) | 17.2V | 17.6V | 17.8V |
| Optimum Operating Current (I _{mp}) | 3.198A | 3.410A | 3.652A |
| Open-Circuit Voltage (V _{oc}) | 21.8V | 22.00V | 22.32V |
| Short-Circuit Current (I _{sc}) | 3.409A | 3.685A | 3.935A |
| Solar Cell Efficiency (%) | 15.4 | 17.00 | 17.81 |
| Solar Module Efficiency (%) | 11.94 | 13.02 | 14.11 |
| Operating Temperature | -40to85℃ | | |
| Maximum System Voltage | DC1000 | | |
| Maximum Series Fuse Rating | 15A | | |
| Power Tolerance | +/-3% | | |
| STC:Irradiance 1000W/m ² ,Modules Temperature 25℃,AM=1.5 | | | |

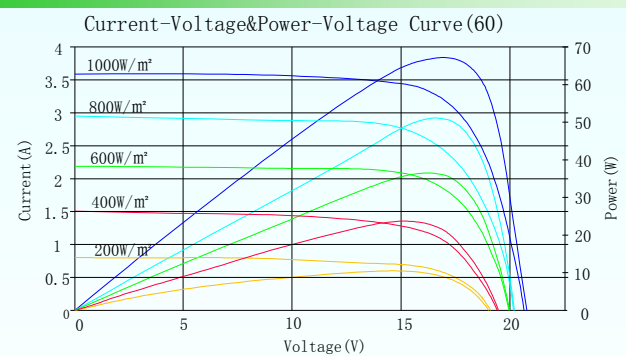
Engineering Drawings



Mechanical Characteristics

| | |
|---------------|--------------------------|
| Solar cell | Mono-Crystalline 125*1/3 |
| No. of cells | 72 (4×18) |
| Dimensions | 845mm*545mm*30mm |
| Weight | 5.6kg |
| Front glass | 3.2mm tempered glass |
| Frame | Anodized aluminium alloy |
| Junction box | PV-LH0801 |
| Connector | / |
| Output cables | / |
| 1*20' | / |
| 1*40' | / |
| 1*40'HQ | / |

IV-Curves



Temperature Coefficient

| | |
|---|------------|
| Nominal Operating Cell Temperature (NOCT) | 47°C ± 2°C |
| Temperature Coefficient of Pmax | -0.47%/K |
| Temperature Coefficient of VOC | -0.346%/K |
| Temperature Coefficient of ISC | +0.036%/K |