

Photovoltaic Module Monocrystalline

GS-100M



Quality and Safety

- *Rigorous quality control meeting the highest international standards
- *High-transmissivity low-iron tempered glass, strong aluminium frame Using UV-resistant silicon
- *Safety Class II,conformity to CE

Features

- *Aesthetic appearance with excellent efficiency based on innovative photovoltaic technologies
- *High quality,strong aluminium frame,passing mechanical load testing 5400 Pa and wind pressure 2400Pa

Warranties

- *10 years limited product warranty
- *15 years at90% of the minimal rated power output
- *25 years at80% of the minimal rated power output

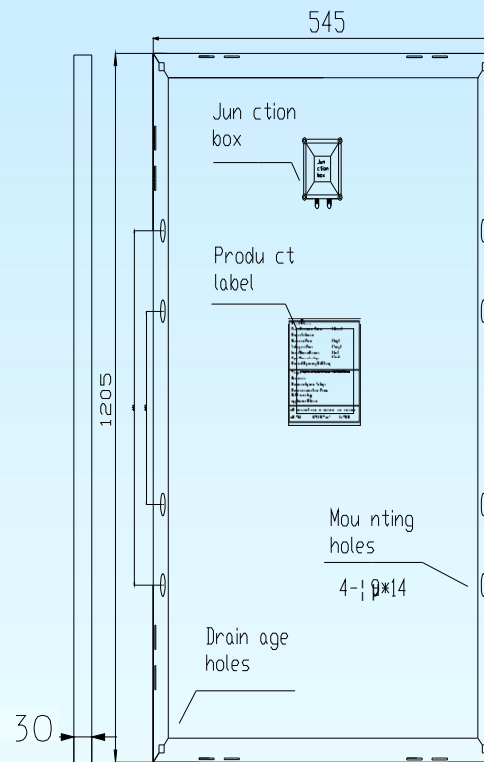
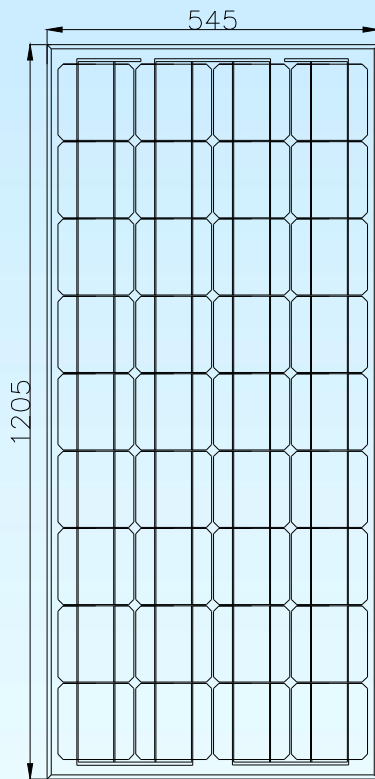
Certificates



Electrical Characteristics

Model	GS-95M	GS-100M
Maximum Power at STC (P _{max})	95W	100W
Optimum Operating Voltage (V _{mp})	17.5V	17.2V
Optimum Operating Current (I _{mp})	5.429A	5.820A
Open-Circuit Voltage (V _{oc})	21.60V	21.80V
Short-Circuit Current (I _{sc})	5.943A	6.180A
Solar Cell Efficiency (%)	16.4	17.25
Solar Module Efficiency (%)	14.18	14.93
Operating Temperature		-40to85°C
Maximum System Voltage		DC1000
Maximum Series Fuse Rating		15A
Power Tolerance		+/-3%
STC:Irradiance 1000W/m ² ,Modules Temperature 25°C,AM=1.5		

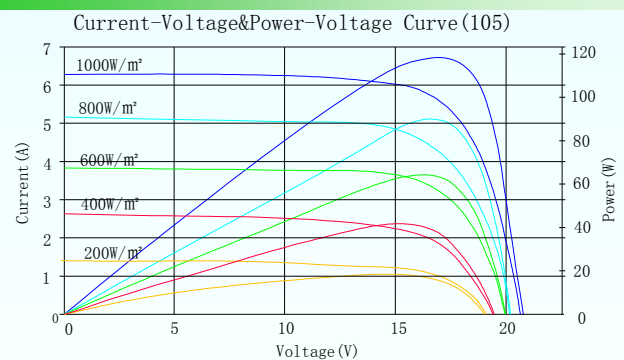
Engineering Drawings



Mechanical Characteristics

Solar cell	Mono-Crystalline 125*125mm
No.of cells	36(4×9)
Dimensions	545mm*1205mm*30mm
Weight	7.8kg
Front glass	3.2mm tempered glass
Frame	Anodized aluminium alloy
Junction box	PV-LH0808
Connector	/
Output cables	/
1*20'	/
1*40'	/
1*40'HQ	/

IV-Curves



Temperature Coefficient

Nominal Operating Cell Temperature (NOCT)	47°C+/-2°C
Temperature Coefficient of Pmax	-0.47%/K
Temperature Coefficient of VOC	-0.351%/K
Temperature Coefficient of ISC	+0.035%/K