

120-150 Watt

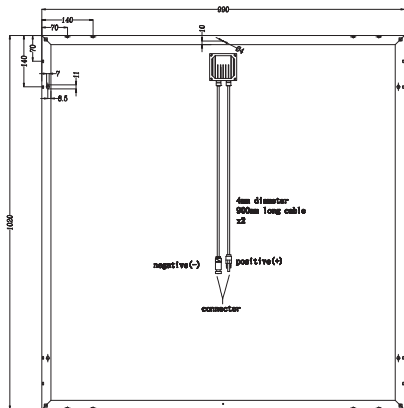
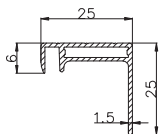
POLY CRYSTALLINE MODULE 72x(156mmx78mm)

www.risenenergy.com
THE POWER OF RISING VALUE

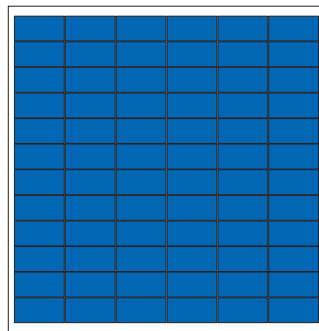


Electrical Characteristics

| Model | Pm(Wp) | Tolerance | Vm(V) | Im(A) | Voc(V) | Isc(A) |
|---------|--------|-----------|-------|-------|--------|--------|
| SYP120S | 120W | +3% | 33.5 | 3.59 | 41.8 | 3.99 |
| SYP125S | 125W | +3% | 33.8 | 3.70 | 42.2 | 4.12 |
| SYP130S | 130W | +3% | 34.3 | 3.80 | 42.8 | 4.23 |
| SYP135S | 135W | +3% | 34.6 | 3.91 | 43.3 | 4.35 |
| SYP140S | 140W | +3% | 35.1 | 3.99 | 43.8 | 4.44 |
| SYP145S | 145W | +3% | 35.4 | 4.10 | 44.2 | 4.56 |
| SYP150S | 150W | +3% | 35.8 | 4.19 | 44.7 | 4.66 |



Valued at STC (AM 1.5, 1000W/m², 25°C)



Specifications

- Number of poly crystalline solar cell 72pcsx(156mmX78mm)
- Aluminum frame, dimension 990x1020x25mm
- Weight 11.3kg
- Temperature coefficient of VOC(β) = -0.39%/°C
- Temperature coefficient of ISC(α) = +0.033%/°C
- Temperature coefficient of Pmax = -0.44%/°C
- Bypass diodes to reduce loss in partial shadow
- IP65
- CE Standard
- Performance test data for each module