



ALL-BLACK CS6K-270 | 275 | 280 M

Canadian Solar's ALL-BLACK CS6K-M modules are equipped with dark mono-crystalline cells, a dark colored backsheet and a black frame for enhanced aesthetics and reliable output. This product can improve the aesthetics of a rooftop.

KEY FEATURES



Excellent module efficiency of up to 17.11%



Outstanding low irradiance performance of up to 96.5%



IP67 junction box for long-term weather endurance



Heavy snow load up to 6000 Pa, wind load up to 4000 Pa *



linear power output warranty



product warranty on materials and workmanship

MANAGEMENT SYSTEM CERTIFICATES*

ISO 9001:2008 / Quality management system

ISO 14001:2004 / Standards for environmental management system

OHSAS 18001:2007 / International standards for occupational health and safety

PRODUCT CERTIFICATES*

IEC 61215 / IEC 61730: VDE / CE / MCS / CEC AU

UL 1703 / IEC 61215 performance: CEC listed (US)

UL 1703: CSA

Take-e-way



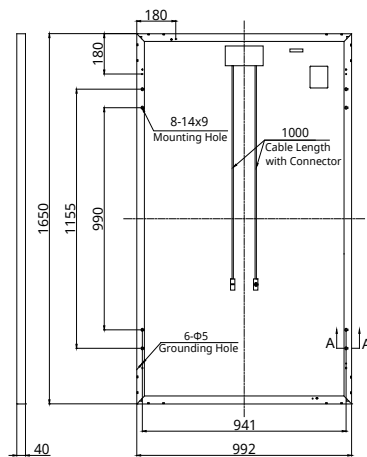
* Please contact your local Canadian Solar sales representative for the specific product certificates applicable in your market.

CANADIAN SOLAR INC. is committed to providing high quality solar products, solar system solutions and services to customers around the world. As a leading PV project developer and manufacturer of solar modules with over 20 GW deployed around the world since 2001, Canadian Solar Inc. (NASDAQ: CSIQ) is one of the most bankable solar companies worldwide.

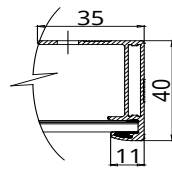
*For detail information, please refer to Installation Manual.

ENGINEERING DRAWING (mm)

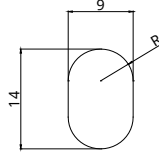
Rear View



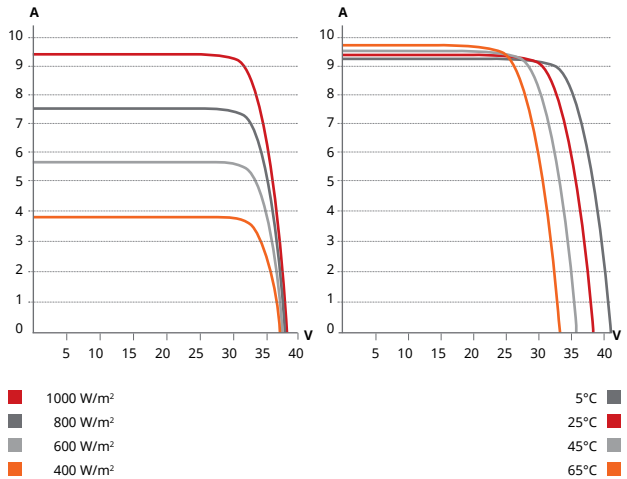
Frame Cross Section A-A



Mounting Hole



ALL-BLACK CS6K-280M / I-V CURVES



ELECTRICAL DATA | STC*

All-Black CS6K	270M	275M	280M
Nominal Max. Power (P _{max})	270 W	275 W	280 W
Opt. Operating Voltage (V _{mp})	31.1 V	31.3 V	31.5 V
Opt. Operating Current (I _{mp})	8.67 A	8.80 A	8.89 A
Open Circuit Voltage (V _{oc})	38.2 V	38.3 V	38.5 V
Short Circuit Current (I _{sc})	9.19 A	9.31 A	9.43 A
Module Efficiency	16.50%	16.80%	17.11%
Operating Temperature	-40°C ~ +85°C		
Max. System Voltage	1000 V (IEC) or 1000 V (UL)		
Module Fire Performance	TYPE 1 (UL 1703) or CLASS C (IEC 61730)		
Max. Series Fuse Rating	15 A		
Application Classification	Class A		
Power Tolerance	0 ~ + 5 W		

* Under Standard Test Conditions (STC) of irradiance of 1000 W/m², spectrum AM 1.5 and cell temperature of 25°C.

ELECTRICAL DATA | NMOT*

All-Black CS6K	285M	290M	295M
Nominal Max. Power (P _{max})	197 W	201 W	205 W
Opt. Operating Voltage (V _{mp})	28.5 V	28.7 V	28.9 V
Opt. Operating Current (I _{mp})	6.93 A	7.02 A	7.10 A
Open Circuit Voltage (V _{oc})	35.5 V	35.5 V	35.7 V
Short Circuit Current (I _{sc})	7.43 A	7.52 A	7.62 A

* Under Nominal Module Operating Temperature (NMOT), irradiance of 800 W/m², spectrum AM 1.5, ambient temperature 20°C, wind speed 1 m/s.

PERFORMANCE AT LOW IRRADIANCE

Outstanding performance at low irradiance, with an average relative efficiency of 96.5 % from irradiances, between 200 W/m² and 1000 W/m² (AM 1.5, 25°C).

The aforesaid datasheet only provides the general information on Canadian Solar products and, due to the on-going innovation and improvement, please always contact your local Canadian Solar sales representative for the updated information on specifications, key features and certification requirements of Canadian Solar products in your region.

Please be kindly advised that PV modules should be handled and installed by qualified people who have professional skills and please carefully read the safety and installation instructions before using our PV modules.

MECHANICAL DATA

Specification	Data
Cell Type	Mono-crystalline, 6 inch
Cell Arrangement	60 (6 × 10)
Dimensions	1650×992×40 mm (65.0×39.1×1.57 in)
Weight	18.2 kg (40.1 lbs)
Front Cover	3.2 mm tempered glass
Frame Material	Anodized aluminium alloy
J-Box	IP67, 3 diodes
Cable	4 mm ² (IEC) or 4 mm ² & 12 AWG 1000 V (UL), 1000 mm (39.4 in)
Connectors	T4 series or PV2 series
Per Pallet	26 pieces, 520 kg (1146.4 lbs)
Per Container (40' HQ)	728 pieces

TEMPERATURE CHARACTERISTICS

Specification	Data
Temperature Coefficient (P _{max})	-0.41 % / °C
Temperature Coefficient (V _{oc})	-0.31 % / °C
Temperature Coefficient (I _{sc})	0.053 % / °C
Nominal Module Operating Temperature (NMOT)	44±2 °C

PARTNER SECTION

