

STANDARD MODULE

(ALL BLACK MODULE IS OPTIONAL)



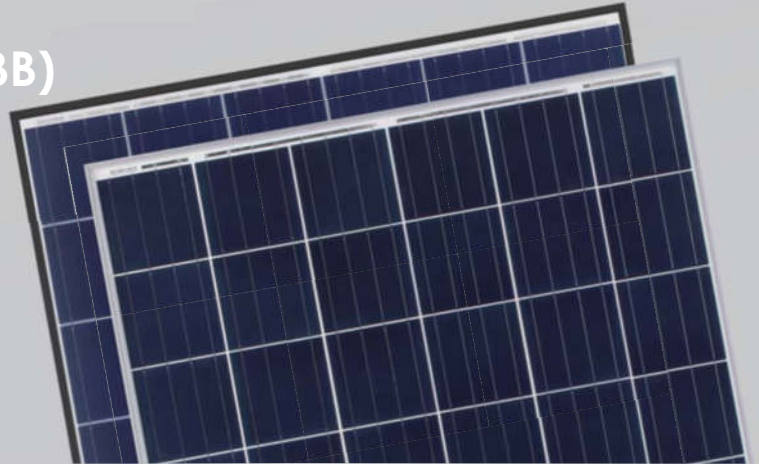
Cetesolar 48 205-225 Watt

POLY CRYSTALLINE MODULE

Positive power tolerance of 0~+3%

ISO9001:2008, ISO14001:2004, OHSAS18001 certified factory.
IEC61215, IEC61730 certified products.

(4BB)



KEY FEATURES



4 Busbar Solar Cell:

4 busbar solar cell adopts new technology to improve the efficiency of modules, offers a better aesthetic appearance, making it perfect for rooftop installation.



High Power Output:

Polycrystalline 48-cell module achieves a power output up to 225Wp.



PID RESISTANT:

Limited power degradation of Eagle module caused by PID effect is guaranteed under strict testing condition (85 C /85%RH,96hours)for mass production.



Low-light Performance:

Advanced glass and surface texturing allow for excellent performance in low-light environments.



Severe Weather Resilience:

Certified to withstand: wind load (2400 Pascal) and snow load (5400 Pascal).



Durability against extreme environmental conditions:

High salt mist and ammonia resistance certified by TUV NORD.

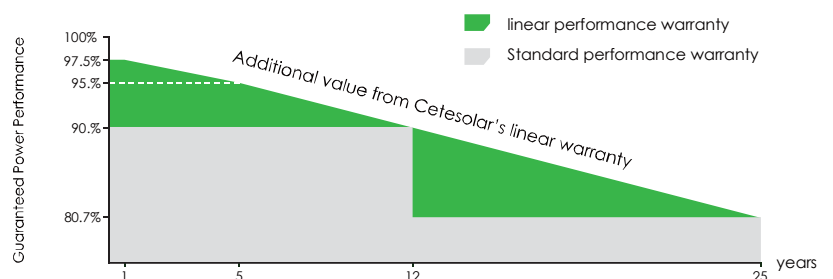


Temperature Coefficient:

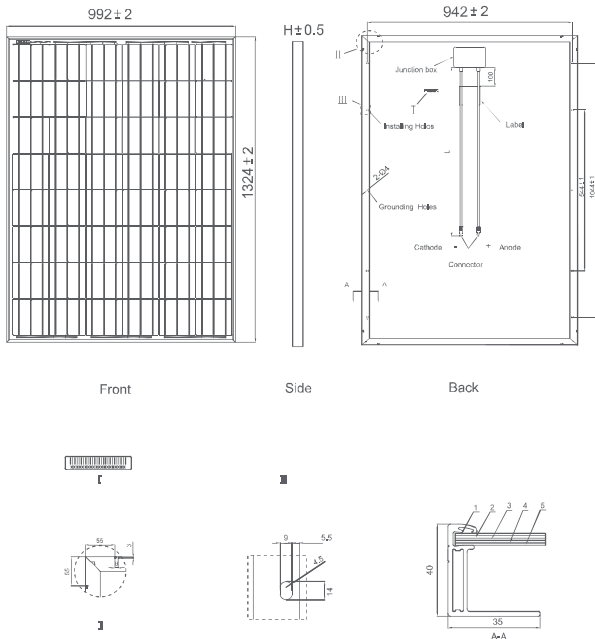
Improved temperature coefficient decreases power loss during high temperatures.

LINEAR PERFORMANCE WARRANTY

10 Year Product Warranty • 25 Year Linear Power Warranty



Engineering Drawings



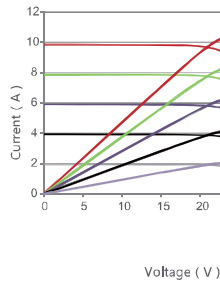
Packaging Configuration

(Two boxes=One pallet)

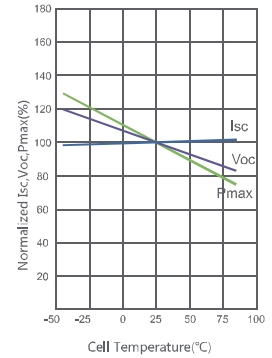
26pcs/box, 52pcs/pallet, 832 pcs/40'HQ Container

Electrical Performance & Temperature Dependence

Current-Voltage & Power-Voltage Curves (215W)



Temperature Dependence of Isc, Voc, Pmax



Mechanical Characteristics

Cell Type	Poly-crystalline 156×156mm (6 inch)
No. of cells	48 (6×8)
Dimensions	1324×992×40mm
Weight	14.8 kg
Front Glass	3.2mm, Anti-Reflection Coating, High Transmission, Low Iron, Tempered Glass
Frame	Anodized Aluminium Alloy
Junction Box	IP67 Rated
Output Cables	TÜV 1×4.0mm ² , Length: 900mm or Customized Length

SPECIFICATIONS

Module Type	CS205P-48		CS210P-48		CS215P-48		CS220P-48		CS225P-48	
	STC	NOCT	STC	NOCT	STC	NOCT	STC	NOCT	STC	NOCT
Maximum Power (Pmax)	205Wp	153Wp	210Wp	156Wp	215Wp	160Wp	220Wp	164Wp	225Wp	170Wp
Maximum Power Voltage (Vmp)	24.7V	21.8V	24.8V	22.0V	25.0V	22.3V	25.2V	22.6V	25.4V	22.5V
Maximum Power Current (Imp)	8.30A	7.03A	8.47A	7.11A	8.60A	7.19A	8.73A	7.26A	8.86A	7.56A
Open-circuit Voltage (Voc)	31.2V	28.9V	31.5V	29.2V	31.8V	29.5V	32.1V	29.8V	32.4V	30.1V
Short-circuit Current (Isc)	9.49A	7.56A	9.67A	7.78A	9.85A	7.89A	10.03A	7.97A	10.21A	8.08A
Module Efficiency STC (%)	15.61%		15.99%		16.37%		16.75%		17.14%	
Operating Temperature(°C)	-40°C~+85°C									
Maximum system voltage	1000VDC (IEC)									
Maximum series fuse rating	15A									
Power tolerance	0~+3%									
Temperature coefficients of Pmax	-0.40%/°C									
Temperature coefficients of Voc	-0.30%/°C									
Temperature coefficients of Isc	0.06%/°C									
Nominal operating cell temperature (NOCT)	45±2°C									

*STC: Irradiance 1000W/m² Cell Temperature 25°C AM=1.5

NOCT: Irradiance 800W/m² Ambient Temperature 20°C AM=1.5 Wind Speed 1m/s

* Power measurement tolerance: ± 3%

Cetesolar Co.,Ltd. | Mail:sales@cetesolar.com
Office:+86-731-87012835

Skype:cetesolar
Mobile/What'sApp:+86-18807419000