

# SPU-280P

## Poly Crystalline Module



**High Conversion Efficiency**  
High input efficiency to guarantee power output.



**0 to +3% Positive Tolerance**  
Solar Panel will generate at least as much power as being shown on electrical sheet.



**Self-Cleaning Glass**  
Made of a specific type of glass with a surface that keeps itself free of dirt and grime.



**48-Hour Response Service**  
Ensure clients can get the response within 48-hour from our technical support team.



**Free Microcrack**  
Our State of the Art Technologies ensure our Solar Panel to meet the expected lifespan.



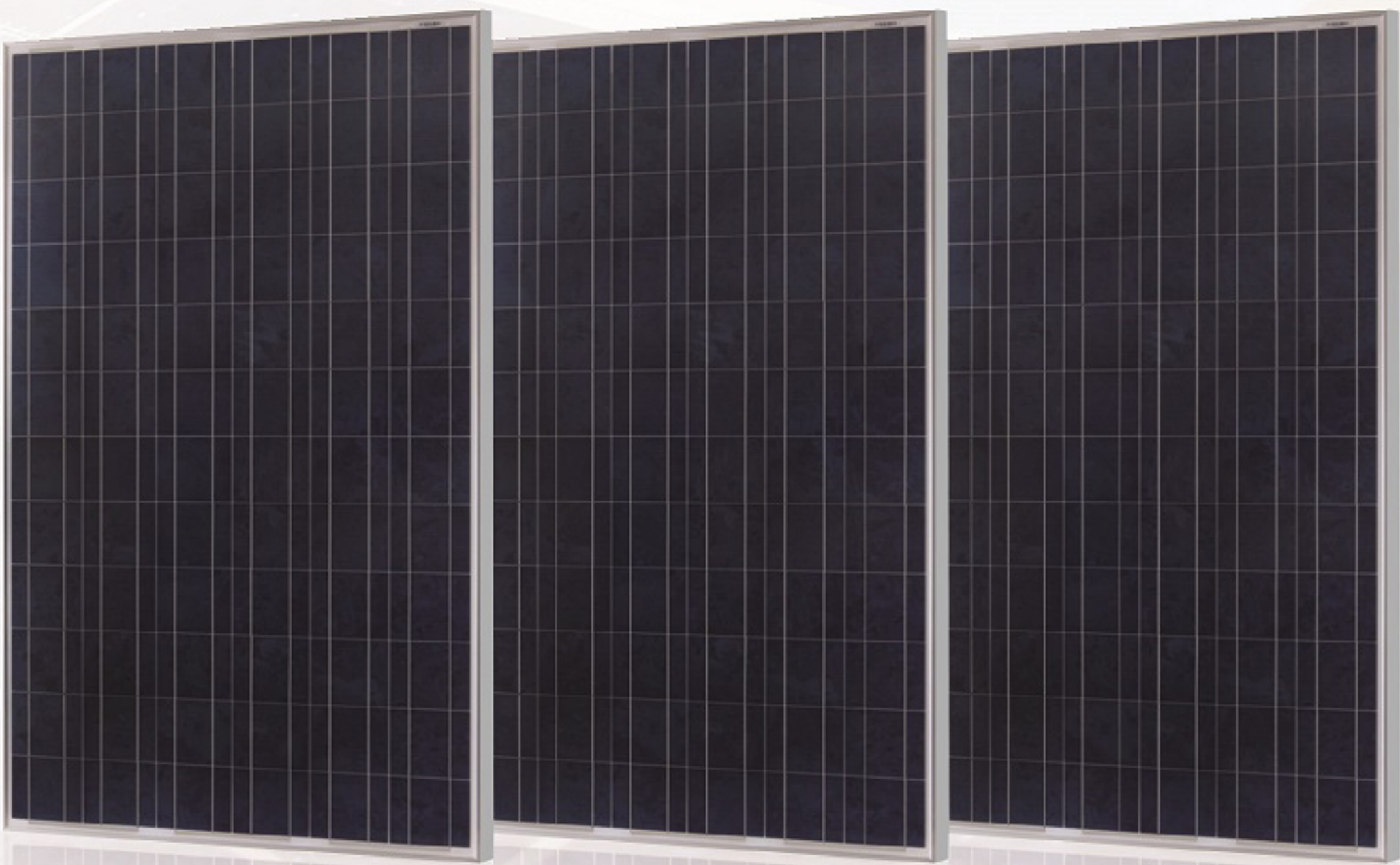
**20 Years Performance Warranty**  
With maximum degression in performance of 1% annually.



**Outstanding Low Irradiation Performance**  
High yield performance even on low light such as cloudy or shaded conditions.



**8 Years Materials & Workmanship Warranty**  
All of our products will be free from defects in material and workmanship, under normal use and proper handling.



ISO 14001



ISO 9001



SNI 04-3850.2-1995 by BPPT  
SNI 04-6298-2000 Salt Resistance  
IEC 61215-61730 by TUV SUD



TKDN dari Kementerian Perindustrian

# SPU-280P

## Poly Crystalline Module

### SPECIFICATIONS

#### ELECTRICAL SPECIFICATION

Module Type	SPU-280P		
Maximum Power (Pmax)	280 Wp	290 Wp	300 Wp
Maximum Power Voltage (Vmp)	35.5 V	35.8 V	36.43 V
Maximum Power Current (Imp)	7.89 A	8.15 A	8.35 A
Open-circuit Voltage (Voc)	44.5 V	44.9 V	45.67 V
Short-circuit Current (Isc)	8.81 A	8.82 A	8.83 A
Maximum System Voltage	1000 V		
Maximum Rated Current Series	14 A		
Power Tolerance	+3%		
Nominal Operating Cell Temperature (NOCT)	45±2°C		
Module Efficiency	Please refer to Test Report		

#### MECHANICAL SPECIFICATION

Cell Size	156 x 156 mm
Number of Cell	72 Cells
Netto Weight	23 Kg
Gross Weight	25 Kg
Dimension	1956 x 992 x 50 mm
Bypass Diode	3
Junction Box IP Rating	IP 67 (dust & water protection)
Lifetime	20 Years

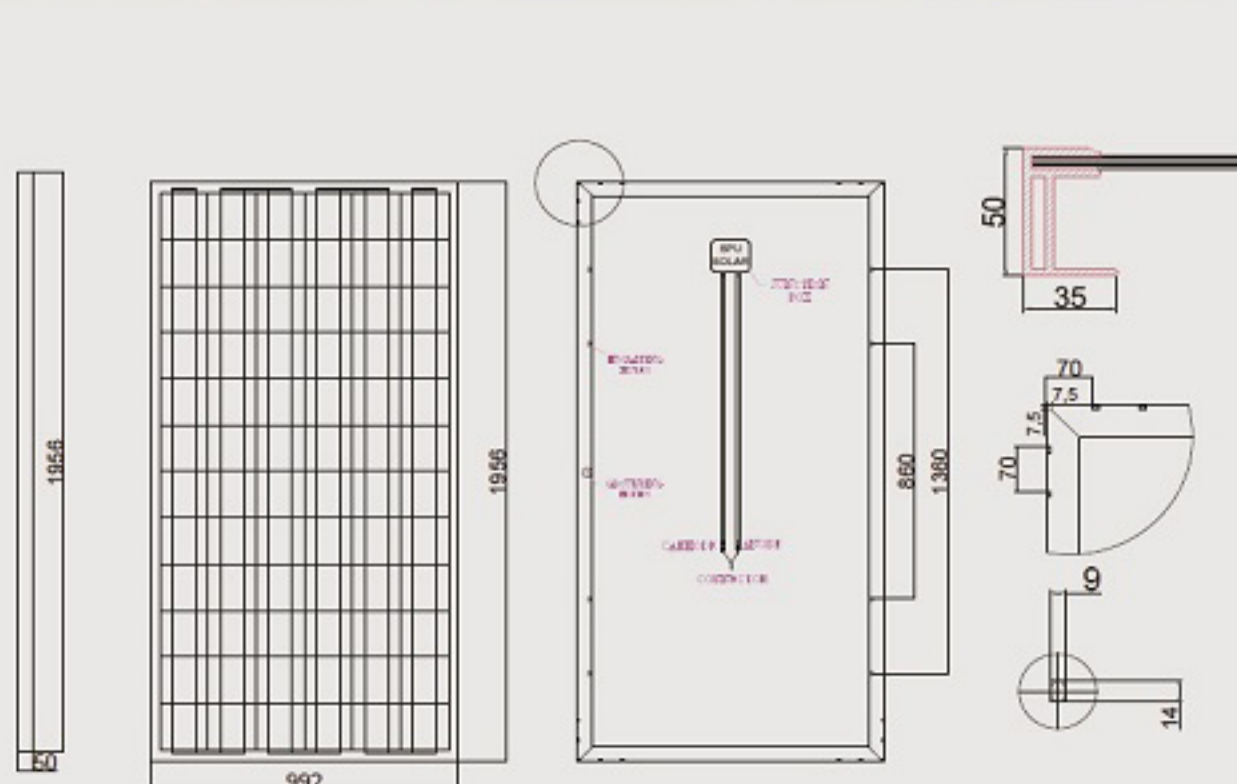
#### TEMPERATURE COEFFICIENT

Operating Temperature	-40°C-85°C
Temperature Coefficient of Pmax	-0.47%/°C
Temperature Coefficient of Voc	-0.40%/°C
Temperature Coefficient of Isc	-0.05%/°C

#### PACKING MANNER

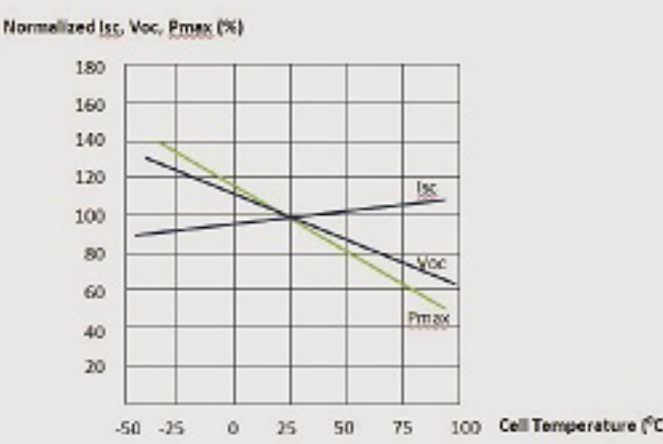
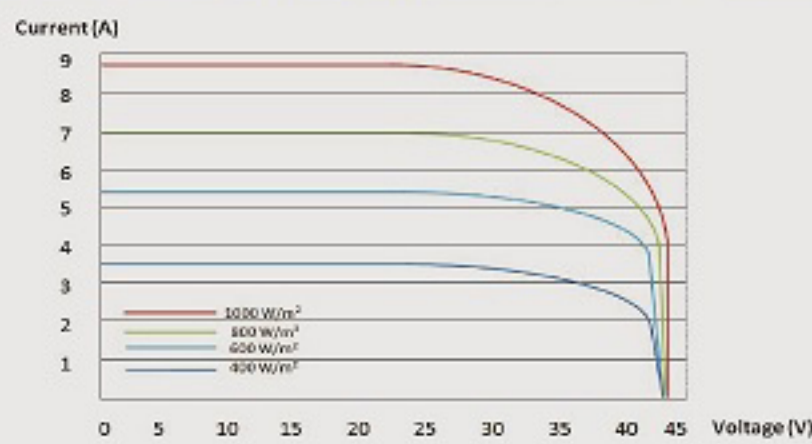
Piece / Box	1 Pcs
Piece / 20 Feet Container	120 Pcs
Piece / 40 Feet Container	240 Pcs

#### ENGINEERING DRAWINGS



The company reserves the final right of explanation on any information hereby presented

#### I-V CURVES & TEMPERATURE



I-V Curves & Temperature Dependence of Isc, Voc, Pmax

STC :

Irradiance  
1000 W/m²



Module  
Temperature 25°C



AM=1.5

Please contact [cs@swadayaprima.com](mailto:cs@swadayaprima.com) for technical support. This parameters is for reference only and it is not a part of the contracts, The specification are subject to change without prior notice.