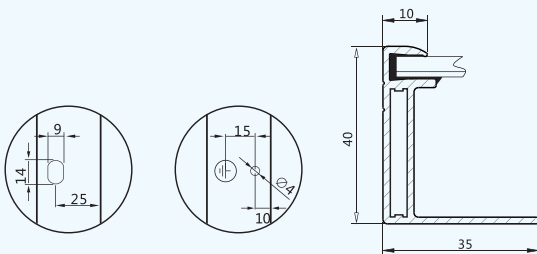
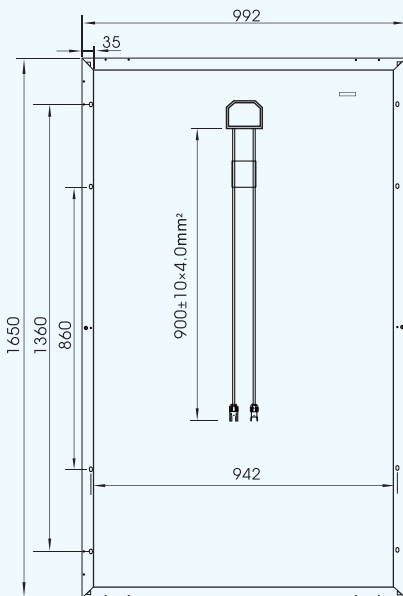
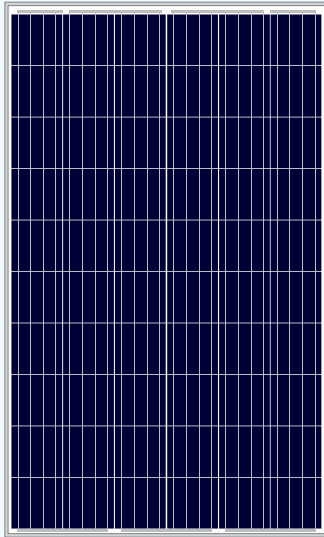


# LINUO POWER SOLAR MODULES

Shandong Linuo Photovoltaic Hi-tech Co., Ltd.  
Add: No. 30766 East Jingshi Road, Jinan 250103, China.  
Tel: +86-531-88729696 / 88729106 / 88729770  
E-mail: pv@linuo.com  
Web: www.linuopower.com

## LN260(30)P-4 (260-275W)

Poly / 4 Busbar / 60pcs



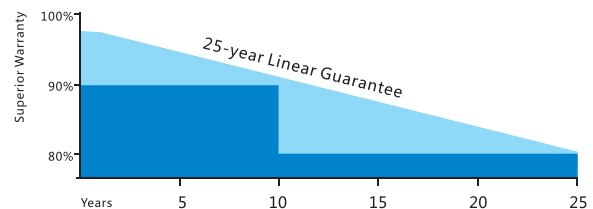
### Key Features

- Power output : Positive tolerance of up to 5W
- 100%EL 2 times-inspection ensures modules are defect free
- 25 year irrevocable warranty insurance-Solarsafe
- Anti-reflective and self-cleaning surface reduces power loss from dirt and dust
- Certified to withstand increased snow loads of up to 5400Pa and wind loads of up to 2400Pa
- High performance and power output in low solar irradiation
- High salt and ammonia resistance certified by TUV Nord
- Top-Ranking in STS Long-term Test

### Comprehensive Certificates

- IEC61215, IEC61730, UL1703,
- TUV, UL, PV Cycle, JET, INMETRO, CEC, MCS, CE, IEC
- ISO9001:2008
- ISO14001:2004
- OHSAS 18001:1999

### Superior Warranty



### 25-year Linear Power Output Warranty

In the first year of warranty, the peak power of poly-crystalline module should be no less than 97.5% of the rated power (Pmax.) and 96.5% for mono-crystalline module. At the end of the 25th year, power of modules should be at least 80% of rated power. The annual decline in performance is 0.70% maximum for poly-crystalline modules and 0.68% for mono-crystalline modules.

# LINUO POWER

## SOLAR MODULES

Shandong Linuo Photovoltaic Hi-tech Co., Ltd.  
 Add: No. 30766 East Jingshi Road, Jinan 250103, China.  
 Tel: +86-531-88729696 / 88729106 / 88729770  
 E-mail: pv@linuo.com  
 Web: www.linuopower.com

### LN260(30)P-4 (260-275W)

Poly / 4 Busbar / 60pcs

#### Electrical Parameters@STC

Pmax (W)	Umpp (V)	Impp (A)	Uoc (V)	Isc (A)	FF	Module Efficiency	Max System Voltage	Max Series Fuse
260	31.01	8.39	37.73	9.02	76.45%	15.88%	1000V	15A
265	31.22	8.49	37.90	9.11	76.77%	16.19%	1000V	15A
270	31.47	8.58	38.18	9.20	76.87%	16.50%	1000V	15A
275	31.80	8.65	38.51	9.28	76.97%	16.80%	1000V	15A

#### Temperature Coefficient

Temperature Cycling Range:	-40°C+85°C
Normal Operating Cell Temperature:	46±2 °C
Temperature Coefficient of Isc:	0.044%/°C
Temperature Coefficient of Voc:	-0.317%/°C
Temperature Coefficient of Pmax:	-0.423%/°C

#### Mechanical Data

Module Dimension:	1650×992×40mm
Weight:	19kg
Snow/Wind Load:	5400/2400 Pa
Number of Cells:	60pcs
Thickness of Glass:	3.2mm
Junction Box;	IP67, 3 Diodes
Connector:	MC4 Compatible, IP67

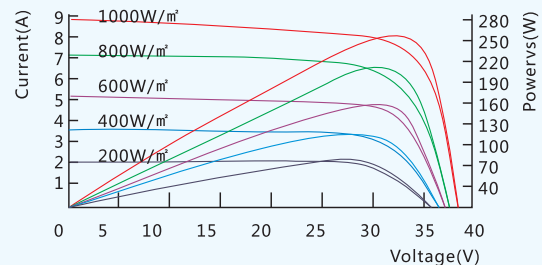
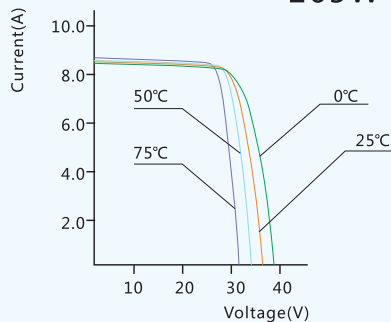
#### Guarantee

10-year warranty on materials & workmanship  
 25-year linear power output warranty

#### Packaging Configuration

Modules Per Pallet: 27pcs  
 Modules Per 40' HQ : 756pcs

265W Poly Module I-V Curve



STC: Irradiance 1000W/m<sup>2</sup>  
 NOCT: Irradiance 800W/m<sup>2</sup>

Temperature 25°C  
 Temperature 20°C

AM=1.5  
 Wind Speed 1m/s



Specifications subject to technical changes and tests, Linuo Power reserves the right of final interpretation

To create value to customers