

2mm+2mm

Thickness

19.6 kg

Weight

17.3%

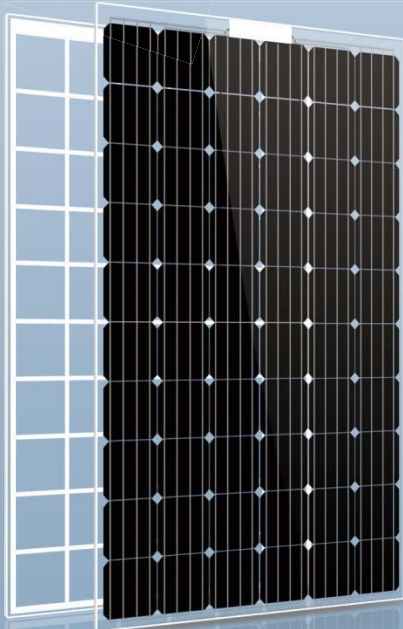
Max efficiency

60 cells

Monocrystalline

270-285W

Power Output

FRAMELESS

DUAL GLASS MODULE



Super Weather Resistance

Absolute water-proof, Anti-corrosion by acid, alkaline and ammonia, Anti-friction. Better thermal dissipation. 30+ years without worry.



PID Free

Potential induced degradation (PID) free guaranteed.



Micro-Crack Free

No micro-cracks under harsh transportation, complicated handling and installation conditions, and during lifetime module operation.



Fire Class A

Glass-glass design helps to save module from damages caused by arc and hot spots, eliminating potential dangers of fire.



Extended warranty

- 10 years product warranty on workmanship & materials.
- 30 years linear power output warranty.



Cleaning with ease

Frameless design, no dust trapped on the edge.

ELECTRICAL SPECIFICATION (STC)

Module	M60-270	M60-275	M60-280	M60-285
Rated Power (Pmpp)	270W	275W	280W	285W
Rated Current (Imp)	8.67A	8.71A	8.81A	8.89A
Rated Voltage (Vmpp)	31.15V	31.58V	31.79V	32.06V
Short Circuit Current (Isc)	9.02A	9.18A	9.28A	9.37A
Open Circuit Voltage (Voc)	38.43V	38.67V	39.15V	39.47V
Efficiency	16.4%	16.7%	17.0%	17.3%

MECHANICAL SPECIFICATION

Cell Type	Mono-crystalline
Cell Dimension	156.75mm × 156.75mm
Module Dimension	1662mm × 990mm × 5mm (J-box not included)
Weight	19.6kg
Front Glass	2mm tempered AR glass
Encapsulant	POE
Back Glass	2mm tempered glass / 2mm ceramic coated glass
Junction Box	IP67 (three bypass diodes)
Cable	4.0mm ²
Connector	LCS-R1 (MC4 equivalent)

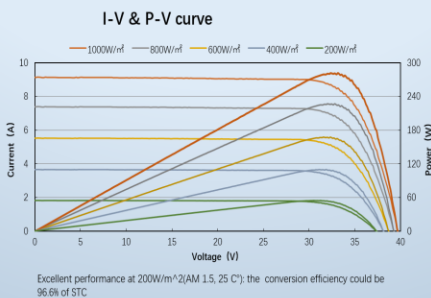
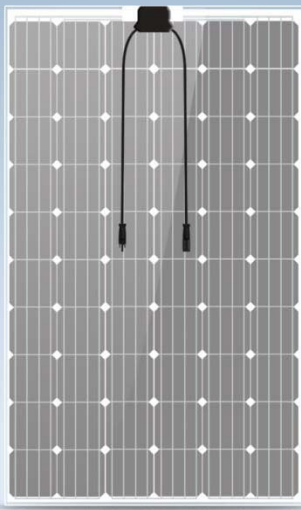
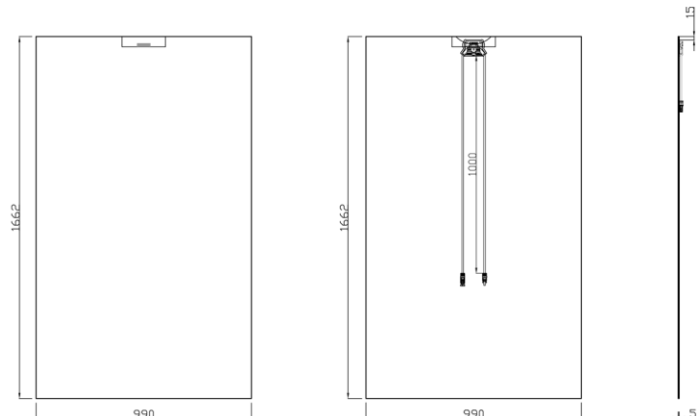
TEMPERATURE COEFFICIENT

Nominal Operating Cell Temperature	NOCT	°C	45±2
Temperature Coefficient of Isc	α	%/°C	+0.032
Temperature Coefficient of Voc	β	%/°C	-0.305
Temperature Coefficient of Pmpp	γ	%/°C	-0.404

LIMITS

Operational Temperature	°C	-40~+85
Maximum Static Load	Pa	5400
Maximum Wind Load	Pa	2400
Maximum System Voltage	V(DC)	IEC:1000 UL:1000
Maximum Series Fuse Rating	A	15

DIMENSION(mm)



Packaging Configuration

Modules per box: 38 pieces
 Modules per 40' container: 988 pieces