

**2mm+2mm**

Thickness

**19.6 kg**

Weight

**16.7%**

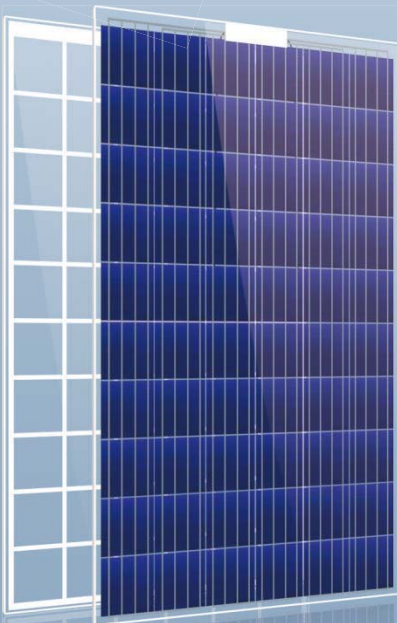
Max efficiency

**60 cells**

Polycrystalline

**260-275W**

Power Output

**FRAMELESS**

# DUAL GLASS MODULE



## Super Weather Resistance

Absolute water-proof, Anti-corrosion by acid, alkaline and ammonia, Anti-friction. Better thermal dissipation. 30+ years without worry.



## PID Free

Potential induced degradation (PID) free guaranteed.



## Micro-Crack Free

No micro-cracks under harsh transportation, complicated handling and installation conditions, and during lifetime module operation.



## Fire Class A

Glass-glass design helps to save module from damages caused by arc and hot spots, eliminating potential dangers of fire.



## Extended warranty

- 10 years product warranty on workmanship & materials.
- 30 years linear power output warranty.



## Cleaning with ease

Frameless design, no dust trapped on the edge.

## ELECTRICAL SPECIFICATION (STC)

| Module                      | P60-260 | P60-265 | P60-270 | P60-275 |
|-----------------------------|---------|---------|---------|---------|
| Rated Power (Pmpp)          | 260W    | 265W    | 270W    | 275W    |
| Rated Current (Impp)        | 8.37A   | 8.50A   | 8.57A   | 8.62A   |
| Rated Voltage (Vmpp)        | 31.08V  | 31.24V  | 31.51V  | 31.94V  |
| Short Circuit Current (Isc) | 8.85A   | 8.95A   | 9.04A   | 9.16A   |
| Open Circuit Voltage (Voc)  | 37.92V  | 38.09V  | 38.51V  | 38.72V  |
| Efficiency                  | 15.8%   | 16.1%   | 16.4%   | 16.7%   |

## MECHANICAL SPECIFICATION

|                  |   |
|------------------|---|
| Cell Type        | Poly-crystalline                              |
| Cell Dimension   | 156.75mm × 156.75mm                           |
| Module Dimension | 1662mm × 990mm × 5mm (J-box not included)     |
| Weight           | 19.6kg  |
| Front Glass      | 2mm tempered AR glass                         |
| Encapsulant      | POE   |
| Back Glass       | 2mm tempered glass / 2mm ceramic coated glass |
| Junction Box     | IP67 (three bypass diodes)                    |
| Cable            | 4.0mm <sup>2</sup>                            |
| Connector        | LCS-R1 (MC4 equivalent)                       |

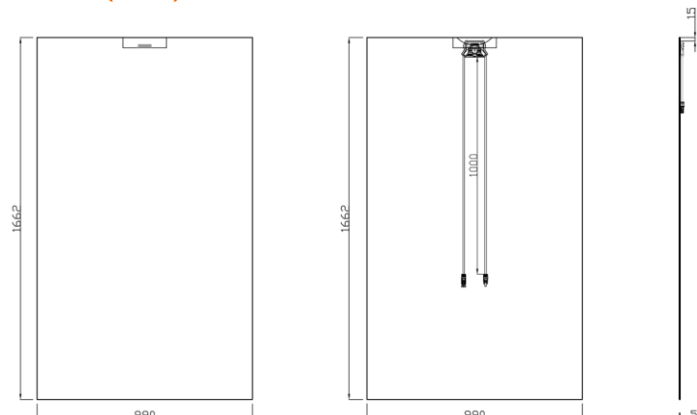
## TEMPERATURE COEFFICIENT

|                                    |          |      |        |
|------------------------------------|----------|------|--------|
| Nominal Operating Cell Temperature | NOCT     | °C   | 45±2   |
| Temperature Coefficient of Isc     | $\alpha$ | %/°C | +0.041 |
| Temperature Coefficient of Voc     | $\beta$  | %/°C | -0.307 |
| Temperature Coefficient of Pmpp    | $\gamma$ | %/°C | -0.399 |

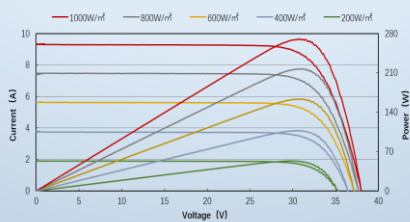
## LIMITS

|                            |       |                  |
|----------------------------|-------|------------------|
| Operational Temperature    | °C    | -40 ~ +85        |
| Maximum Static Load        | Pa    | 5400             |
| Maximum Wind Load          | Pa    | 2400             |
| Maximum System Voltage     | V(DC) | IEC:1000 UL:1000 |
| Maximum Series Fuse Rating | A     | 15               |

## DIMENSION(mm)



I-V &amp; P-V curve



Excellent performance at 200W/m<sup>2</sup>(AM 1.5, 25 °C): the conversion efficiency could be 96.2% of STC

## Packaging Configuration

Modules per box: 38 pieces  
 Modules per 40' container: 988 pieces