

多晶硅太阳能板 POLYCRYSTALLINE SOLAR PANEL

60-70W 多晶硅太阳能板 POLY SOLAR PANEL

规格 Specifications

尺寸(长×宽×高) Dimension (H×W×D)	电池片数量 Number of cells	电池片尺寸 Cells Size	重量 Weight
760mm×680mm×35mm	36PCS (4×9)	Polycrystalline 156 mm×76mm	6.0kgs

性能参数 Characteristics

型号 Model No	SD60P-12	SD65P-12	SD70P-12
峰值功率 Maximum power (Pm)	60W	65W	70W
开路电压 Open circuit voltage (Voc)	21.6V	21.6V	21.6V
短路电流 Short circuit current (Isc)	3.63A	3.93A	4.23A
峰值电压 Optimum operating voltage (Vmp)	18.0V	18.0V	18.0V
峰值电流 Optimum operating current (Imp)	3.33A	3.61A	3.89A

测试标准STC: Irradiance 1000W/m², Temperature 25°C, AM=1.5



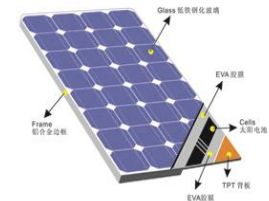
单晶硅太阳能电池板规格表
Specifications for Mono-crystalline Silicon Solar Panels

型号 Model No.	峰值功率Pm Maximum power (Wp)	开路电压Voc Open circuit voltage (V)	短路电流Isc Short circuit current (A)	峰值电压Vmp Maximum operating voltage(V)	峰值电流Imp Maximum operating current (A)	组件尺寸 长×宽×高 Module Dimension H×W×D (mm)
SFDM320W-72	320	45.3	9.46	36.5	8.77	1950*990*50
SFDM310W-72	310	45.3	9.08	36.5	8.51	1950*990*50
SFDM305W-72	305	45.3	9.02	36.5	8.36	1950*990*50
SFDM300W-72	300	45.3	8.79	36.5	8.22	1950*990*50
SFDM295W-72	295	45.3	8.72	36.5	8.08	1950*990*50
SFDM290W-72	290	44.6	8.61	36.0	8.05	1950*990*50
SFDM285W-72	285	44.6	8.55	36.0	7.92	1950*990*50
SFDM280W-72	280	44.6	8.40	36.0	7.78	1950*990*50
SFDM275W-72	275	37.9	8.95	30.5	8.86	1950*990*50
SFDM270W-60	270	37.8	8.91	30.5	8.53	1640*990*45
SFDM260W-60	260	44.0	7.98	35.5	7.32	1640*990*45
SFDM250W-60	250	37.8	8.85	30.5	8.20	1640*990*45
SFDM245W-60	245	37.2	8.74	30.0	8.17	1640*990*45
SFDM240W-60	240	37.2	8.65	30.0	8.00	1640*990*45
SFDM235W-60	235	37.2	8.46	30.0	7.83	1640*990*45
SFDM230W-60	230	36.6	8.42	29.5	7.80	1640*990*45
SFDM230W-72	230	34.9	9.03	27.5	8.37	1480*990*40
SFDM225W-72	225	34.9	8.83	27.5	8.18	1480*990*40
SFDM220W-72	220	34.9	8.72	27.5	8.00	1480*990*40
SFDM215W-72	215	34.3	8.67	27.0	7.96	1580*808*35
SFDM210W-72	210	34.3	8.48	27.0	7.78	1580*808*35
SFDM205W-72	205	33.7	8.43	26.5	7.74	1580*808*35
SFDM200W-72	200	44.7	5.98	36.5	5.48	1580*808*35
SFDM195W-72	195	44.6	5.82	36.5	5.34	1580*808*35
SFDM190W-72	190	43.9	5.68	36.5	5.21	1580*808*35
SFDM185W-72	185	43.9	5.60	36.0	5.14	1580*808*35
SFDM180W-72	180	43.6	5.45	36.0	5.00	1580*808*35
SFDM175W-72	175	43.6	5.30	36.0	4.86	1580*808*35
SFDM170W-72	170	43.6	5.15	36.0	4.72	1580*808*35

单晶硅太阳能电池板规格表
Specifications for Mono-crystalline Silicon Solar Panels

型号 Model No.	峰值功率Pm Maximum power (Wp)	开路电压Voc Open circuit voltage (V)	短路电流Isc Short circuit current (A)	峰值电压Vmp Maximum operating voltage(V)	峰值电流Imp Maximum operating current (A)	组件尺寸 长×宽×高 Module Dimension H×W×D (mm)
SFDM160W-36	160	21.6	9.12	18.0	8.89	1480*680*35
SFDM150W-36	150	21.6	9.08	18.0	8.33	1480*680*35
SFDM145W-36	145	21.6	8.78	18.0	8.05	1480*680*35
SFDM140W-36	140	21.6	8.24	18.0	7.78	1480*680*35
SFDM135W-36	135	21.6	8.01	18.0	7.50	1480*680*35
SFDM130W-36	130	21.6	7.87	18.0	7.22	1480*680*35
SFDM125W-36	125	21.6	7.57	18.0	6.95	1320*680*35
SFDM120W-36	120	21.6	7.27	18.0	6.67	1320*680*35
SFDM115W-36	115	21.6	6.96	18.0	6.39	1320*680*35
SFDM110W-36	110	21.6	6.66	18.0	6.11	1200*540*35
SFDM105W-36	105	21.6	6.30	18.0	5.83	1200*540*35
SFDM100W-36	100	21.6	6.05	18.0	5.56	1200*540*35
SFDM95W-36	95	21.6	5.75	18.0	5.28	1200*540*35
SFDM90W-36	90	21.6	5.45	18.0	5.00	1200*540*35
SFDM85W-36	85	21.6	5.10	18.0	4.72	1200*540*35
SFDM80W-36	80	21.6	4.84	18.0	4.45	1200*540*35
SFDM75W-36	75	21.6	4.54	18.0	4.17	760*680*35
SFDM70W-36	70	21.6	4.23	18.0	3.89	760*680*35
SFDM65W-36	65	21.6	3.93	18.0	3.61	760*680*35
SFDM60W-36	60	21.6	3.63	18.0	3.33	850*540*35
SFDM55W-36	55	21.6	3.33	18.0	3.06	720*540*35
SFDM50W-36	50	21.6	3.02	18.0	2.78	680*540*35
SFDM45W-36	45	21.6	2.72	18.0	2.5	610*540*25
SFDM40W-36	40	21.6	2.42	18.0	2.22	610*540*25
SFDM35W-36	35	21.6	2.12	18.0	1.95	520*540*25
SFDM30W-36	30	21.6	1.81	18.0	1.67	460*540*25
SFDM25W-36	25	21.6	1.51	18.0	1.39	400*540*25
SFDM20W-36	20	21.6	1.21	18.0	1.11	540*350*25
SFDM15W-36	15	21.6	0.91	18.0	0.83	400*350*18
SFDM10W-36	10	21.6	0.60	18.0	0.56	350*280*18
SFDM5W-36	5	21.6	0.30	18.0	0.278	280*180*18

工作温度 Operating temperature :- 40 to + 85 °C
最大系统电压 Maximum system voltage :1000V DC
测试标准 STC:Irradiance 1000W/m², Temperature 25°C, AM=1.5
产品保证 Limited Warranty:Power output not less than 90% in 10 years and 80% in 25 years



太阳能板结构图
Structure of Solar Panels