



UKSOL

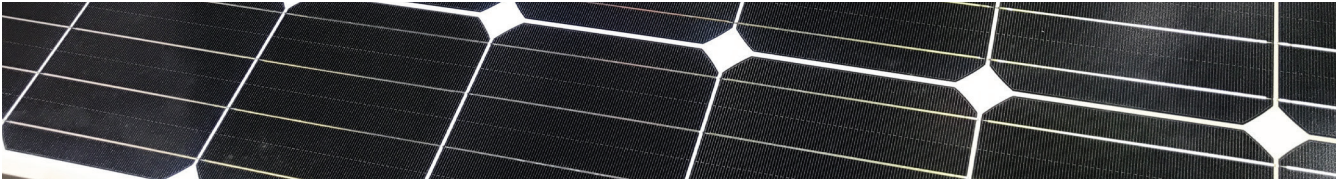


**30 YEAR
BRITISH
WARRANTY**

A BRITISH BRAND OF HIGH QUALITY SOLAR MODULES

UKSOL solar PV modules are always produced with the latest high quality grade A solar cells to deliver the maximum return on your investment. Every UKSOL solar module comes with a British 12 year product warranty and a 30 year performance warranty. Technical and warranty support is provided by our dedicated customer care team based near London.

MODEL UKSOL UKS-6M MONOCRYSTALLINE MODULE



ADVANCED PERFORMANCE & PROVEN ADVANTAGES

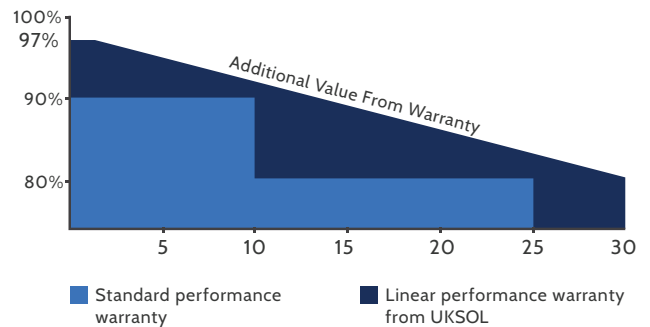
- High module conversion efficiency up to 18.04% through advanced manufacturing technology.
- Low degradation and excellent performance under high temperature and low light conditions.
- Robust aluminum frame ensures the modules withstand wind loads up to 2400Pa and snow loads up to 5400Pa.
- Positive power tolerance of 0 ~ +3%. High ammonia and salt mist resistance.
- PID Free. Fire tested. Risk free procurement and support from the UK.
- Fully automated production | Special AR gloss coating 4 or 5 bus bars for best performance

QUALITY CERTIFICATES

- IEC61215, IEC61730, IEC62716, IEC61701, InMetro (Brazil), Retie (Colombia), special PI-Institut Berlin test report
- ISO9001:2008: Quality management system
ISO14001:2004: Environmental management system
OHSAS18001:2007: Occupational health and safety management system

BRITISH WARRANTIES

- 12 year product warranty.
- Limited power warranty: 12 years 91.2% of the nominal power output, 30 years 80.6% of the nominal power output.



- LOW RISK BRITISH PROCUREMENT
- BRITISH TECHNICAL SUPPORT
- ALWAYS GRADE "A" CELLS
- BRITISH QUALITY STANDARDS
- THAMES VALLEY CHAMBER OF COMMERCE GROUP MEMBER
- TUV NORD Type Tested

ELECTRICAL CHARACTERISTICS AT STC

Nominal Power (Pmax)	325W	330W	335W	340W	345W	350W
Open Circuit Voltage (Voc)	46.0V	46.1V	46.2V	46.3V	46.4V	46.5V
Short Circuit Current (Isc)	9.12A	9.21A	9.33A	9.45A	9.57A	9.68A
Voltage at Nominal Power (Vmp)	37.4V	37.5V	37.6V	37.7V	37.8V	37.9V
Current at Nominal Power (Imp)	8.69A	8.80A	8.91A	9.02A	9.13A	9.24A
Module Efficiency (%)	16.75	17.01	17.26	17.52	17.78	18.04
Operating Temperature	-40°C to +85°C					
Maximum System Voltage	1000V DC					
Fire Resistance Rating	Type 1 (UL 1703)/Class C (IEC61730)					
Maximum Series Fuse Rating	15A					

STC : Irradiance 1000W/m², Cell Temperature 25°C, Air Mass 1.5

ELECTRICAL CHARACTERISTICS AT NOCT

Nominal Power (Pmax)	239W	243W	247W	250W	254W	258W
Open Circuit Voltage (Voc)	42.4V	42.5V	42.6V	42.7V	42.8V	42.9V
Short Circuit Current (Isc)	7.39A	7.46A	7.56A	7.65A	7.75A	7.84A
Voltage at Nominal Power (Vmp)	34.1V	34.2V	34.3V	34.4V	34.5V	34.6V
Current at Nominal Power (Imp)	7.01A	7.11A	7.20A	7.27A	7.37A	7.46A

NOCT: Irradiance 800W/m², Ambient Temperature 20°C, Wind Speed 1 m/s

MECHANICAL CHARACTERISTICS

Cell Type	Monocrystalline 156x156mm (6x6 inches)
Number of Cells	72 (6x12)
Module Dimensions	1956x992x40mm (77.01x39.06x1.57 inches)
Weight	22.5kg (49.6 lbs)
Front Cover	3.2mm (0.13 inches) low-iron tempered Glass
Frame	Anodized
Junction Box	IP67, 3 diodes
Cable	4mm ² (0.006 inches ²), 1000mm (39.37 inches)
Connector	MC4 or MC4 Compatible

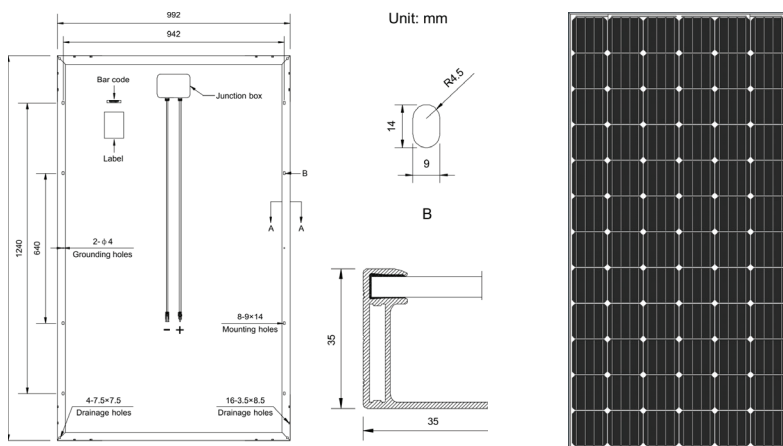
TEMPERATURE CHARACTERISTICS

Nominal Operating Cell Temperature (NOCT)	45°C + 2°C
Temperature Coefficient Of Pmax	-0.41% / °C
Temperature Coefficient Of Voc	-0.31% / °C
Temperature Coefficient Of Isc	0.05% / °C

PACKAGING

Standard Packaging	26 pcs / Pallet
Module Quantity per 20' Container	260pcs
Module Quantity per 40' Container	572/616 HQ

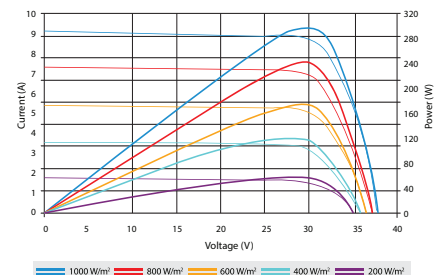
ENGINEERING DRAWINGS



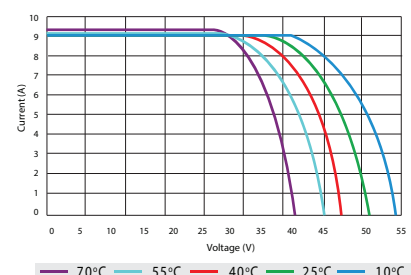
Specifications in this datasheet are subject to change without prior notice.

Also available in all-black.

IV CURVES



Current-Voltage & Power-Voltage Curves At Different Irradiances



Current-Voltage Curves At Different Temperatures