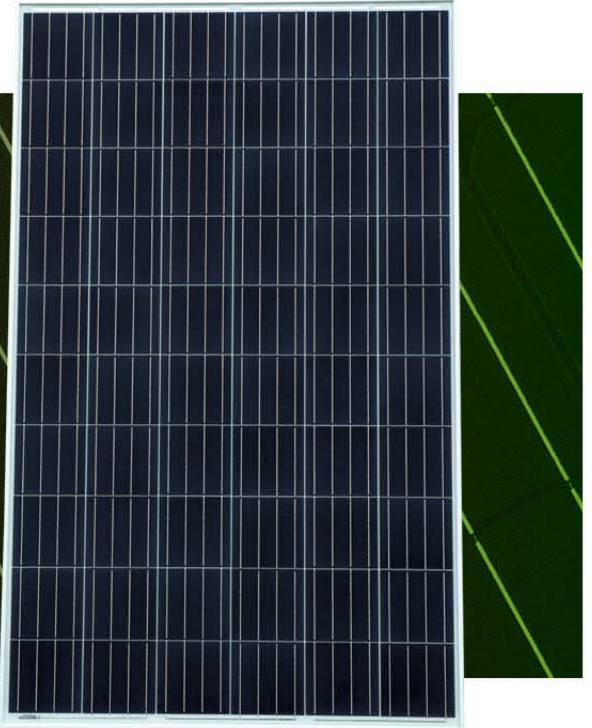


# P60PCS

280W/270W/265W/260W/255W/250W

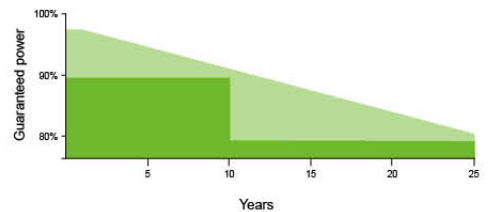
## PRODUCT SPECIFICATION



- Industry leading module power output warranty
- International quality, safety and performance certifications
- Manufacturing facility certified to ISO9001 quality management system standards
- Beautiful appearance, good durability & easy installation
- Special design in accordance with requirements of customers

## WARRANTIES

- 12 years for product defects in materials & workmanship
- 12 years for 90% of warranted minimum power output
- 25 years for 80% of warranted minimum power output
- 25 years linear warranty



QUALITY DESIGN | GREAT DURABILITY | EASY INSTALLATION

# P60PCS 280W/270W/265W/260W/255W/250W PRODUCT SPECIFICATION

Electrical parameters at standard test conditions  
(STC:AM=1.5, 1000W/m<sup>2</sup>, Cells Temperature 25°C )

Typical type	280W	270W	265W	260W	255W	250W
Max power(Pmax)	280	270	265	260	255	250
Max power voltage(Vmp)	32.15	31.47	31.12	30.82	30.73	30.65
Max power current(Imp)	8.71	8.58	8.52	8.44	8.3	8.16
Open circuit voltage(Voc)	38.76	37.81	37.33	36.97	36.85	36.75
Short circuit current(Isc)	9.28	9.11	9.03	8.94	8.79	8.64
Cell efficiency(%)	19.55	18.86	18.51	18.34	17.98	17.60
Module Efficiency(%)	17.21	16.59	16.28	15.98	15.67	15.37
Max system voltage	DC 1000V(TUV)/600V(UL)					
Maximum Series Fuse Rating	15A					

## Mechanical Data

Dimensions	1640×992×35mm (64.57×39.06×1.38 inch)
Weight	18kgs
Front glass	3.2 mm tempered glass
Output cables	4 mm <sup>2</sup> symmetrical lengths 900 mm
Connectors	MC4 compatible IP67
Cell type	Poly Crystalline Silicon 156mmx156mm
Number of cells	60 cells in series

## Temperature Characteristics

Temp.Coeff.of Isc(TK Isc)	0.07% / °C
Temp.Coeff.of Voc(TK Voc)	(-0.36%) / °C
Temp.Coeff.of Pmax(TK Pmax)	(-0.38%) / °C
Operating temperature	(-40~+85%) °C
Normal operating cell temperature	45±2°C

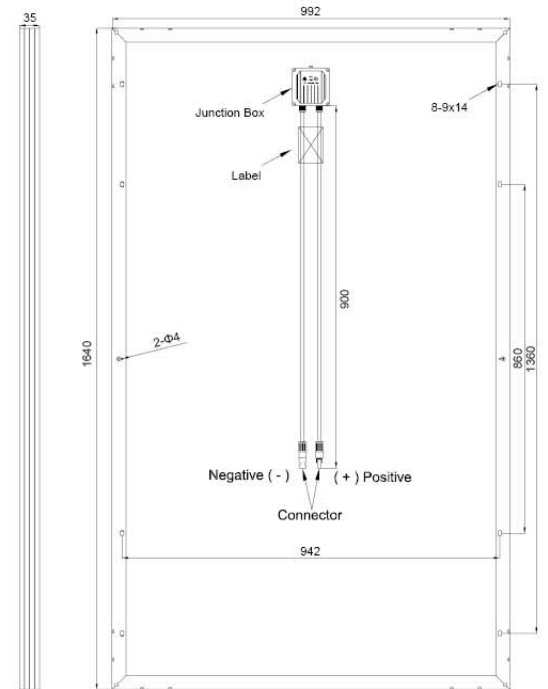
## Packing Configuration

Container	20'GP	40'GP	40'HQ
Pieces per pallet	52	52	60
Pallets per container	6	14	14
Pieces per container	312	728	840

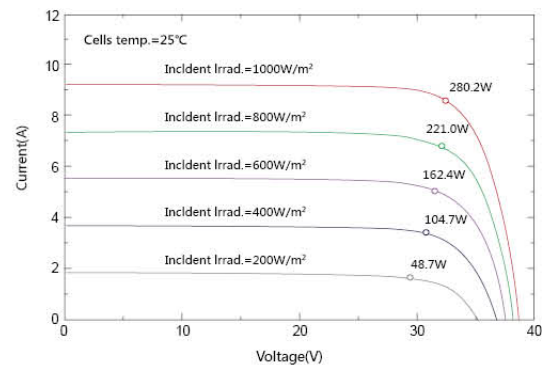
## Tests, Certifications and Warranties

Standard tests	IEC 61215, IEC 61730
System certs	ISO 9001, ISO14001
Certifications	CQC, TUV, CE, MCS, CEC, CHUBB, PPP58042B, Salt Mist&Ammonia Proof, PID FREE
Extreme wind and snow loads testing	Withstand extreme wind(2400 Pascal) and snow loads(5400 Pascal)
Positive tolerance	0~±3%
Junction box	IP67
Warranties	12 years product warranty and 25 years 80% of power

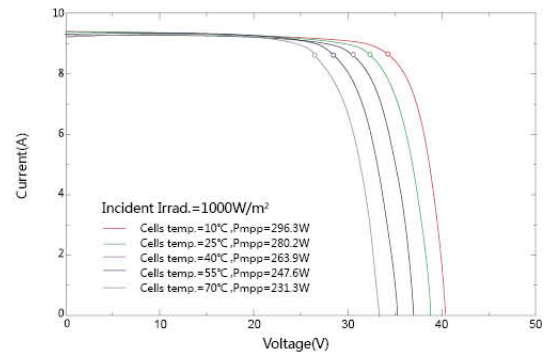
## Dimensions and Structure



## I-V Curve



I-V Curves at different irradiance



I-V Curves at different temperature