



AESTHETIC  
GREEN POWER

## SUNSLATES 6 PHOTOVOLTAIC ROOFING SLATES

01



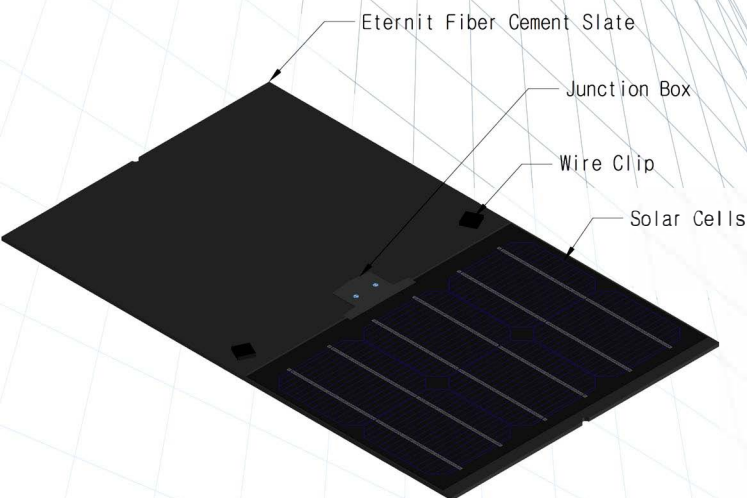
With Sunslates6 you can harness the power of the sun while maintaining the look of a traditional roof.

Features:

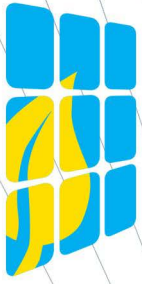
- Larger size allows for faster installation (compared to Sunslates5)
- Class A fire rating
- 20 year power warranty and 25 year weather warranty

## SUNSLATES 6 MATERIAL COMPOSITION

02



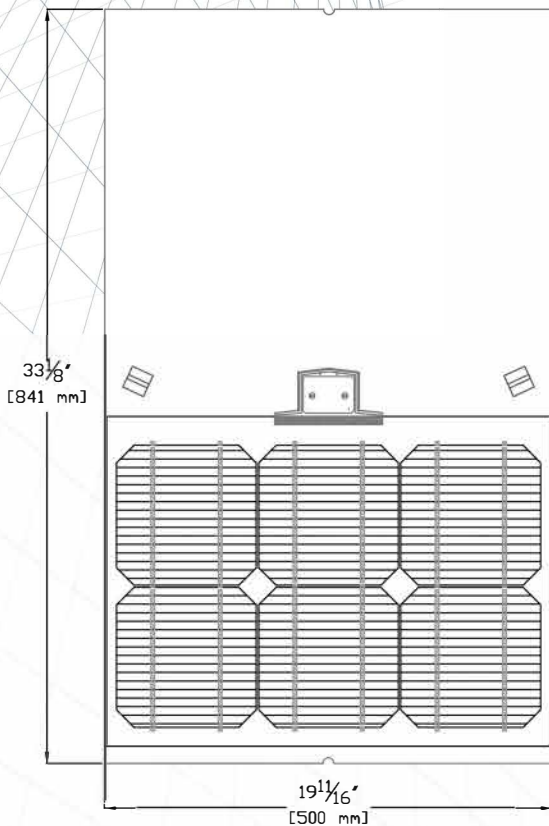
The Sunslate consists of a small photovoltaic module adhered to an Eternit fiber cement roofing slate. The photovoltaic module itself is constructed of solar cells laminated between tempered glass and photovoltaic backsheet.



AESTHETIC  
GREEN POWER

## SUNSLATES 6 SPECIFICATIONS

03



### ELECTRICAL SPECIFICATIONS

MODEL	SS156GM
POWER	23 Watts
$I_{SC}$	8.55 ADC
$V_{OC}$	3.76 VDC
$I_{MPP}$	8.07 ADC
$V_{MPP}$	2.85 VDC
SERIES FUSE RATING	15 Amp
RATED SYSTEM VOLTAGE	600 VDC

All electrical specifications are at Standard Test Conditions (STC):  
1000 W/m<sup>2</sup> irradiance, 25°C temperature, AM 1.5

### MECHANICAL SPECIFICATIONS

DIMENSIONS	33.125" x 19.688" (841 mm x 500 mm)
EXPOSED DIMENSIONS	14.5" x 19.688" (368 mm x 500 mm)
EXPOSED AREA	1.98 SQFT (0.184 SQM)
WEIGHT	14.3 lbs. (6.49 kg)
GLASS	0.125" (3 mm) tempered solar glass
ENCAPSULANT	EVA
CELLS	156 mm mono-crystalline silicon
BACKSHEET	Madico Protekt HD / TPE HD
SLATE MATERIAL	0.236" (6 mm) fiber cement



This product adheres to UL Standard 1703 and is CEC listed.