

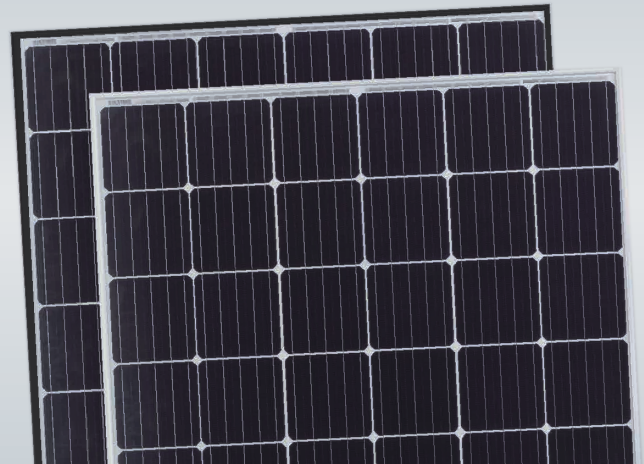
# FL 60M-V

## 270-290 Watt

### MONO CRYSTALLINE MODULE

Positive power tolerance of 0~+3%

ISO9001:2008, ISO14001:2004, OHSAS18001  
certified factory.  
IEC61215, IEC61730 certified products.



## KEY FEATURES



### System Voltage:

The maximum voltage is promoted to 1500V and the module strings are extended by 50% which reduces the overall system BOS.



### 5 Busbar Solar Cell:

5 busbar solar cell adopts new technology to improve the efficiency of modules, offers a better aesthetic appearance, making it perfect for rooftop installation.



### PID RESISTANT:

Limited power degradation of Eagle module caused by PID effect is guaranteed under strict testing condition (85°C/85%RH,96hours) for mass production.



### Low-light Performance:

Advanced glass and solar cell surface texturing allow for excellent performance in low-light environments.



### Severe Weather Resilience:

Certified to withstand: wind load (2400 Pascal) and snow load (5400 Pascal).

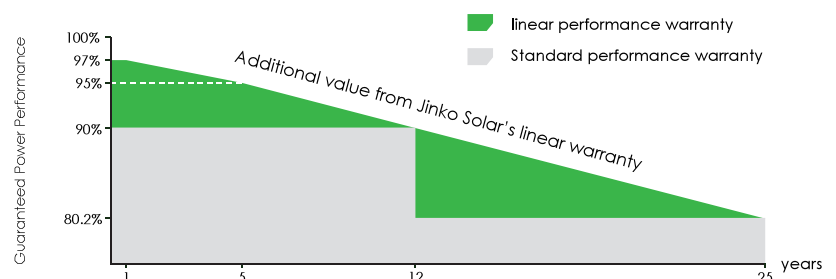


### Durability against extreme environmental conditions:

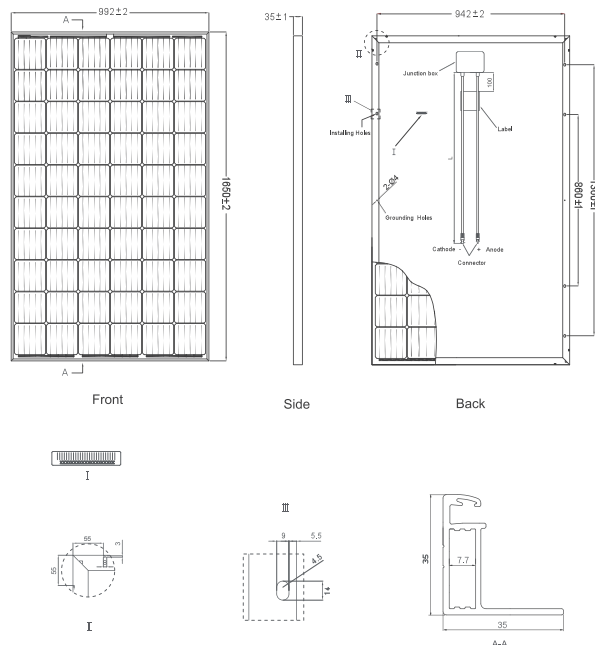
High salt mist and ammonia resistance certified by TUV NORD.

## LINEAR PERFORMANCE WARRANTY

10 Year Product Warranty • 25 Year Linear Power Warranty



## Engineering Drawings



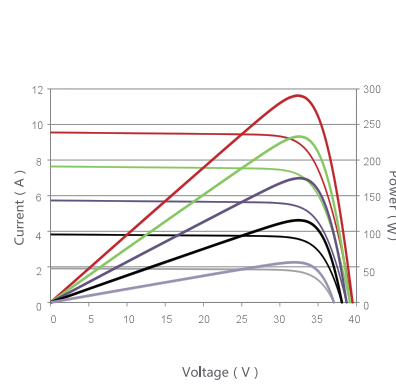
## Packaging Configuration

(Two pallets =One stack)

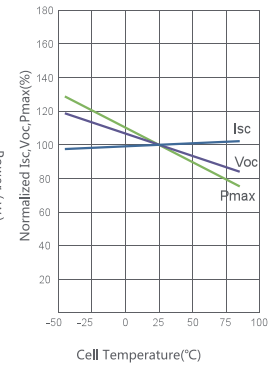
30pcs/pallet , 60pcs/stack, 840 pcs/40'HQ Container

## Electrical Performance & Temperature Dependence

Current-Voltage & Power-Voltage Curves (280W)



Temperature Dependence of Isc, Voc, Pmax



## Mechanical Characteristics

Cell Type	Mono-crystalline 156×156mm (6 inch)
No. of cells	60 (6×10)
Dimensions	1650×992×35mm (65.00×39.05×1.37 inch)
Weight	19.0 kg (41.9 lbs)
Front Glass	3.2mm, Anti-Reflection Coating, High Transmission, Low Iron, Tempered Glass
Frame	Anodized Aluminium Alloy
Junction Box	IP67 Rated
Output Cables	TÜV 1×4.0mm <sup>2</sup> , Length: 900mm or Customized Length

## SPECIFICATIONS

Module Type	SMK 270M-60-V		SMK 275M-60-V		SMK 280M-60-V		SMK 285M-60-V		SMK 290M-60-V	
	STC	NOCT	STC	NOCT	STC	NOCT	STC	NOCT	STC	NOCT
Maximum Power (Pmax)	270Wp	201Wp	275Wp	205Wp	280Wp	209Wp	285Wp	212Wp	290Wp	216Wp
Maximum Power Voltage (Vmp)	31.4V	29.3V	31.6V	29.6V	31.8V	29.7V	32.0V	29.9V	32.2V	30.2V
Maximum Power Current (Imp)	8.60A	6.85A	8.70A	6.93A	8.81A	7.01A	8.90A	7.12A	9.02A	7.15A
Open-circuit Voltage (Voc)	38.4V	35.6V	38.5V	36.0V	38.6V	36.2V	38.7V	36.4V	39.5V	36.6V
Short-circuit Current (Isc)	9.28A	7.45A	9.40A	7.54A	9.49A	7.62A	9.51A	7.72A	9.55A	7.81A
Module Efficiency STC (%)	16.50%		16.80%		17.11%		17.41%		17.72%	
Operating Temperature(°C)					-40°C~+85°C					
Maximum system voltage					1500VDC (IEC)					
Maximum series fuse rating					20A					
Power tolerance					0~+3%					
Temperature coefficients of Pmax					-0.40%/°C					
Temperature coefficients of Voc					-0.29%/°C					
Temperature coefficients of Isc					0.048%/°C					
Nominal operating cell temperature (NOCT)					45±2°C					

\* STC: Irradiance 1000W/m<sup>2</sup> Cell Temperature 25°C AM=1.5

NOCT: Irradiance 800W/m<sup>2</sup> Ambient Temperature 20°C AM=1.5 Wind Speed 1m/s

\* Power measurement tolerance: ± 3%