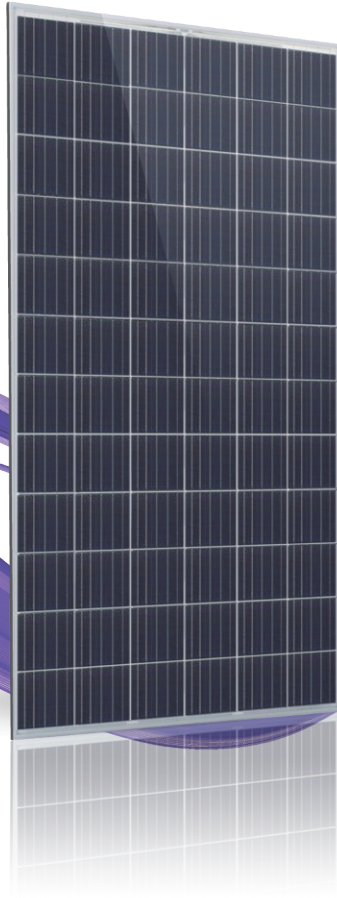




D6P\_H4A / 72 cells  
320W - 345 W  
Multi-Crystalline PV Module

URE Super series module uses URE own high efficiency p-PERC multi crystalline solar cells, and advanced module manufacturing experiences.



## Key Features



Positive power tolerance  
+0 ~ +4.99 watt



100% EL inline inspection  
Better module reliability



Withstand heavy loading  
front load 5400 Pa & rear load 2400 Pa



Ammonia resistance  
According to IEC 62716 Ed. 1



Excellent low light performance  
3.5% relative eff. Reduction at low-irradiance (200W/m<sup>2</sup>)



## Electrical Data

Model - STC		D6P320H4A	D6P325H4A	D6P330H4A	D6P335H4A	D6P340H4A	D6P345H4A
Maximum Rating Power (Pmax)	[W]	320	325	330	335	340	345
Module Efficiency	[%]	16.5	16.7	17.0	17.3	17.5	17.8
Open Circuit Voltage (Voc)	[V]	46.15	46.38	46.62	46.85	47.16	47.28
Maximum Power Voltage	[V]	37.14	37.29	37.46	37.65	37.83	38.00
Short Circuit Current (Isc)	[A]	9.15	9.24	9.33	9.38	9.43	9.49
Maximum Power Current	[A]	8.63	8.72	8.82	8.90	8.99	9.08

\*Standard Test Condition (STC): Cell Temperature 25 °C, Irradiance 1000 W/m<sup>2</sup>, AM 1.5

\*Values without tolerance are typical numbers.

## Mechanical Data

Item	Specification
Dimensions	1956 mm (L) <sup>1</sup> x 992 mm (W) <sup>1</sup> x 35 mm (D) <sup>2</sup> / 77" (L) <sup>1</sup> x 39.1" (W) <sup>1</sup> x 1.38" (D) <sup>2</sup>
Weight	23 kg / 50.7 lbs
Solar Cell	72 multicrystalline 6" silicon cells (size: 156.75 x 156.75 mm)
Front Glass	Anti-reflective tempered solar glass, 3.2mm thickness
Cell Encapsulation	EVA (Ethylene-Vinyl-Acetate)
Back Cover	Composite film, white
Junction Box	IP 67 rated
Frame	Anodized aluminum frame, original or black
Packaging Configuration	30 pcs Per Pallet, 720 pcs per 40' HQ container

<sup>1</sup> : With assembly tolerance of ± 2 mm [ ± 0.08"]

<sup>2</sup> : With assembly tolerance of ± 0.8 mm [ ± 0.03"]

## Operating Conditions

Item	Specification
Mechanical Load	5400 Pa (Certified by TUV Rheinland)
Maximum System Voltage	TUV/UL 1000 VDC
Series Fuse Rating	15 A
Operating Temperature	-40 to 85 °C

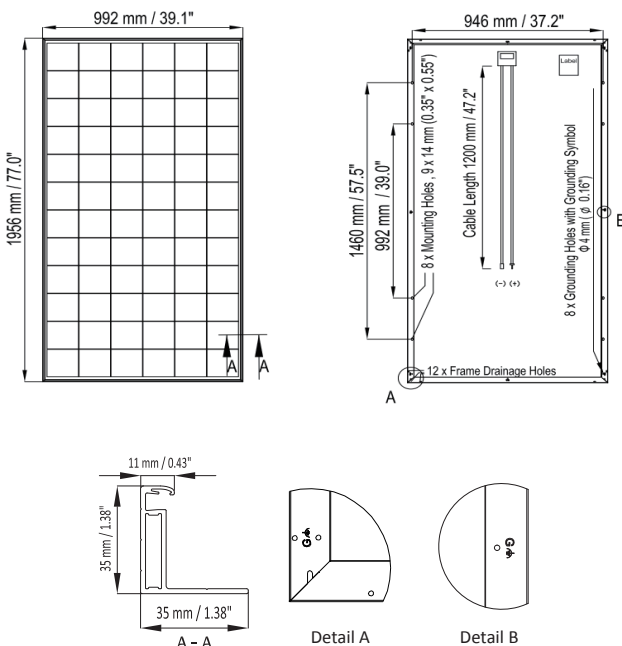
## Temperature Characteristics

Item	Specification
Nominal Module Operating Temperature	44°C ± 2°C
Temperature Coefficient of Isc	0.07 % / °C
Temperature Coefficient of Voc	-0.30 % / °C
Temperature Coefficient of Pmax	-0.38 % / °C

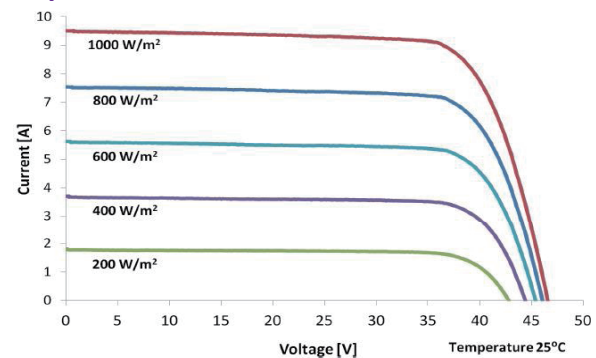
\*Nominal module operating temperature (NMOT): Air mass AM 1.5, irradiance 800W/m<sup>2</sup>, temperature 20°C, windspeed 1 m/s.

\*Reduction in efficiency from 1000W/m<sup>2</sup> to 200W/m<sup>2</sup> at 25°C: 3 ± 2%.

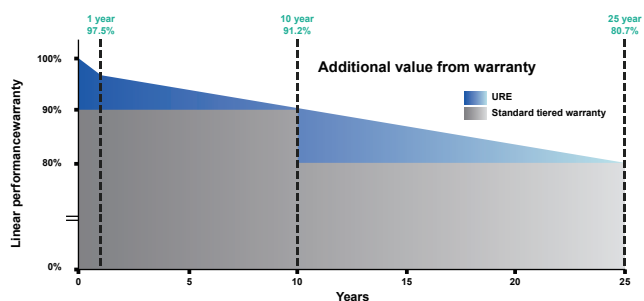
## Engineering Drawing (mm)



## Dependence on Irradiance



## Reliability with Warranty



Output warranty  
**25**  
Years

Product Guarantee  
**10**  
Years

For more information, please visit us at [www.urecorp.com](http://www.urecorp.com)