

# PHOTOVOLTAIC MODULE TS-P724



310 - 330 Wp  
72 POLYCRYSTALLINE CELLS

Teknik Solar modules combine the most advanced technology with high reliability in manufacture to offer you a product meant for high achievements.



**SIMPLY  
MORE POWER**

Teknik Solar module TS-P724 is designed to ensure high yields to meet the needs of larger and power-intensive installations.



**THOROUGHLY TESTED  
AND MADE IN TURKEY**

The manufacturing processes of **Teknik Solar** modules follow rigorous quality criteria to provide a long-lasting product made in Europe

## COMPREHENSIVELY CERTIFIED

TEKNIK solar modules and production facilities are compliant with the the latest standards to guarantee safety and reliability.

## YOUR ADVANTAGE AT A GLANCE

Premium solar panel with quality components  
High efficiency - up to 330 Wp

10 years Product warranty  
25 years linear Power warranty

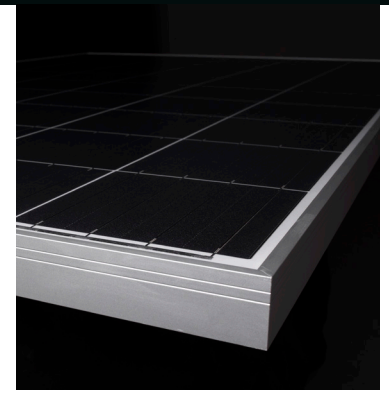
More on: [www.tekniksolar.com](http://www.tekniksolar.com)

# PHOTOVOLTAIC MODULE TS-P724



## ELECTRICAL CHARACTERISTICS AT STC<sup>1</sup>

Nominal Power (P <sub>max</sub> )	[Wp]	310	315	320	325	330
Tolerance on Nominal Power P <sub>max</sub> <sup>2</sup>	[Wp]	-0 / +5	-0 / +5	-0 / +5	-0 / +5	-0 / +5
Maximum Power Voltage (V <sub>mp</sub> )	[V]	37.0	37.6	38.23	35.70	35.82
Maximum Power Current (I <sub>mp</sub> )	[A]	8.42	8.44	8.46	9.11	9.23
Open Circuit Voltage (V <sub>oc</sub> )	[V]	45.0	45.4	45.9	45.59	45.69
Short Circuit Current (I <sub>sc</sub> )	[A]	8.92	8.95	8.99	9.70	9.80
Module Efficiency (η <sub>m</sub> )		16.0%	16,2%	16.5%	15.5%	15.7%
Maximum System Voltage	[V]	1000	1000	1000	1000	1000
Series Fuse Maximum Rating	[A]	15	15	15	15	15



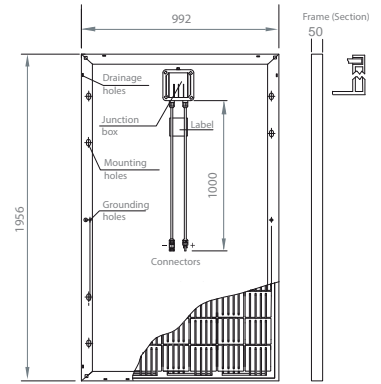
## TEMPERATURE CHARACTERISTICS

NOCT	45°C ± 2°C
P <sub>max</sub> Temp. Coefficient (γ)	-0.39 %/°C
V <sub>oc</sub> Temp. Coefficient (β)	-0.32 %/°C
I <sub>sc</sub> Temp. Coefficient (α)	0.05%/°C
Operating temperature	-40°C to + 85°C



## MECHANICAL CHARACTERISTICS

Solar cells	72 (6 x 12) polycrystalline silicon, 156 x 156 mm (6") cells
Front glass	3.2 mm (0.13") high-transparency AR coating glass
Backsheet	White backsheet
Encapsulant	EVA (Ethylene-Vinyl Acetate)
Frame	Anodized aluminum alloy, silver
Junction box	IP67 rated, 3 bypass diodes
Cables	UV resistant cable 1000 mm (39.37"), sec.4.0 mm <sup>2</sup>
Connectors	MC4 compatible connectors
Dimensions	1956 mm x 992 mm x 50 mm
Weight	24 kg (52.9 lbs)
Maximum load	Wind: 2400 Pa / Snow: 5400 Pa



## PACKING CONFIGURATION

Packing configuration	27 pcs / pallet
Loading Capacity	594 pcs / 40 ft HC

## WARRANTIES

Product warranty	10 years
Performance warranty	25 years, linear <sup>3</sup>

Module dimensions in the technical picture are expressed in mm with tolerance ±2 mm (±0.079")

1 - Standard Test Conditions (STC): Irradiance 1000 W/m<sup>2</sup>, Air Mass AM = 1.5, Cell Temperature 25°C; Power measurement uncertainty within ± 3%.

2 - photovoltaic modules are classified according to a principle of positive power tolerance: the Power Output measured at STC of the delivered modules exceeds their assigned Nameplate Nominal Power at STC within a power tolerance range between -0 Wp and +5 Wp.

3 - No less than 97% of the minimum "Peak Power at STC" in the first year; power output decline no more than 0.7% per year thereafter)

## CONTACT US

Teknik Solar Enerji Aydınlatma Sanayi T.C. LTD. T. I Emek Yemez Mah. Okçu Musa Cad. No:2 Kat:3 | hane | istanbul | Turkey

Tel: +90 212 235 0050 | Fax: +90 212 235 0052 | Mail: info@tekniksolar.com

www.tekniksolar.com