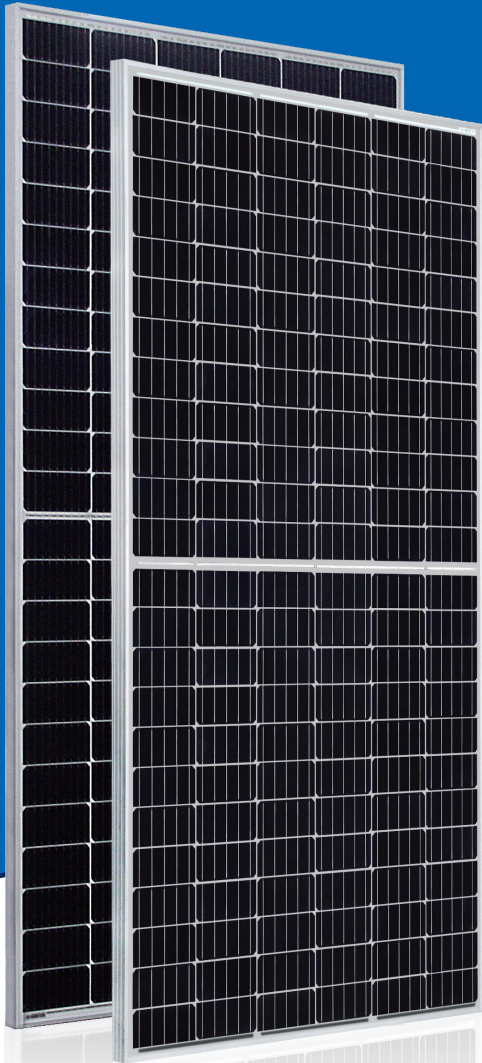


AstroTwins™

Enjoy the Energy of the Universe



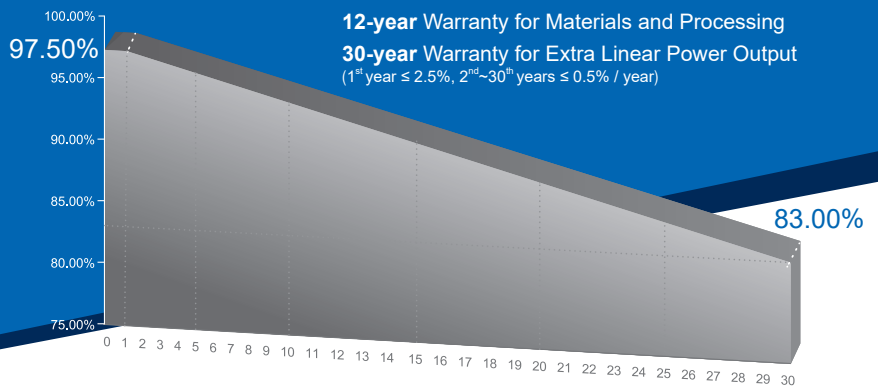
Multi-Busbar Module could be the option

380W~395W

P-type Monocrystalline PV Module

CHSM72M(DG)/F-BH Series (156.75)

CHSM72M(DG)/F-BH is bifacial module with white glazed glass



KEY FEATURES

- OUTPUT POSITIVE TOLERANCE**
 Guaranteed 0~+5W positive tolerance ensures power output reliability.
- ENHANCED FIRE PERFORMANCE**
 Fire Class A certified according to IEC standard.
- EXCELLENT WEATHER RESISTANCE**
 Reduces the cell micro-crack and extended product warranty.
- BIFACIAL POWER**
 The backside makes use of the reflected and scattered light from the surroundings, the modules can yield up to 5%~30% power more, depending on the albedo.
- REDUCE INTERNAL MISMATCH LOSS**
 Reduces mismatch loss and improves output.
- APPLICABLE FOR MULTI DIFFERENT ENVIRONMENTS**
 The wide range of applications, such as BIPV, vertical installation, snow area, high humidity area and strong sandstorm area, etc.
- SNAIL TRAIL RESISTANCE**
 Reduces the probability of snail trails with zero water vapor transmittance.

COMPREHENSIVE CERTIFICATES



First solar company which passed the TUV Nord IEC/TS 62941 certification audit.

For Global Market



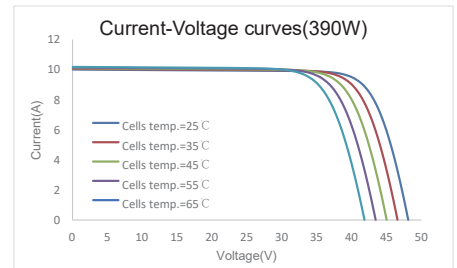
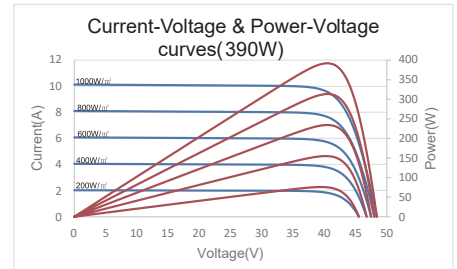
ASTRONERGY
A CHNT COMPANY

ELECTRICAL SPECIFICATIONS

Power rating (front)	380 Wp		385 Wp		390 Wp		395 Wp	
	Front	Back	Front	Back	Front	Back	Front	Back
STC rated output (P_{mpp}/Wp)*	380	268	385	271	390	275	395	278
Rated voltage (V_{mpp}/V) at STC	39.75	39.95	39.98	40.18	40.21	40.42	40.44	40.65
Rated current (I_{mpp}/A) at STC	9.56	6.70	9.63	6.75	9.70	6.79	9.77	6.84
Open circuit voltage (V_{oc}/V) at STC	47.52	46.12	47.70	46.29	47.88	46.47	48.06	46.64
Short circuit current (I_{sc}/A) at STC	9.98	7.00	10.06	7.05	10.14	7.11	10.22	7.17
Module efficiency	18.9%	13.3%	19.1%	13.5%	19.4%	13.6%	19.6%	13.8%
Temperature coefficient (P_{mpp})	- 0.3528%/°C							
Temperature coefficient (I_{sc})	+0.0400%/°C							
Temperature coefficient (V_{oc})	- 0.2769%/°C							
Nominal module operating temperature (NMOT)	44±2°C							
Maximum system voltage (IEC/UL)	1500V _{DC}							
Number of diodes	3							
Junction box IP rating	IP 68							
Maximum series fuse rating	20 A							

STC: Irradiance 1000W/m², Cell Temperature 25°C, AM=1.5

CURVE



ELECTRICAL SPECIFICATIONS (Integrated power)

P_{mpp} gain	P_{mpp}	V_{mpp}	I_{mpp}	V_{oc}	I_{sc}
5%	410 Wp	40.21 V	10.18 A	47.88 V	10.65 A
10%	429 Wp	40.21 V	10.67 A	47.88 V	11.15 A
15%	449 Wp	40.11 V	11.18 A	47.98 V	11.66 A
20%	468 Wp	40.11 V	11.67 A	47.98 V	12.17 A
25%	488 Wp	40.11 V	12.15 A	47.98 V	12.68 A

Electrical characteristics with different rear power gain (reference to 390W)

MECHANICAL SPECIFICATIONS

Outer dimensions (L x W x H)	2018 x 998 x 30 mm 79.45 x 39.29 x 1.18 in
Module composition	Glass / POE / Glass
Glass thickness	2.5 mm / 0.098 in
Cable length (IEC/UL)	Portrait: 350 mm (13.78 in) Landscape: 1200 mm (47.24 in)
Cable diameter (IEC/UL)	4 mm ² / 12 AWG
① Maximum mechanical test load	5400 Pa (front) / 2400 Pa (back)
Fire performance (IEC/UL)	Class A (IEC) or Type 3 (UL)
Connector type (IEC/UL)	MC4 compatible

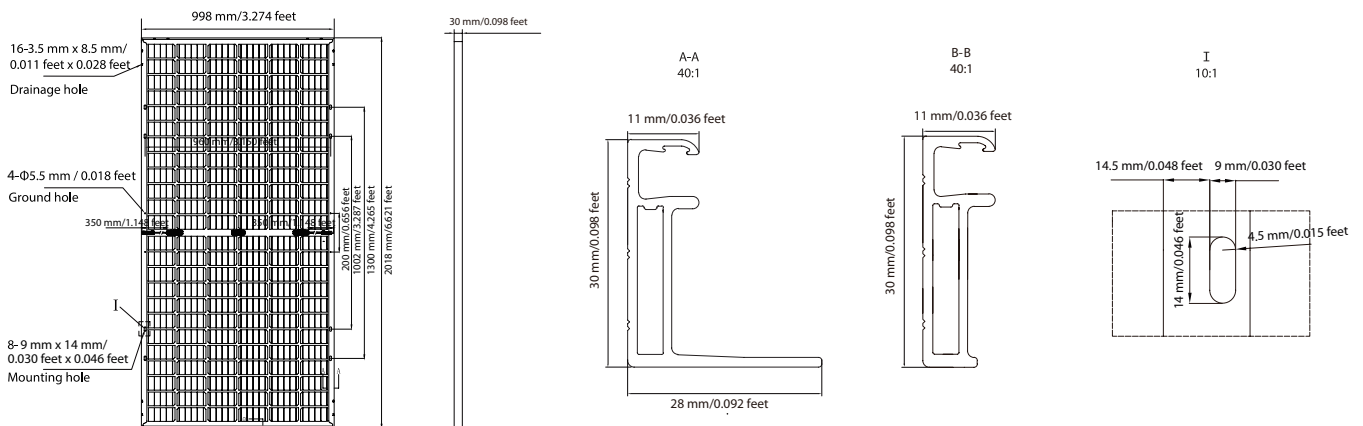
① Refer to Astronergy crystalline installation manual or contact technical department.
Maximum Mechanical Test Load=1.5×Maximum Mechanical Design Load.

PACKING SPECIFICATIONS

① Weight (module only)	30.1 kg / 66.36 lbs
② Packing unit	36 pcs / box
Weight of packing unit (for 40'HQ container)	1131 kg / 2493 lbs
Number of modules per 40'HQ container	792 pcs

① Tolerance +/- 1.0kg
② Subject to sales contract

MODULE DIMENSION DETAILS



© Chint Solar (Zhejiang) Co., Ltd. Reserves the right of final interpretation. please contact our company to use the latest version for contract.