



www.bqltd.com
www.bqsolartech.com
sales@bqsolartech.com

BQ-MON072



BQ-MONO72

375-390W

Product With Green Energy

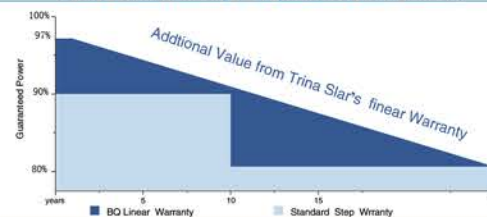


Certificates



BQ Linear Warranty Standard Step Warranty

10 Years Product Warranty 25 years Linear Power Warranty



KEY FEATURES



POWER RANGE

0~+3% Plus Power Tolerance



PID RESISTANT



SALT MIST RESISTANT



AMMONIA RESISTANT



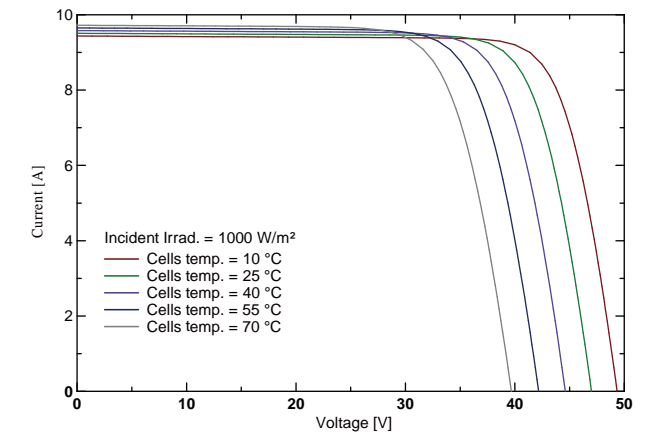
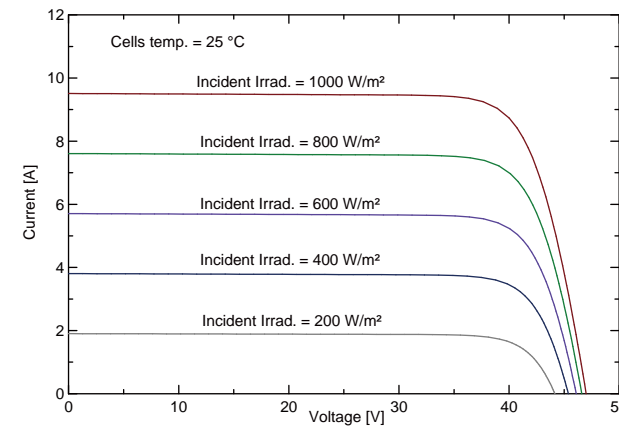
HIGH STRENGTHENED DESIGN

2400Pa Wind Pressure, 5400Pa Snow Crush Tolerable

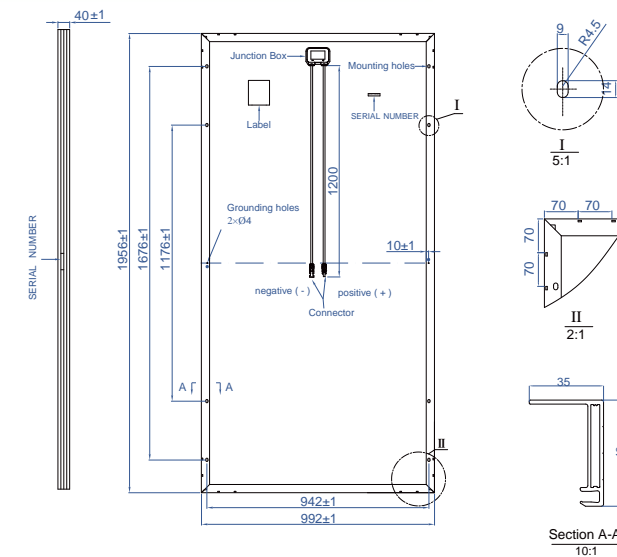
Electrical Characteristics

Item NO.		BQ375-72PM	BQ380-72PM	BQ385-72PM	BQ390-72PM
Nominal power	Pm (WP)	375	380	385	390
Open circuit voltage	Voc (V)	48.47	48.75	49.04	49.35
Short-circuit current	Isc (A)	10.06	10.12	10.17	10.22
Voltage at max power	Vmp (V)	39.27	39.59	39.9	40.21
Current at max power	Imp (A)	9.55	9.6	9.65	9.70
Module efficiency	(%)	19.0	19.3	19.5	19.8
System voltage	(V)	1500 V			
Temp. coefficient Voc	(%/°C)	-0.30%/°C			
Temp. coefficient Isc	(%/°C)	+0.05%/°C			
Temp. coefficient Pm	(%/°C)	-0.39%/°C			
Operating temp.	(°C)	-40 ~ +85°C			
NOCT	(°C)	45°C (±2°C)			

ELECTRICAL CHARACTERISTICS



PHYSICAL CHARACTERISTICS



MECHANICAL SPECIFICATIONS

External Dimension	1956 x 992 x 40mm
Weight	21.5kg/22.0kg
Solar Cells	156.75 x 156.75 mm (72pcs)
Front Glass	3.2 mm AR coating tempered glass, low iron
Frame	Anodized aluminium alloy
Junction Box	IP68, 3 diodes
Output Cables	4.0 mm², cable length: 1200 mm
Connector	MC4 Compatible
Mechanical Load	5400 Pa

PACKING CONFIGURATION

External Dimension	1956 x 992 x 40mm	
Container	20' GP	40' GP
Pieces per Pallet	28	28
Pallets per Container	14	22
Pieces per Container	392	616

