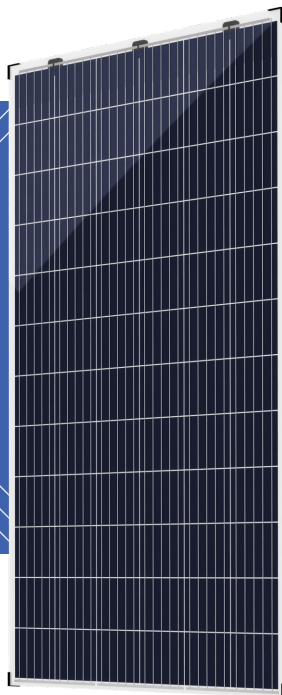
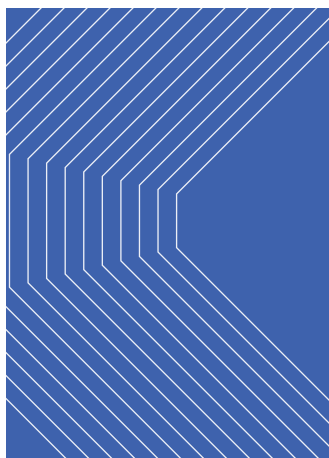


## WAYSOLAR DOUBLE-GLASS MODULE



**72CELLS/5BB**  
PREMIUM MONO MODULES

**380-395W**  
POWER OUTPUT

**19.7%**  
MAX. EFFICIENCY



10% WHITE  
TRANSPARENCY OPAQUE



### COMPANY PROFILE

Ningbo RayTech New Energy Materials Co., Ltd. (RayTech) focuses on New Energy & New Materials manufacturing, and integrates Product R&D, Designing, Manufacturing, Sales, After-sale Service as a "One-stop Product & Service Solution Provider" enterprises. The company's headquarter is based in Hangzhou Bay New District, Ningbo City, Zhejiang Province, China. RayTech's main focus is in two sectors: "solar modules manufacturing & solar system integration" and "smart glass panel materials". The company has a sophisticated Research & Development team, a State Key Laboratory, and an AI-integrated fully-automated factory.

The company has an annual solar module production capacity of 1.2GW, producing both single-glass and double-glass solar modules. The company's smart glass panel material annual manufacturing capacity is 1 million square meters. The smart glass panels support multiple functions such as spatial separation, remote AI control, light brightness and temperature control. The company's factories are located in Zhejiang, Jiangsu and Shandong.

RayTech is dedicated to providing products that can bring optimized values to the customers. The company's sustainable development concept are "Solar makes life better" and "Let modern science and technology perfectly integrate with the nature". Core corporate culture is "Be Pragmatic, Inclusive, Refined and Innovative".

### PRODUCT FEATURES



#### Exceptional Product Durability

- High Resistance to PID;
- Low Risk of Micro-cracks; Zero Snail Trails Probability;



#### Higher-Than-Ever ROI

- 158.75mm Large Cells, Higher Power Gain; Annual Degradation < 0.5%, 30-year Linear Performance Warranty;
- Lower LCOE, Higher IRR;



#### Working Condition Compatibility & Safety

- High Resistance to High Temp., High Humidity, Sand, Acid and Alkali Environment;
- 5400Pa Snow Loading, 2400Pa Wind Loading;
- Passed Hail Test (35mm Diameter, 97km/h);
- Class-A Fireproofing;

### CERTIFICATION



### CONTACT US

Ningbo Raytech New Energy Materials Co.,Ltd  
Address: Huyong Industry Park, 18 Qiyuan Road, Hangzhou Bay New District, Ningbo City, Zhejiang, China  
Tel: +86-400-155-9909  
Website: [www.raytm.com.cn](http://www.raytm.com.cn)  
Email: [sales@raytm.cn](mailto:sales@raytm.cn)

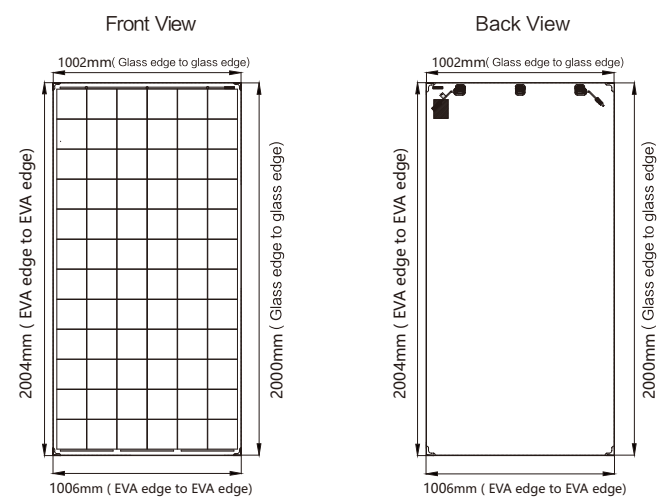


Wechat Public Account

Premium Double-Glass Mono Module (72 Cells): 380-395W

ENGINEERING DRAWING

MECHANICAL SPECIFICATIONS



Cell Type	Mono crystalline (158.75mm*158.75mm)
Solar Cells	72(6*12)
Module Dimension [mm]	2000*1002*6 (2004*1006*6with edge banding)
Weight [Kg]	28.0
Front Glass [mm]	2.5 Semi tempered coated glass
Interlayer	EVA/POE/PVB
Back Glass [mm]	2.5 Semi tempered glass
Junction Box	Ip67 Rated, 3 by-pass diodes
Connector	Multi-Contact MC4(or equivalent)
Frame	No frame
Maximum Load Capacity [Pa]	2400(wind load)/5400(snow load)

ELECTRICAL CHARACTERISTICS

			DM72-380	DM72-385	DM72-390	DM72-395
STC: Air Mass AM1.5, Ir-radiance 1000W/m <sup>2</sup> Cell temperature 25°C	Maximum Power at STC [Pmax]	[W]	380	385	390	395
	Open Circuit Voltage [Voc]	[V]	48.47	48.79	49.04	49.34
	Short Circuit Current [Isc]	[A]	9.98	10.06	10.13	10.20
	Voltage at Maximum Power point[Vm]	[V]	39.92	40.22	40.48	40.76
	Current at Maximum Power point[Im]	[A]	9.52	9.57	9.63	9.69
	Power Tolerance	[%]	0~+3%			
	Module Efficiency	[%]	18.9	19.2	19.4	19.7
NMOT: Air Mass AM1.5, Ir-radiance 800W/m <sup>2</sup> Ambient temperature 20°C, wind speed 1m/s.	Maximum Power at NMOT [Pmax]	[W]	281	285	289	292
	Open Circuit Voltage [Voc]	[V]	44.82	45.11	45.35	45.62
	Short Circuit Current [Isc]	[A]	8.05	8.11	8.17	8.23
	Voltage at Maximum Power point[Vm]	[V]	36.28	36.55	36.79	37.04
	Current at Maximum Power point[Im]	[A]	7.75	7.79	7.84	7.89
	Power Tolerance	[%]	0~+3%			

WORKING CONDITIONS

TEMPERATURE COEFFICIENTS

Maximum System Voltage	[V]	1000 DC(IEC) 1500 DC(IEC)
Operating Temperature	[°C]	-40~+85
Nominal Operating Cell Temperature	[°C]	45±3
Maximum rated current	[A]	15

Temperature Coefficient of Pmax	[%/°C]	-0.42
Temperature Coefficient of Voc	[%/°C]	-0.33
Temperature Coefficient of Isc	[%/°C]	0.04

PACKAGE CONFIGURATION	
Per box 30 pieces	40" HQ 660 pieces

ELECTRICAL CURVES

LINEAR PERFORMANCE WARRANTY

