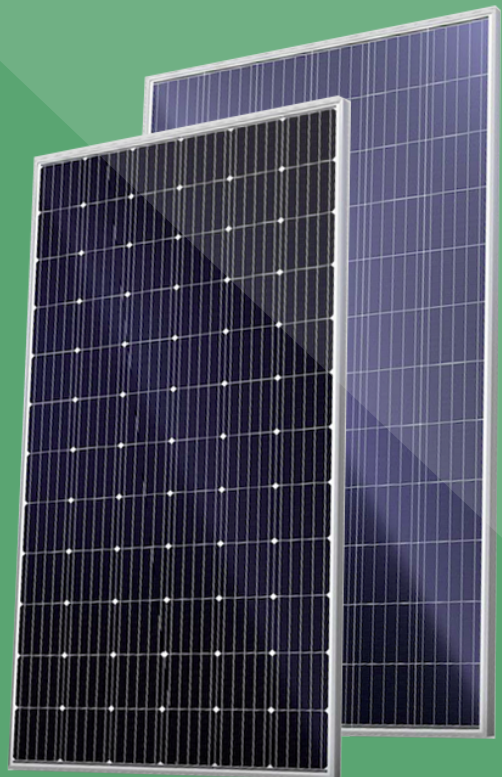


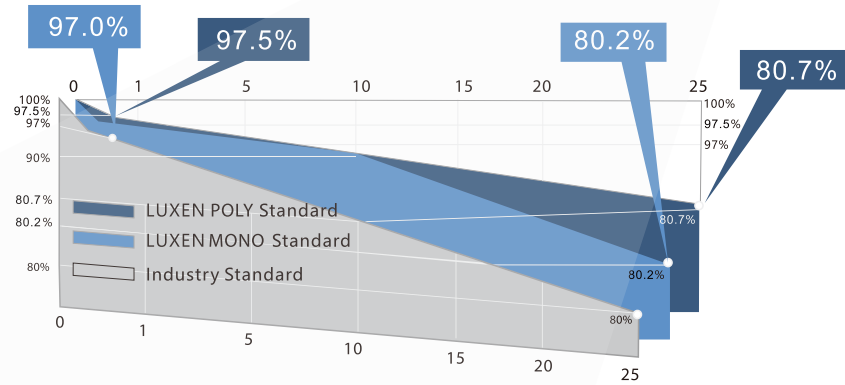
# LUXMAX<sup>®</sup>

LUXMAX<sup>®</sup> Plus series superhigh efficiency modules adopt advanced PERC technology (Passivated Emmitter Rear Contact technology). Its higher conversion efficiency and better anti-PID performance bring installers the maximize power yield per unit area. They can meet your very strict requirement on quality and efficiency of modules.

## 72 cells Bigger PERC Cell



### LINEAR PERFORMANCE WARRANTY



ISO9001:2015 management systems



IEC61215 & IEC61730 standard quality



Smaller electric current, less CTM loss  
Lower risk of hot spot



Wind load up to 3800Pa  
Snow load up to 5400Pa



0-5W positive powersorting



Stable performance under weaklight conditions



25-year power warranty  
10-year product warranty



# LUXEN

### MONO

	LNSF-385M		LNSF-390M		LNSF-395M		LNSF-400M		LNSF-405M	
	STC	NOCT	STC	NOCT	STC	NOCT	STC	NOCT	STC	NOCT
Maximum Power (Pmax)	385W	285W	390W	288W	395W	291W	400W	294W	405W	297W
Open Circuit Voltage (Voc)	48.62V	45.76V	48.94V	45.97V	49.26V	46.17V	49.58V	46.38V	49.90V	46.58V
Short Circuit Current (Isc)	10.18A	8.02A	10.24A	8.06A	10.29A	8.10A	10.35A	8.14A	10.40A	8.18A
Voltage at Maximum Power (Vmpp)	39.81V	37.70V	40.11V	37.89V	40.40V	38.09V	40.68V	38.28V	40.96V	38.47V
Current at Maximum Power (Impp)	9.67A	7.56A	9.72A	7.60A	9.78A	7.64A	9.83A	7.68A	9.89A	7.72A
Module Efficiency(%)	19.53%		19.79%		20.04%		20.29%		20.55%	

### POLY

	LNSF-335P		LNSF-340P		LNSF-345P		LNSF-350P		LNSF-355P	
	STC	NOCT	STC	NOCT	STC	NOCT	STC	NOCT	STC	NOCT
Maximum Power (Pmax)	335W	248W	340W	252W	345W	256W	350W	260W	355W	264W
Open Circuit Voltage (Voc)	46.11V	43.43V	46.42V	43.63V	46.76V	43.82V	47.06V	44.01V	47.36V	44.20V
Short Circuit Current (Isc)	9.43A	7.46A	9.50A	7.53A	9.56A	7.61A	9.63A	7.68A	9.69A	7.76A
Voltage at Maximum Power (Vmpp)	37.49V	35.40V	37.78V	35.59V	38.04V	35.75V	38.32V	35.94V	38.59V	36.12V
Current at Maximum Power (Impp)	8.94A	7.01A	9.00A	7.08A	9.07A	7.16A	9.13A	7.23A	9.20A	7.31A
Module Efficiency(%)	17.00%		17.25%		17.50%		17.76%		18.01%	

### Packing Configuration

Container	20'GP	40'GP
Pieces per pallet	26	26
Pallets per container	10	22
Pieces per container	260	572

### Mechanical Characteristics

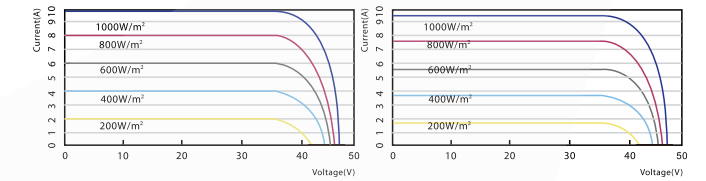
Solar Cell	Mono/Poly
No. of Cells	72(6×12)
Dimensions	1979x996x40mm
Weight	23.5 kgs
Front	Glass 3.2mm tempered glass
Frame	Anodized aluminium alloy
Junction Box	IP68 rated(3 by pass diodes)
Output Cables	4.0mm <sup>2</sup> , symmetrical length (-)900mm and (+)900mm
Connectors	MC4 compatible
Mechanical load test	5400Pa

# 72 cells

# LUXEN

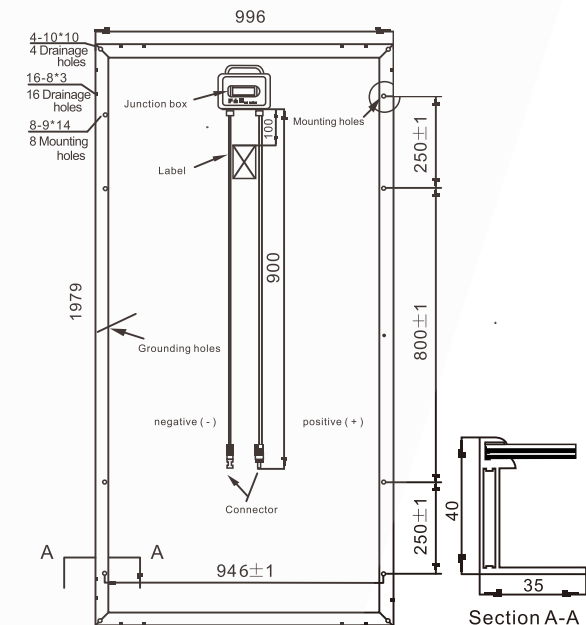
LNSF-395M/I-V

LNSF-350P/I-V



STC: Irradiance 1000W/m<sup>2</sup>, cell temperature 25°C, AM1.5G  
NOCT: Irradiance 800W/m<sup>2</sup>, ambient temperature 20°C, wind speed 1m/s, AM1.5G

Operating Module Temperature	-40°C to +85°C
Maximum System Voltage	1500V DC(IEC) 1000V DC(UL)
Maximum Series Fuse Rating	20A
Power Tolerance	0/+5W
Temperature Characteristics	
Nominal Operating Cell Temperature (Noct)	45±2°C
Temperature Coefficient of Pmax	-0.36%/°C
Temperature Coefficient of Voc	-0.29%/°C
Temperature Coefficient of Isc	0.05%/°C



Note: Due to continuous technical innovation, R&D and improvement, technical data above mentioned may be of modification accordingly. LUXEN SOLAR have the sole right to make such modification at anytime without further notice.

LUXEN SOLAR ENERGY CO., LTD  
T: +86 512 6708 1572  
F: +86 512 6708 1570  
sales@luxensolar.com  
www.luxensolar.com

