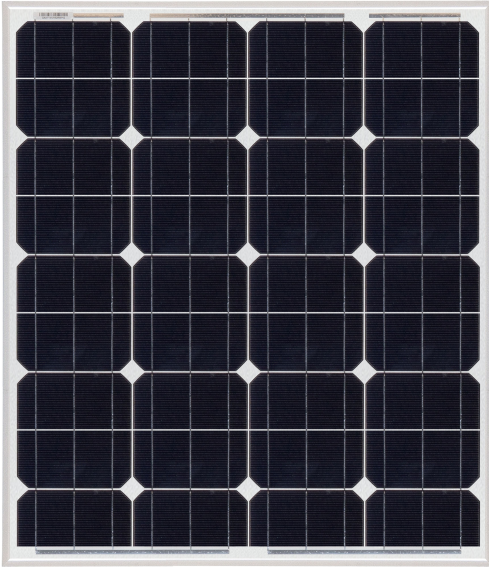




IGNITE THE POWER OF NATURE

Monocrystalline Module --small size 70Watt

Model (RD70TU-18MD) Specifications



Electrical Data

Maximum Power(W)	70W
Optimum Power Voltage(Vmp)	17.82V
Optimum Operating Current(Imp)	3.93A
Open Circuit Voltage(Voc)	22.54V
Short Circuit Current(Isc)	4.20A
Cell Efficiency	16.76%
Module Efficiency	13.61%
Tolerance Wattage	0~+3%
NOCT	47°C +/-2°C

Benefits

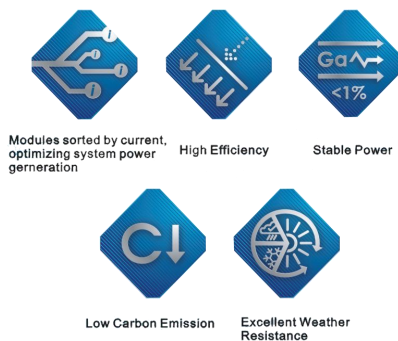
☐ High efficiency solar cells with high transmission and textured glass are delivering high efficiency for modules;

☐ Bypass diode minimizes the power drop caused by shade;

☐ Tempered glass, EVA resin, and weatherproof film, plus aluminum frame for extended outdoor use;

☐ Modules independently tested to ensure conformance with certification and regulatory standards;

☐ Manufacturing facility certified to ISO 9001 quality management system standards.



Applications

- ☐ On-grid residential roof-tops
- ☐ On-grid commercial/industrial roof-tops
- ☐ Solar power stations
- ☐ Other on-grid applications

Temperature Coefficients

Temperature Coefficients of Isc(%)/°C	+0.04
Temperature Coefficients of Voc(%)/°C	-0.38
Temperature Coefficients of Pm(%)/°C	-0.47
Temperature Coefficients of Im(%)/°C	+0.04
Temperature Coefficients of Vm(%)/°C	-0.38



IGNITE THE POWER OF NATURE

Monocrystalline Module --small size 70Watt

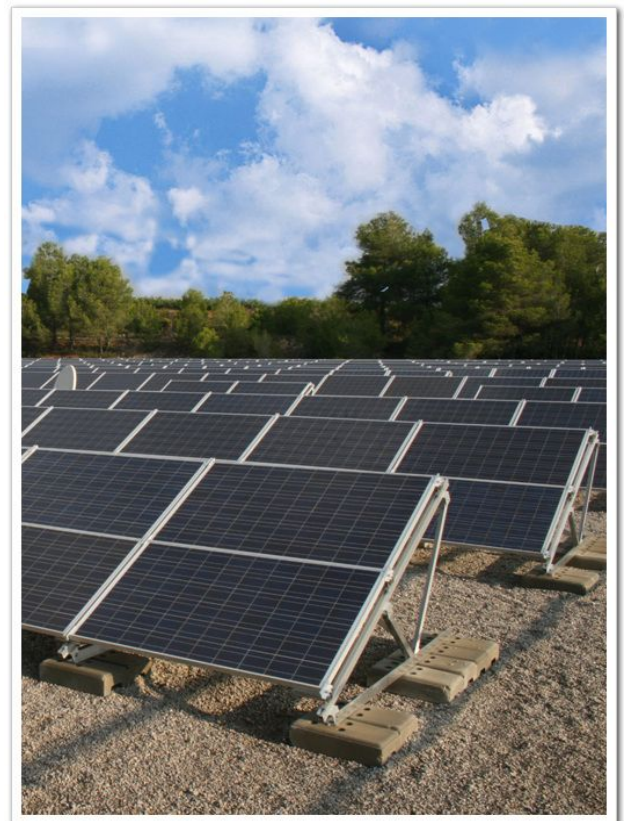
Components & Mechanical

Solar Cell	156*78 Mono
Number of Cell(pcs)	4*9
Size of Module(mm)	770*668*35
Front Glass Thikness(mm)	3.2
Surface Maximum Load Capacity	2400-5400Pa
Allowable Hail Load	23m/s ,7.53g
Weight Per Piece(KG)	6.1
Bypass Diode Rating(A)	10
Frame(Material Corners,etc.)	35#
Temperature Range	-40°C to +85°C
FF (%)	70-76%
Standard Test Conditions	AM1.5 1000W/m ² 25°C

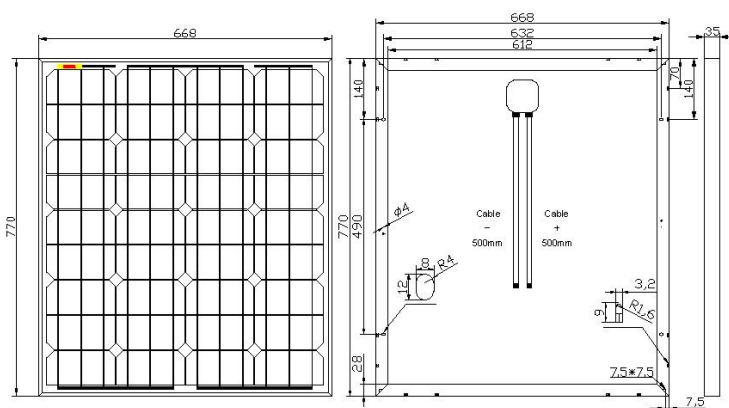
Packing

Packing	Wooden Box
Pieces per container	30pcs/Pallets

Project Picture



Engineering Drawings



©2016 NINGBO RENELED NEW ENERGY CO.,LTD. All rights reserved.

Specifications included in this datasheet are subject to change without notice.



NINGBO RENELED NEW ENERGY CO.,LTD.

ADD: No. 35 Jintong Road, Binhai Industrial Park,

Xiangshan County, Ningbo, 315700, China

TEL: 0086 (0)574 65893072

FAX: 0086 (0)574 65786317